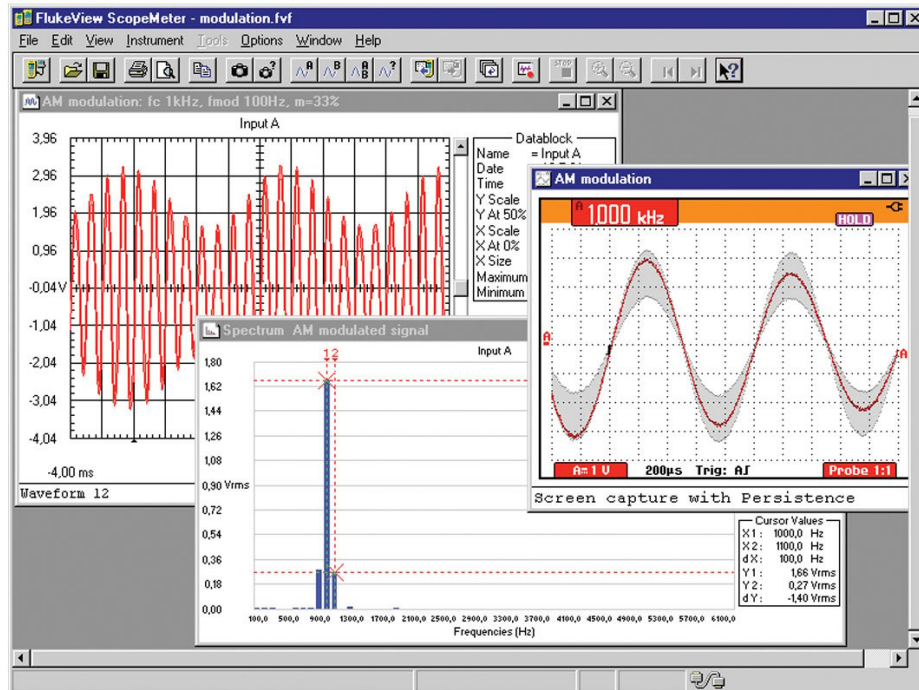


## SW90W FlukeView 示波器軟體



### 主要功能

- For ScopeMeter(R) 190 Series II and 120 Series
- Windows XP/Vista/Windows 7/Windows 10
- Requires one free RS-232 port (COM port) or a free USB-Port
- Requires optional PM9080 RS-232 Adapter/Cable or an optional OC4USB-cable (190C Series, 120 Series)

Note: 190 Series II comes with USB-port and USB-cable included. For 190 Series II no additional hardware is required.

### 產品概述: SW90W FlukeView 示波器軟體

FlukeView-1 software adds PC power to your Fluke ScopeMeter test tool

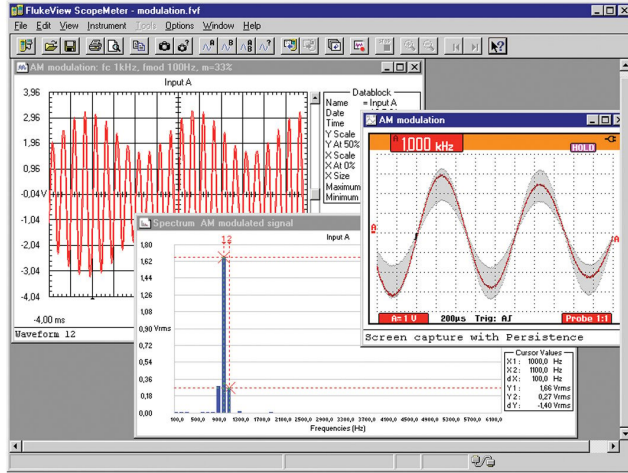
FlukeView-1 ScopeMeter software helps you get more out of your [ScopeMeter 190 Series II Test Tool](#) by:

- Documenting: Transfer screens, waveforms, and measurement data from the ScopeMeter Test Tool to your PC for printing, or to import data to other programs.
- Archiving: Store and retrieve waveforms with text annotations and create your own library for easy reference and comparison.
- Analysis: Gather valuable measurement data and enable cursor measurement to reveal relationship and

conditions.

Extended recording of up to four user-selected measurements help you monitor and analyze slow moving signals and related events. Upload waveforms to the PC and use cursors for detailed measurements. Perform waveform analysis, including analyzing harmonics.

機型



Fluke SW90W

Fluke. 保持您的世界運作不懈。

Fluke Corporation  
PO Box 9090, Everett, WA 98206 U.S.A.

更多資訊  
U.S.A. (800) 443-5853  
Europe/M-East/Africa  
+31 (0)40 267 5100  
Canada (800)-36-FLUKE  
其他 +1 (425) 446-5500  
[www.fluke.com/zh-tw](http://www.fluke.com/zh-tw)

©2025 Fluke Corporation. Specifications subject to  
change without notice.  
04/2025

Modification of this document is not permitted  
without written permission from Fluke Corporation.