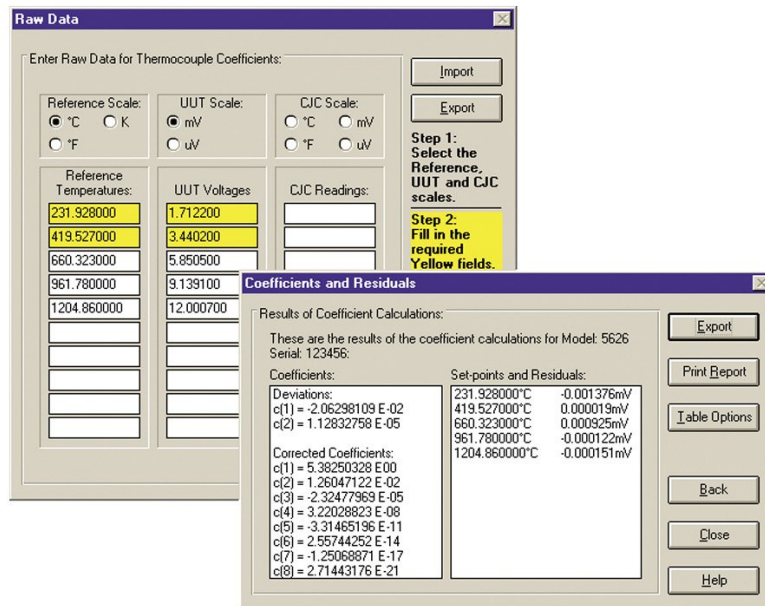


# 9933 TableWare v3 - Temperature Calibration Software



## 主要功能

- Uses manually entered data for calculations provided by MET/TEMP II.
- Compatible with Windows 7, 8, and 10 operating systems.

## 產品概述: 9933 TableWare v3 - Temperature Calibration Software

TableWare calculates coefficients for RTDs, thermistors and thermocouples. It uses ITS-90, IPTS-68, Callendar-Van Dusen and polynomial equations. TableWare also generates temperature vs. resistance, temperature vs. ratio and temperature vs. EMF tables.

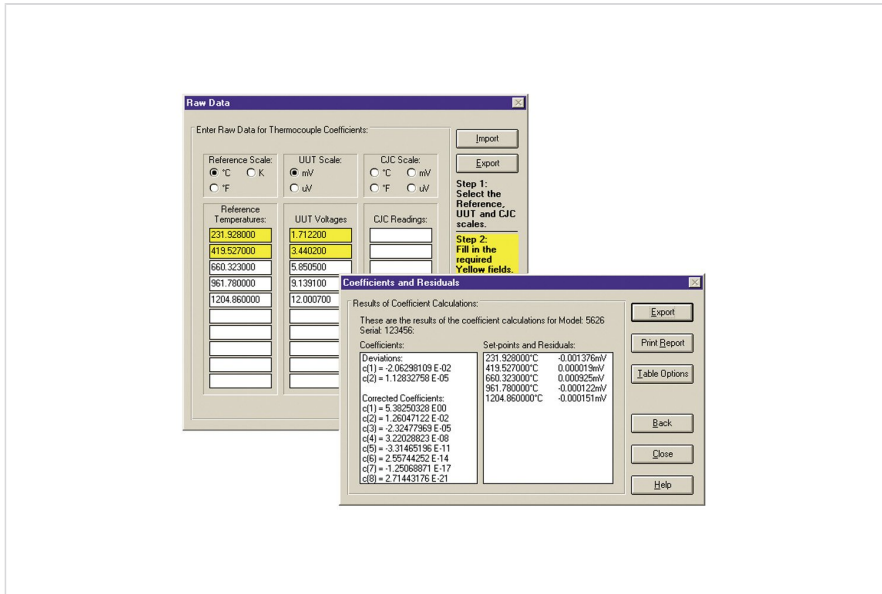
Simply enter or import the raw resistance or voltage data from your calibrations. TableWare generates coefficients, calculates residual values and generates useful tables.

Tables and coefficients can be exported to a text file for analysis in other software packages.

Also, TableWare allows you to generate tables from coefficients that can be entered manually. No raw data is required!

TableWare v3.0 is compatible with Microsoft Windows 7, 8, and 10 operating systems.

機型



9933-V3

TableWare Coefficient Calculation and Table Generation Software

Fluke. 保持您的世界運作不懈。

Fluke Corporation  
PO Box 9090, Everett, WA 98206 U.S.A.

更多資訊  
U.S.A. (800) 443-5853  
Europe/M-East/Africa  
+31 (0)40 267 5100  
Canada (800)-36-FLUKE  
其他 +1 (425) 446-5500  
[www.fluke.com/zh-tw](http://www.fluke.com/zh-tw)

©2025 Fluke Corporation. Specifications subject to  
change without notice.  
04/2025

Modification of this document is not permitted  
without written permission from Fluke Corporation.