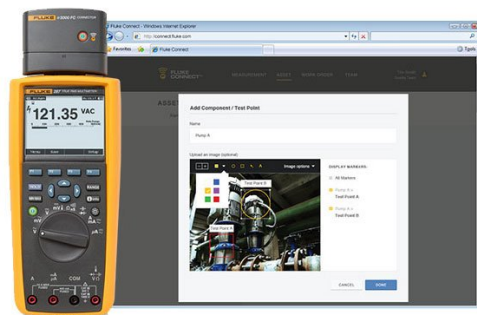
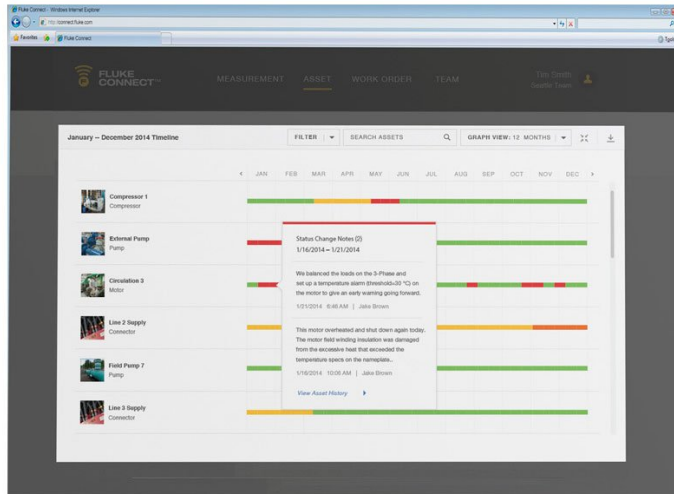


# Fluke 287 FlukeView® Forms Combo Kit





## 主要功能

Equipped with new functionality

- NEW – Now compatible with Fluke Connect mobile app and all Fluke FC enabled test tools with optional ir3000 FC infrared connector (sold separately).
- NEW – Let your team see what you see in an instant with ShareLive™ video call (requires Fluke Connect mobile app and ir3000 FC wireless connector).
- TrendCapture quickly graphically displays logged data session to quickly determine whether anomalies may have occurred.
- Zoom on trend provides unprecedented ability to view and analyze TrendCapture data; zoom in up to 14 times.
- Selectable AC filter (smoothing mode) helps display a steadier reading when the input signal is changing rapidly or noisy.
- Adjustable recording and auto hold thresholds, specify a percentage change in the readings that begins a new event.
- Large 50,000 count, 1/4 VGA display with white backlight. Multiple sets of measurement information can be simultaneously displayed at the same time.
- Logging function with expanded memory for unattended monitoring of signals over time. Using on-board TrendCapture users can graphically review logged readings without needing a PC. Store up to 15,000 recorded events.
- On board help screens for measurement functions.
- Saved measurements allow you to name and recall measurements made in the field.
- Multi-lingual interface.
- Multiple logging sessions possible without download.
- 0.025% basic DC accuracy.
- 100 kHz ac bandwidth.
- Real time clock for automatic time stamping of saved readings.
- True RMS AC voltage and current for accurate measurements on complex signals or non-linear loads. AC bandwidth specified to 100 kHz.
- Measure up to 10 A (20 A for 30 seconds).
- 100 mF capacitance range.
- Temperature function.
- Relative mode to remove test lead resistance from low ohms or capacitance measurements.
- Peak capture to record transients as fast as 250  $\mu$ s.
- Premium test leads and alligator clips included.
- Amp jack plugs included.
- FlukeView forms enable you to document, store and analyze individual readings or a series of measurements, then convert them into professional-looking documents.
- Optional magnetic hanger allows you to hang the meter for easy viewing while freeing your hands to focus on the job.
- Limited lifetime warranty.

## 產品概述: Fluke 287 FlukeView® Forms Combo Kit

節省當您購買Fluke287帶TrendCapture的記錄萬用表和FlukeView®Forms軟體

最大限度地提高生產力合併Fluke 287和FlukeView Forms軟體二合一套件。Designed for today's professionals involved in the R & D, maintenance, manufacture and design of electronic circuits or systems. With built-in data logger and

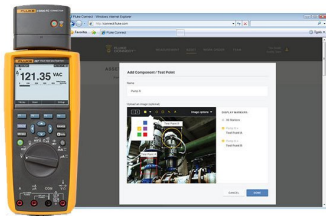
TrendCapture capability, the 287 helps you track down elusive, intermittent problems or monitor equipment with any of its functions. FlukeView Forms enabling you to document store and analyze individual readings or series of measurements, overlay logged data to find cause and effect relationships, or turn your data into meaningful graphs and tables for a professional report. 287/FVF二合一套件為您提供了一個實用與實惠的方法來記錄電路設計性能。

## 規格: Fluke 287 FlukeView® Forms Combo Kit

Specifications		
Function		
DC volts	Range / resolution	50.000 mV, 500.00 mV, 5.0000 V, 50.000 V, 500.00 V, 1000.0 V
	Basic accuracy	0.025%
AC volts	Range / resolution	50.000 mV, 500.00 mV, 5.0000 V, 50.000 V, 500.00 V, 1000.0 V
	Basic accuracy	0.4% (True-RMS)
DC current	Range / resolution	500.00 μA, 5000.0 μA, 50.000 mA, 400.00 mA, 5.0000 A, 10.000 A
	Basic accuracy	0.05%
AC current	Range / resolution	500.00 μA, 5000.0 μA, 50.000 mA, 400.00 mA, 5.0000 A, 10.000 A
	Basic accuracy	0.6% (True-RMS)
Temperature (excluding probe)	Range / resolution	-200.0°C to 1350.0°C (-328.0°F to 2462.0°F)
	Basic accuracy	1.0%
Resistance	Range / resolution	500.00 Ω, 5.0000 kΩ, 50.000 kΩ, 500.00 kΩ, 5.0000 MΩ, 50.00 MΩ, 500.0 MΩ
	Basic accuracy	0.05%
Capacitance	Range / resolution	1.000 n, 10.00 nF, 100.0 nF, 1.000 μF, 10.00 μF, 100.0 μF, 1000 μF, 10.00 mF, 100 mF
	Basic accuracy	1.0%
Frequency	Range / resolution	99.999 Hz, 999.99 Hz, 9.9999 kHz, 99.999 kHz, 999.99 kHz
	Basic accuracy	0.005%
Connectivity	Optional infrared connector via Fluke ir3000 FC	
General Specifications		
Maximum voltage between any terminal and earth ground	1000 V	
Baery type	6 AA alkaline baeries, NEDA 15A IECLR6	
Baery life	100 hours minimum, 200 hours in logging mode	
Temperature	Operating	-20°C to 55°C
	Storage	-40°C to 60°C

Relative humidity	0 to 90% (0 to 37°C), 0 to 65% (37°C to 45°C), 0 to 45% (45°C to 55°C)
Electromagnetic compatibility	EMC EN61326-1
Vibration	Random vibration per MIL-PRF-28800F Class 2
Shock	1 meter drop per IEC/EN 61010-1 3rd Edition
Size (H x W x L)	22.2 x 10.2 x 6 cm (8.75 x 4.03 x 2.38 in)
Weight	870.9 g (28 oz)
Multiple on screen displays	Yes
True-RMS AC bandwidth	100 kHz
dBV/dBm	Yes
DC mV resolution	1 $\mu$ V
Megohm range	Up to 500 M $\Omega$
Conductance	50.00 nS
Continuity beeper	Yes
Baery/fuse access	Yes/Yes
Elapse time clock	Yes
Time of day clock	Yes
Min-max-avg	Yes
Peak	250 $\mu$ s
Duty cycle	0.01% to 99.99%
Pulse width	0.025 ms, 0.25 ms, 2.5 ms, 1250.0 ms
Hold	Yes
Isolated optical interface	Yes
Auto/touch hold	Yes
Reading memory	Yes
Log to PC	Yes
Interval/event logging	Yes
Logging memory	Up to 10,000 readings
Wireless connectivity (optional)	Yes

## 機型



### Fluke 287 Kit

#### Fluke 287 FlukeView® Forms Combo Kit

##### Includes:

- Fluke 287 Multimeter
- FlukeView® Forms Software with cable
- 80BK-A Thermocouple Probe
- CAT III 1000 V 10 A Modular Test Leads (red, black)
- CAT II 1000 V 10 A Modular Test Probes (red, black) and CAT III rated caps
- CAT III 1000 V 10 A Alligator Clips (red, black)
- Magnetic hanging strap
- TLK287 Electronic Test Lead Set
- C280 Soft Case
- Amp Jack Plug Set

Requires Fluke ir3000 FC Infrared Connector for Fluke Connect communication (not included in FVF Kit)

Fluke. 保持您的世界運作不懈。

Fluke Corporation  
PO Box 9090, Everett, WA 98206 U.S.A.

更多資訊  
U.S.A. (800) 443-5853  
Europe/M-East/Africa  
+31 (0)40 267 5100  
Canada (800)-36-FLUKE  
其他 +1 (425) 446-5500  
[www.fluke.com/zh-tw](http://www.fluke.com/zh-tw)

©2025 Fluke Corporation. Specifications subject to  
change without notice.  
04/2025

Modification of this document is not permitted  
without written permission from Fluke Corporation.