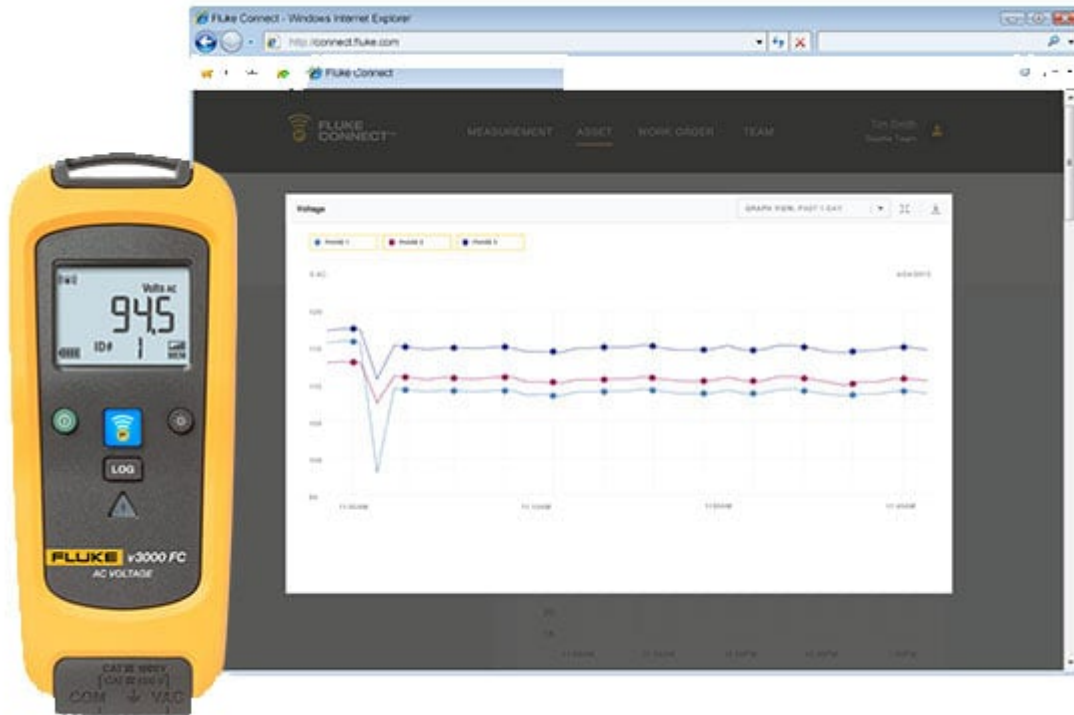
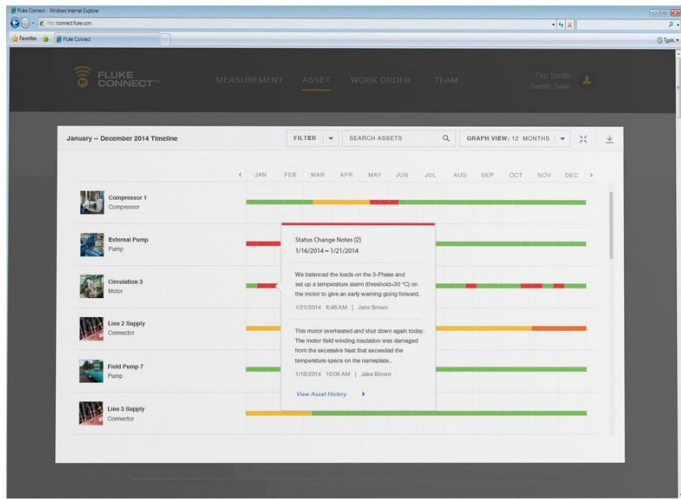




Thông số kỹ thuật

Fluke v3000 FC Wireless AC Voltage Module





Tính năng chính

The Fluke v3000 FC Wireless AC Voltage Module is fully functional AC voltage meter that wirelessly relays AC voltage measurements to other Fluke Connect® enabled master units, listed below:

- Fluke 3000 FC DMM
- Fluke Ti200/300/400 Infrared Camera
- PC via optional pc3000 FC Adapter
- Fluke Connect Mobile app

With the Fluke v3000 FC Wireless AC Voltage Module you can:

- Measure up to 1000 V True-RMS AC
- Use as a standalone meter or as part of the system
- Use the logging function for recording and saving up to 65,000 readings

Tổng quan sản phẩm: Fluke v3000 FC Wireless AC Voltage Module

See it. Save it. Share it.

All the facts, right in the field. The Fluke v3000 FC Wireless AC Voltage Module is one member of a family of wireless test tools that let you share test data using the Fluke Connect® app with ShareLive™ video call.

Fluke Connect Wireless Test Tools put tools, not your body, near live electrical panels. It's simple. Connect the v3000 FC wireless AC voltage module, or any of the other Fluke Connect remote modules, and read the results on the Fluke Connect Wireless Multimeter or a portable PC from a safe distance.

Better still, the Fluke Connect test tools can send measurement data to your smartphone, so you can save and share measurements from the field with your team anytime, from anywhere.

Don't get bogged down while isolating intermittent electrical faults

Timing is everything when trying to find an intermittent problem and the hard part is, it doesn't always show up when you have your meter connected. We've solved that problem with Fluke Connect – leave your remote modules connected to log measurements and walk away to address other issues. You can then download the data for further analysis.

Work safely near electrical panels while wearing less PPE

Personal protective equipment (PPE) can save your life, but it's bulky, hot and hard to work in. With Fluke Connect, there's no need to work in front of live open panels or moving/hazardous machinery.

Picture having the ability to access live readings without being exposed to the live panel. It's easy. Just de-energize the cabinet, open the panel while wearing PPE and connect one or more v3000 FC modules. Close the cabinet, re-energize and let the Fluke Connect system work, reducing the risk of arc flash by separating yourself from hazardous measurement situations.

Testing 3-phase is now faster and cheaper

When your cabinet is de-energized, attach a Fluke Connect voltage module to each phase. Close, re-energize and start taking readings. What used to take hours and use costly equipment can be done in minutes with an affordable Fluke Connect wireless system.

Take 3-phase measurements in 1/3 the time. Add your laptop and go from logging to analysis and diagnosis.

You can solve problems faster by seeing live measurements from multiple test points on a single screen. Using v3000 FC AC voltage modules, you can:

- Take 3-phase measurements in 1/3 the time of previous methods.
- Send data to your laptop and go from logging to analysis and diagnosis.
- Record over time to monitor circuit load changes for an hour, a shift or a week.
- Use the Fluke Connect wireless USB adapter to collect logged data from remote modules by walking past a working module and downloading logged data.
- Perform for analysis with your PC and share the results using Fluke Cloud™ storage and ShareLive™ video call. View data or graphs to get input from team members.

Thông số kỹ thuật: Fluke v3000 FC Wireless AC Voltage Module

Specifications		
Range ¹ / Resolution	6.000 V / 0.001 V 60.00 V / 0.01 V 600.0 V / 0.1 V 1000 V / 1 V	
Accuracy ^{2,3,4}	45 Hz to 500 Hz	1.0% + 3
	500 Hz to 1 kHz	2.0% + 3
<p>Accuracy is specified as \pm ([% of reading] + [number of least significant digits]). All ranges are autoranging. Accuracy is specified from 5% to 100% of the range obtained by autoranging, from 18°C to 28°C.</p> <p>1. All AC voltage ranges are specified from 1% of range to 100% of range.</p> <p>2. Crest factor of ≤ 3 at full scale up to 500 V, decreasing linearly to crest factor < 1.5 at 1000 V.</p> <p>3. For non-sinusoidal waveforms, add \pm (2% of reading + 2% full scale) typical, for crest factor up to 3.</p> <p>4. Do not exceed 107 V-Hz.</p>		
General Specifications		
LCD w/backlight	3½ digits, 6000 counts, updates 4/sec	
Baery type	2 AA, NEDA 15 A, IEC LR6	
Baery life	400 Hours	
Memory	Record up to 65000 readings	
RF communications	2.4 GHZ ISM Band	
RF communication range	Open air, unobstructed	Up to 20 m
	Obstructed, sheetrock wall	Up to 6.5 m
	Obstructed, concrete wall or steel electrical enclosure	Up to 3.5 m
Operating temperature	-10°C to +50°C	
Storage temperature	-40°C to +60°C	
Temperature coefficient	0.1 X (specified accuracy)/°C (< 18°C or > 28°C)	
Operating humidity	90% at 35°C, 45% at 40°C, 45% at 50°C	
Altitude	Operating	2,000 m
	Storage	12,000 m
EMC	EN 61326-1:2006	

Safety compliance	ANSI/ISA 61010-1 / (82.02.01)	3rd edition
	CAN / CSA-C22.2 No 61010-1-12	3rd edition
	UL 61010-1	3rd edition
	IEC/EN 61010-1	2010
Safety rating	CAT IV 600 V, CAT III 1000 V	
Certifications	CSA, CE, FCC: T68-FBLE IC: 6627A-FBLE	
Ingress Protection (IP) rating	IP42	
Pollution Degree	2	
Size (HxWxD)	16.5 x 6.35 x 1.4 cm (6.5 x 2.5 x 1.4 in)	
Weight	.22 kg (8 oz)	
Warranty	Three years	
Note: Not compatible with Fluke CNX test tools		

Model



FLK-v3000 FC

Fluke v3000 FC Wireless AC Voltage Module

Includes:

- Fluke v3000 Voltage Module
- TL224 Test Leads
- AC285 Alligator Clips
- Magnetic hanging strap



Đơn giản hóa bảo trì dự phòng. Chấm dứt tình trạng kiểm tra lại.

Tiết kiệm thời gian và cải thiện độ tin cậy của dữ liệu bảo trì bằng cách đồng bộ các phép đo qua mạng không dây với hệ thống Fluke Connect.

- Loại bỏ lỗi nhập dữ liệu bằng cách lưu kết quả đo trực tiếp từ thiết bị và kết hợp chúng với lệnh sản xuất, báo cáo hoặc hồ sơ thiết bị.
- Tối đa thời gian hoạt động và ra các quyết định bảo trì một cách chính xác với dữ liệu đáng tin cậy và có thể theo dõi được.
- Bỏ bảng ghi tạm, sổ ghi chép và nhiều bảng tính và chuyển sang sử dụng truyền phép đo trực tiếp qua mạng không dây.
- Truy cập các phép đo cơ sở, lịch sử và hiện tại theo từng thiết bị.
- Chia sẻ dữ liệu đo thông qua các cuộc gọi video và email ShareLive™

Tìm hiểu thêm tại flukeconnect.com



Tất cả nhãn hiệu thương mại thuộc về các chủ sở hữu tương ứng. Cần có WiFi hoặc di động để chia sẻ dữ liệu. Không bán kèm điện thoại thông minh, dịch vụ không dây và gói dữ liệu. Miễn phí 5GB dung lượng lưu trữ đầu tiên..

Không bán kèm điện thoại thông minh, dịch vụ không dây và gói dữ liệu. Fluke Connect chỉ bán ở một số quốc gia.