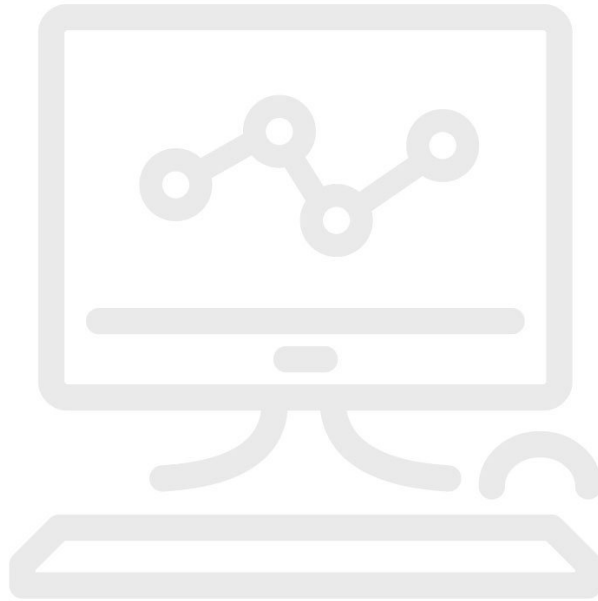


MET/CAL® Installation and Training Service



Belangrijkste kenmerken

- On-Site Integration and Training: Simplifies complex calibration installations.
- Service: A specialist sets up and runs hardware and software, also provides training. Available in US and Canada.
- Three-and-a-half or Five-day assistance may include: database migration and configuration, MET/CAL setup, report installation, and training.

Productoverzicht: MET/CAL® Installation and Training Service

Automated calibration installations are becoming more complex. Often it is a daunting challenge for the cal lab manager to get the hardware and software operating as expected.

Fluke Calibration's On-Site System Integration and Training Option will solve that problem by giving you the opportunity to purchase the services of a qualified systems specialist to set up the hardware and software and get it running, and provide training and transition services. The service is available in the US and Canada only. A Fluke Calibration MET/CAL® specialist will come to your site and in five days provide the following services:

- Database migration
- Database configuration
- Install MET/CAL clients and load existing procedures
- Server and client setup
- Install basic reports

- Provide training with time remaining

Modellen



MS-Onsite

MET/CAL Plus Installation and Training Service

Fluke. *Keeping your world up and running.®*

Fluke Belgium N.V.
Kortrijksesteenweg 1095
B9051 Gent
Belgium
Tel: +32 2402 2100
E-mail: cs.be@fluke.com
www.fluke.be

©2025 Fluke Corporation. Alle rechten
voorbehouden.

Wijzigingen zonder voorafgaande kennisgeving
voorbehouden.

03/2025

**Wijziging van dit document is niet toegestaan
zonder schriftelijke toestemming van Fluke
Corporation.**