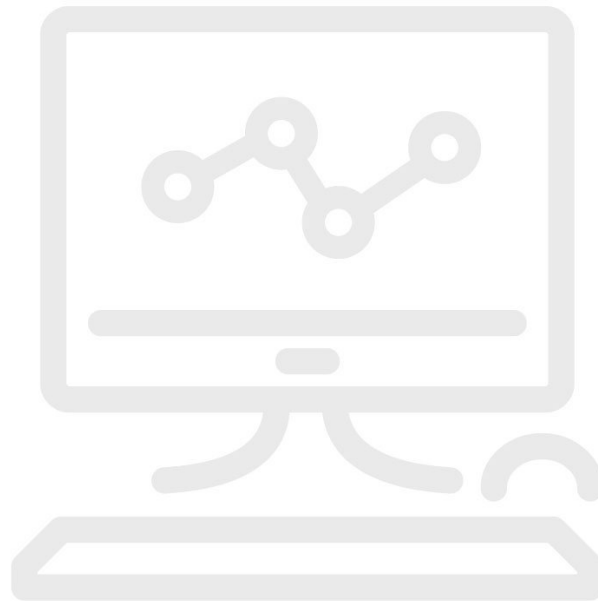


Technische gegevens

## Database Migration Assistance



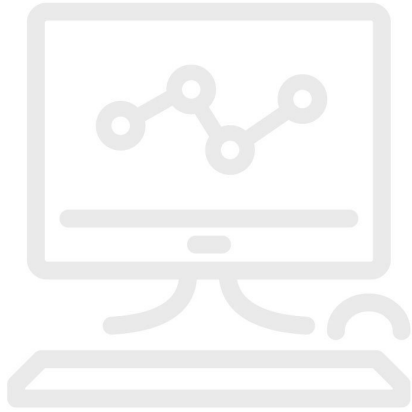
### Productoverzicht: Database Migration Assistance

Automated calibration installations are becoming more complex. Often it is a daunting challenge for the cal lab manager to get the hardware and software operating as expected. Fluke can help you migrate calibration data from your old database to a new MET/CAL® Plus database. Here is how this service works:

- You ship your “legacy” data, as a text file in delimited format, to the Fluke MET/SUPPORT product support group.
- You tell us what fields are represented in the legacy data so we know how to correlate them into MET/BASE.
- We will perform the data transfer and send you a populated MET/BASE file.

Database migrations do not, by nature, leave you with a perfect copy of the old data in the new database. Some data may be lost due to improper data entry methods or poor database structure/integrity.

## Modellen



### **MS-MIGRATE**

Database Migration Assistance

---



**Fluke.** *Keeping your world up and running.®*

**Fluke Belgium N.V.**  
Kortrijksesteenweg 1095  
B9051 Gent  
Belgium  
Tel: +32 2402 2100  
E-mail: [cs.be@fluke.com](mailto:cs.be@fluke.com)  
[www.fluke.be](http://www.fluke.be)

©2025 Fluke Corporation. Alle rechten  
voorbehouden.  
Wijzigingen zonder voorafgaande kennisgeving  
voorbehouden.  
03/2025

**Wijziging van dit document is niet toegestaan  
zonder schriftelijke toestemming van Fluke  
Corporation.**