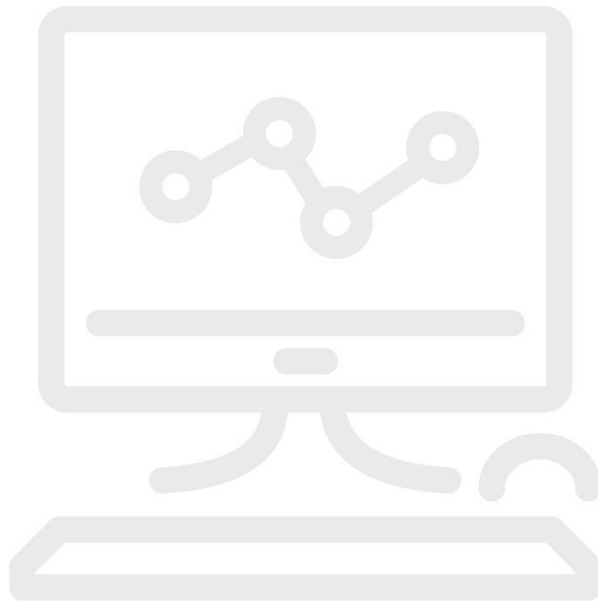


Administrator Password Reconstruction Service



Productoverzicht: Administrator Password Reconstruction Service

Activities for system administrators in MET/CAL®, MET/TEAM®, 5500/CAL or MET/TRACK® systems are limited to system-related activities. These include adding, changing or deleting users, setting access levels and so on. Performing these activities is crucial to the operation of the system. Without a system administrator, a customer is essentially “locked out” of these important functions.

From time to time, customers forget or lose the system administrator password, which can result in limited to no access to their calibration system.

MS-PSWD is a service that customers in this predicament can purchase to get their systems password reestablished. The database is sent to the Fluke MET/SUPPORT group (via FTP or other means), and we reconstruct a system administrator password using special tools in the support group.

This service may be purchased separately. It also is included in the [MET/SUPPORT Gold](#) Priority Support program.

Modellen



MS-PSWD

Administrator Password Reconstruction Service

Fluke. *Keeping your world up and running.®*

Fluke Belgium N.V.
Kortrijksesteenweg 1095
B9051 Gent
Belgium
Tel: +32 2402 2100
E-mail: cs.be@fluke.com
www.fluke.be

©2025 Fluke Corporation. Alle rechten
voorbehouden.

Wijzigingen zonder voorafgaande kennisgeving
voorbehouden.

04/2025

**Wijziging van dit document is niet toegestaan
zonder schriftelijke toestemming van Fluke
Corporation.**