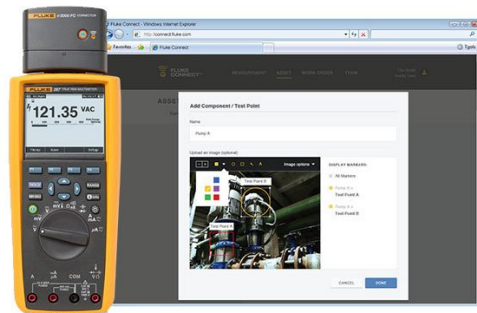
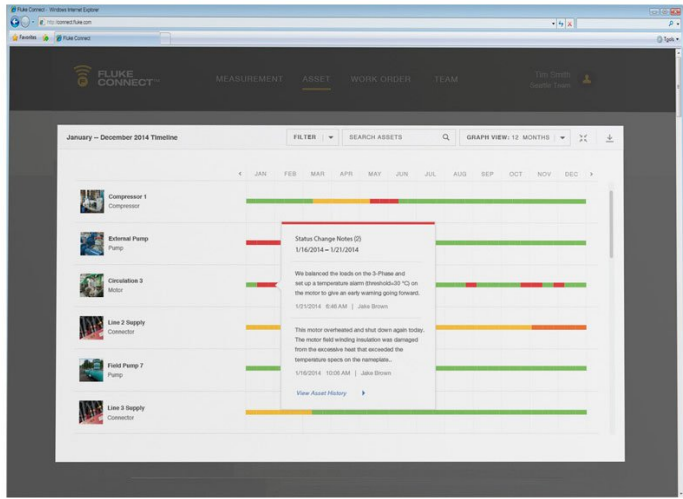


기술 자료

Fluke 287 FlukeView Forms 콤보 키트





주요 기능

Equipped with new functionality

- NEW – Now compatible with Fluke Connect mobile app and all Fluke FC enabled test tools with optional ir3000 FC infrared connector (sold separately).
- NEW – Let your team see what you see in an instant with ShareLive™ video call (requires Fluke Connect mobile app and ir3000 FC wireless connector).
- TrendCapture quickly graphically displays logged data session to quickly determine whether anomalies may have occurred.
- Zoom on trend provides unprecedented ability to view and analyze TrendCapture data; zoom in up to 14 times.
- Selectable AC filter (smoothing mode) helps display a steadier reading when the input signal is changing rapidly or noisy.
- Adjustable recording and auto hold thresholds, specify a percentage change in the readings that begins a new event.
- Large 50,000 count, 1/4 VGA display with white backlight. Multiple sets of measurement information can be simultaneously displayed at the same time.
- Logging function with expanded memory for unattended monitoring of signals over time. Using on-board TrendCapture users can graphically review logged readings without needing a PC. Store up to 15,000 recorded events.
- On board help screens for measurement functions.
- Saved measurements allow you to name and recall measurements made in the field.
- Multi-lingual interface.
- Multiple logging sessions possible without download.
- 0.025% basic DC accuracy.
- 100 kHz ac bandwidth.
- Real time clock for automatic time stamping of saved readings.
- True RMS AC voltage and current for accurate measurements on complex signals or non-linear loads. AC bandwidth specified to 100 kHz.
- Measure up to 10 A (20 A for 30 seconds).
- 100 mF capacitance range.
- Temperature function.
- Relative mode to remove test lead resistance from low ohms or capacitance measurements.
- Peak capture to record transients as fast as 250 μ s.
- Premium test leads and alligator clips included.
- Amp jack plugs included.
- FlukeView forms enable you to document, store and analyze individual readings or a series of measurements, then convert them into professional-looking documents.
- Optional magnetic hanger allows you to hang the meter for easy viewing while freeing your hands to focus on the job.
- Limited lifetime warranty.

제품 개요: Fluke 287 FlukeView Forms 콤보 키트

TrendCapture + FlukeView® Forms 소프트웨어가 함께 포함된 Fluke 287 로깅 멀티미터를 구입하면 비용이 절감됩니다.

Fluke 287과 FlukeView Forms가 결합된 콤보 키트로 생산성을 극대화해 보십시오. 오늘날 전자 회로 또는 시스템의 R&D,

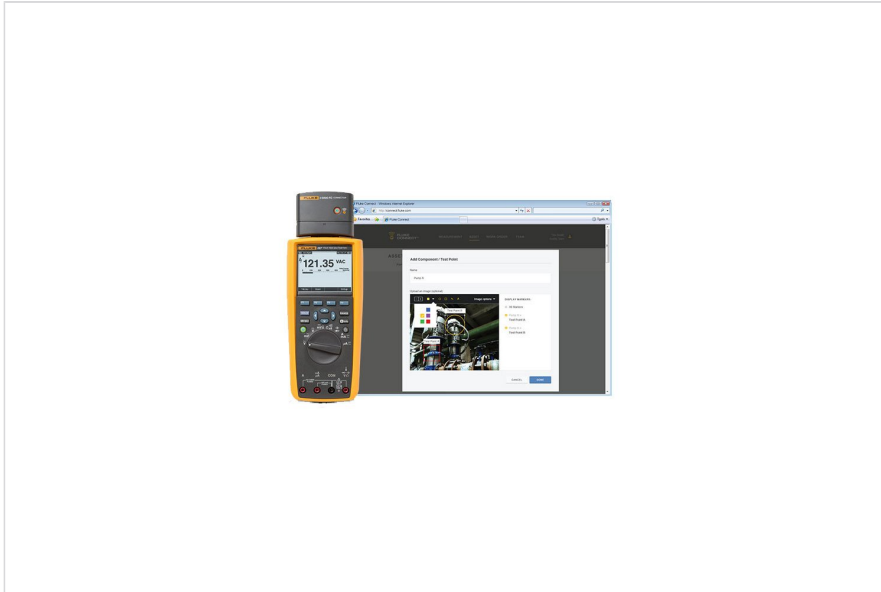
유지보수, 제조 및 설계 분야에 종사하는 전문가들을 위해 설계되었습니다. 데이터 로거 및 TrendCapture 기능이 내장된 287을 사용하면 식별하기 어려운 간헐적인 문제를 추적하거나 장비를 모니터링할 수 있습니다. 개별 판독값 또는 일련의 측정값을 저장하고 분석할 수 있는 FlukeView Forms는 로깅된 데이터를 오버레이하여 인과 관계를 찾거나, 전문적인 보고서를 작성할 수 있도록 데이터를 의미 있는 그래프와 표로 변환합니다. 287/FVF 콤보 키트는 회로 설계 성능을 문서화할 수 있는 실용적이고 경제적인 접근 방법을 제공합니다.

제품 사양: Fluke 287 FlukeView Forms 콤보 키트

Specifications		
Function		
DC volts	Range / resolution	50.000 mV, 500.00 mV, 5.0000 V, 50.000 V, 500.00 V, 1000.0 V
	Basic accuracy	0.025%
AC volts	Range / resolution	50.000 mV, 500.00 mV, 5.0000 V, 50.000 V, 500.00 V, 1000.0 V
	Basic accuracy	0.4% (True-RMS)
DC current	Range / resolution	500.00 μ A, 5000.0 μ A, 50.000 mA, 400.00 mA, 5.0000 A, 10.000 A
	Basic accuracy	0.05%
AC current	Range / resolution	500.00 μ A, 5000.0 μ A, 50.000 mA, 400.00 mA, 5.0000 A, 10.000 A
	Basic accuracy	0.6% (True-RMS)
Temperature (excluding probe)	Range / resolution	-200.0°C to 1350.0°C (-328.0°F to 2462.0°F)
	Basic accuracy	1.0%
Resistance	Range / resolution	500.00 Ω , 5.0000 k Ω , 50.000 k Ω , 500.00 k Ω , 5.0000 M Ω , 50.00 M Ω , 500.0 M Ω
	Basic accuracy	0.05%
Capacitance	Range / resolution	1.000 n, 10.00 nF, 100.0 nF, 1.000 μ F, 10.00 μ F, 100.0 μ F, 1000 μ F, 10.00 mF, 100 mF
	Basic accuracy	1.0%
Frequency	Range / resolution	99.999 Hz, 999.99 Hz, 9.9999 kHz, 99.999 kHz, 999.99 kHz
	Basic accuracy	0.005%
Connectivity	Optional infrared connector via Fluke ir3000 FC	
General Specifications		
Maximum voltage between any terminal and earth ground	1000 V	
Baery type	6 AA alkaline baeries, NEDA 15A IECLR6	
Baery life	100 hours minimum, 200 hours in logging mode	

Temperature	Operating	-20°C to 55°C
	Storage	-40°C to 60°C
Relative humidity	0 to 90% (0 to 37°C), 0 to 65% (37°C to 45°C), 0 to 45% (45°C to 55°C)	
Electromagnetic compatibility	EMC EN61326-1	
Vibration	Random vibration per MIL-PRF-28800F Class 2	
Shock	1 meter drop per IEC/EN 61010-1 3rd Edition	
Size (H x W x L)	22.2 x 10.2 x 6 cm (8.75 x 4.03 x 2.38 in)	
Weight	870.9 g (28 oz)	
Multiple on screen displays	Yes	
True-RMS AC bandwidth	100 kHz	
dBV/dBm	Yes	
DC mV resolution	1 μ V	
Megohm range	Up to 500 M Ω	
Conductance	50.00 nS	
Continuity beeper	Yes	
Baery/fuse access	Yes/Yes	
Elapse time clock	Yes	
Time of day clock	Yes	
Min-max-avg	Yes	
Peak	250 μ s	
Duty cycle	0.01% to 99.99%	
Pulse width	0.025 ms, 0.25 ms, 2.5 ms, 1250.0 ms	
Hold	Yes	
Isolated optical interface	Yes	
Auto/touch hold	Yes	
Reading memory	Yes	
Log to PC	Yes	
Interval/event logging	Yes	
Logging memory	Up to 10,000 readings	
Wireless connectivity (optional)	Yes	

모델



FLK-287/FVF/IR3000

Fluke 287 FlukeView® Forms 콤보 키트

구성:

- Fluke 287 멀티미터
- FlukeView® Forms 소프트웨어(케이블 포함)
- 80BK-A 열전대 프로브
- CAT III 1000V 10A 모듈식 테스트 리드(빨간색, 검은색)
- CAT II 1000V 10A 모듈식 테스트 리드(빨간색, 검은색) 및 CAT III 등급 캡
- CAT III 1000V 10A 앨리게이터 클립(빨간색, 검은색)
- TLK287 전기 테스트 리드 세트
- TPAK 자석 걸이 키트
- C280 소프트 케이스
- 앰프 잭 플러그 세트

Fluke Connect 통신용 Fluke ir3000 FC 적외선 커넥터 필요(FVF 키트에는 포함되지 않음)



Fluke. Keeping your world up and running.®

Fluke Corporation
PO Box 9090, Everett, WA 98206 U.S.A.

(주)한국플루크Fluke Korea
Tel.02.539.6311
(주)한국플루크 대구지사
Tel.053.382.6311
www.fluke.co.kr

Fluke Korea
서울특별시 강남구 영동대로 517,10층 1002호
(삼성동, 아셈타워)
©2025 Fluke Corporation.
사양은 예고 없이 변경될 수 있습니다.
04/2025

이 문서의 수정은 Fluke Corporation 의 서면 허가 없이는 허용되지 않습니다.