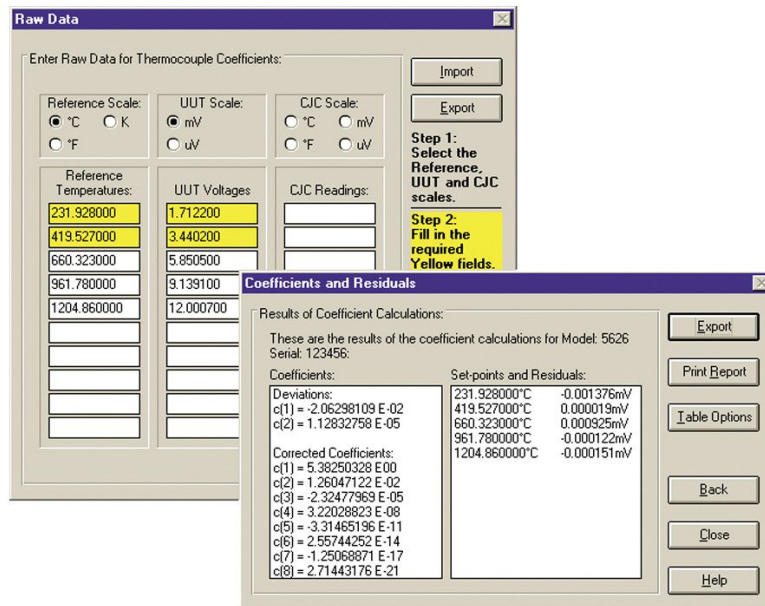


9933 TableWare v3 - Temperature Calibration Software



主な機能

- MET/TEMP II で提供される計算に手動入力されたデータを使用。
- Windows 7、8、10 オペレーティングシステムと互換。

製品概要: 9933 TableWare v3 - Temperature Calibration Software

TableWare calculates coefficients for RTDs, thermistors and thermocouples. It uses ITS-90, IPTS-68, Callendar-Van Dusen and polynomial equations. TableWare also generates temperature vs. resistance, temperature vs. ratio and temperature vs. EMF tables.

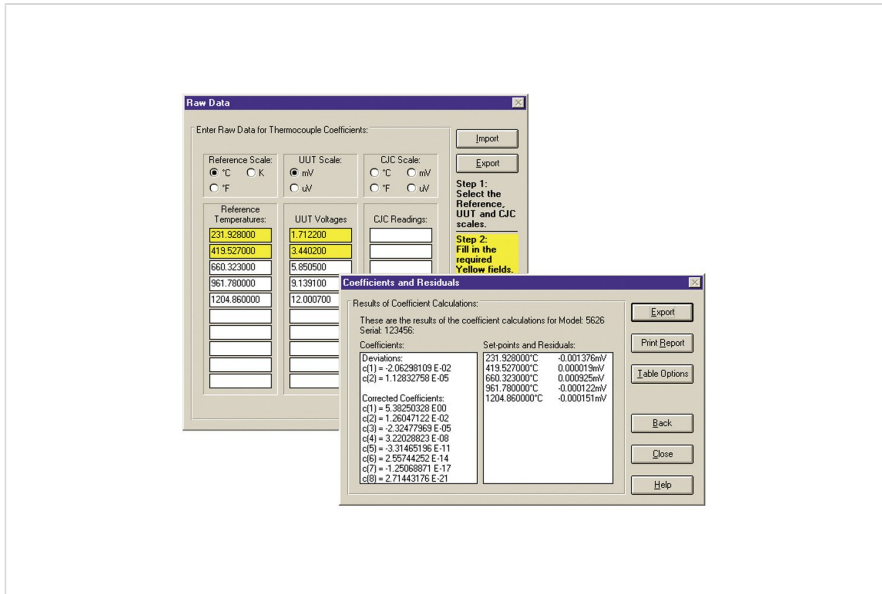
Simply enter or import the raw resistance or voltage data from your calibrations. TableWare generates coefficients, calculates residual values and generates useful tables.

Tables and coefficients can be exported to a text file for analysis in other software packages.

Also, TableWare allows you to generate tables from coefficients that can be entered manually. No raw data is required!

TableWare v3.0 is compatible with Microsoft Windows 7, 8, and 10 operating systems.

モデル



9933-V3

TableWare Coefficient Calculation and Table Generation SoftWare

Fluke. 動き続ける世界を支える

Fluke Corporation
PO Box 9090, Everett, WA 98206 U.S.A./div>
お問い合わせ先: ©2025 Fluke
フルーク Corporation.
特約店営業部 仕様は、予告なく変更され
TEL : 03-6714-3114 る場合があります。
www.fluke.com/jp/ 04/2025

世界で最も信頼されている
ツール