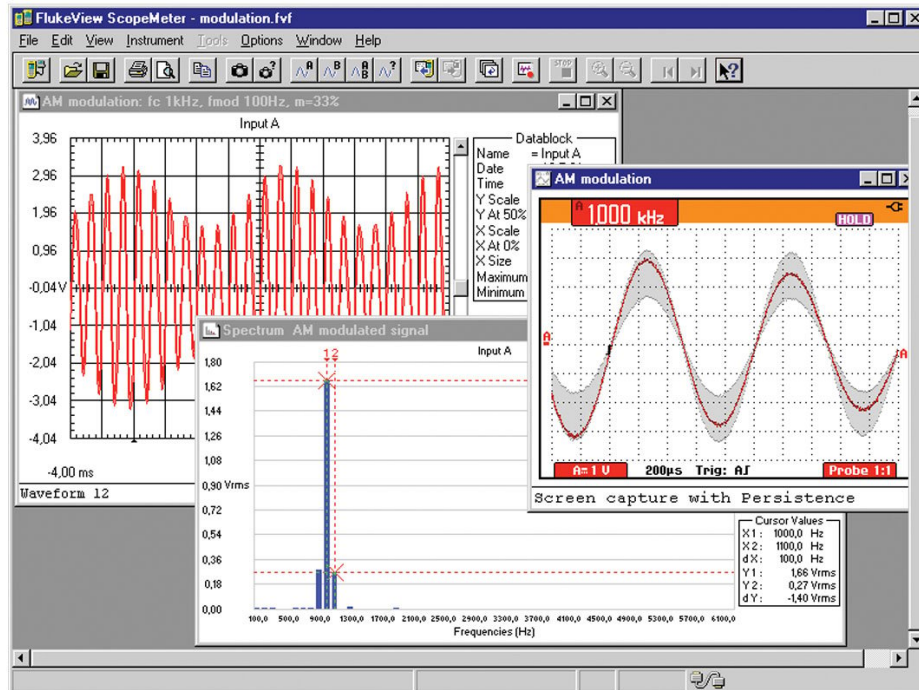


Dati tecnici

Fluke SW90W FlukeView ScopeMeter Software



Caratteristiche principali

- For ScopeMeter(R) 190 Series II and 120 Series
- Windows XP/Vista/Windows 7/Windows 10
- Requires one free RS-232 port (COM port) or a free USB-Port
- Requires optional PM9080 RS-232 Adapter/Cable or an optional OC4USB-cable (190C Series, 120 Series)

Note: 190 Series II comes with USB-port and USB-cable included. For 190 Series II no additional hardware is required.

Descrizione generale del prodotto: Fluke SW90W FlukeView ScopeMeter Software

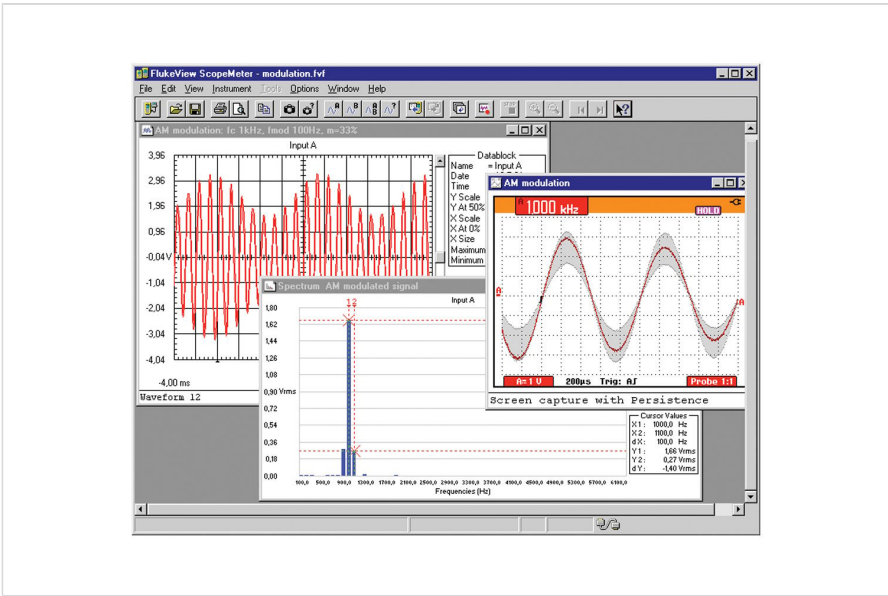
FlukeView-1 software adds PC power to your Fluke ScopeMeter test tool

FlukeView-1 ScopeMeter software helps you get more out of your [ScopeMeter 190 Series II Test Tool](#) by:

- **Documenting:** Transfer screens, waveforms, and measurement data from the ScopeMeter Test Tool to your PC for printing, or to import data to other programs.
- **Archiving:** Store and retrieve waveforms with text annotations and create your own library for easy reference and comparison.
- **Analysis:** Gather valuable measurement data and enable cursor measurement to reveal relationship and conditions.

Extended recording of up to four user-selected measurements help you monitor and analyze slow moving signals and related events. Upload waveforms to the PC and use cursors for detailed measurements. Perform waveform analysis, including analyzing harmonics.

Modelli



Fluke SW90W

Fluke. *Keeping your world up and running.®*

Fluke Italia S.r.l.
Viale Lombardia 218
20861 Brugherio (MB)
Tel: +39 02 3600 2000
E-mail: cs.it@fluke.com
www.fluke.it

©2025 Fluke Corporation. Tutti i diritti riservati.
Dati passibili di modifiche senza preavviso.
04/2025

Non sono ammesse modifiche al presente documento senza autorizzazione scritta da parte di Fluke Corporation.