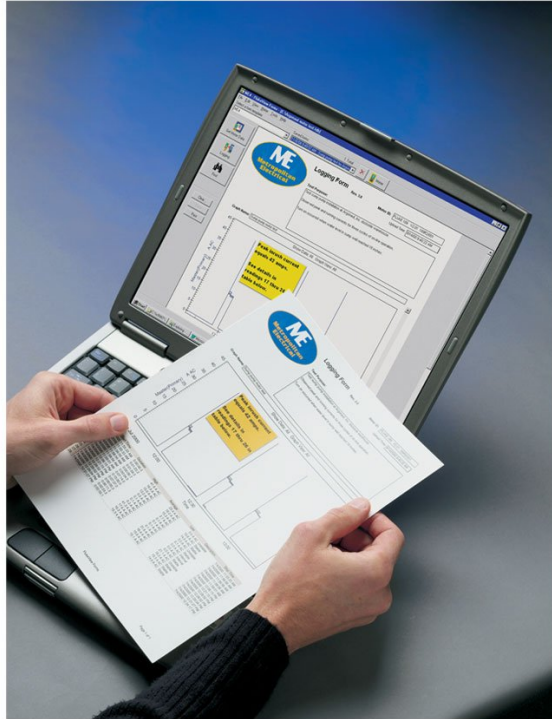


Dati tecnici

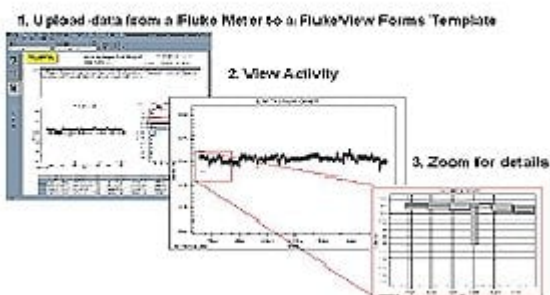
FlukeView Forms Software



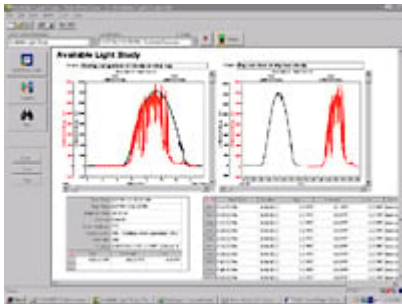
Descrizione generale del prodotto: FlukeView Forms Software

With FlukeView® Forms documenting software, the logging capabilities of handheld test equipment can be used to solve tough problems. You can download the readings from meters into FlukeView® Forms to spot trends and document measurement data.

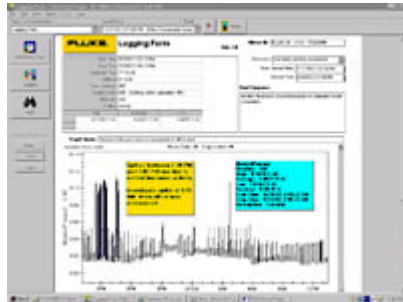
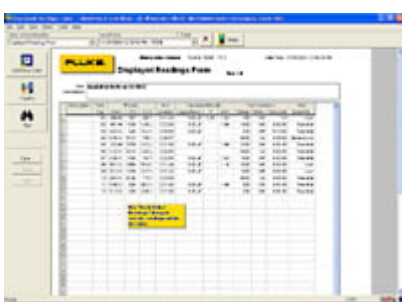
Typical Logging Application



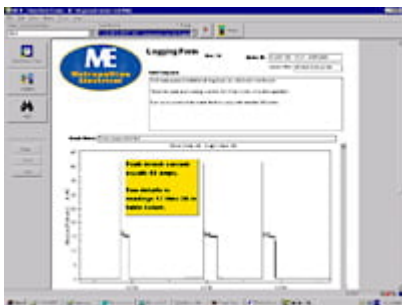
You can instantly review and compare data from up to 6 different meters† on the same document - providing analysis capabilities that a meter alone can't provide.



FlukeView® Forms comes with an array of standard analysis and reporting forms that get you started on displaying your data in tables, graphs or helpful diagrams. You can leave notes on the forms to draw attention to a particular event.



Or use the FlukeView® Forms Plus Designer to customize your reports or add your company logo.



FlukeView® Forms communicates with supported tools fast and easily via an infrared serial interface. The software will automatically recognize your meter and transfer the data without any configuration.

Share or store your data with co-workers or clients – print forms, export to other software programs, or have co-workers and clients download the free FlukeView® Demo/Reader to view and interact with your captured data.

FlukeView Forms Compatibility Chart

FVF Option	Instrument	Cable	Application Level
FVF-UG	Software only upgrade, from FVF Basic to FlukeView Forms plus Designer**	No Cable included	FlukeView Forms plus Designer
FVF-SC2	Fluke 280 Series, 53-II B and 54-II B, 789, 1550B, 1653, 180 Series*	USB / IR	
FVF-SC4	Fluke 8808A, 8845A, 8846A, 45*	USB / Serial	FVF BASIC
FVF-BASIC	Fluke 280 Series, 789, 1550B, 1653, 180 Series*	USB / IR	
FVF-SC5	Software only**	No Cable included	

* Obsolete

** For all instruments listed in table

Using FlukeView® Forms with Multimeters, Thermometers†, MegOhmmeters and ProcessMeter™ tools

For the meters in the table below, you can measure and store hundreds of readings to the meter's internal memory, and then later download the information to FlukeView® Forms. For meters that do not have internal memory, such as the Fluke-187, Fluke-789 and the Fluke-45, you can take interactive readings while connected to your PC with FlukeView® Forms.

FlukeView® Forms also logs events to make analyzing your data easier. This unique method of data recording provides more detailed readings when the input signal changes significantly. The amount of signal change that will trigger an event can be adjusted to fit your specific test situation. The minimum, maximum and average of readings are recorded for each event. Logging sessions can also be configured so that data will be recorded over specific intervals (e.g., every 5 minutes or 30 seconds).

Using FlukeView® Forms with Fluke 1653B Installation tester†

Up to 500 test results can be stored in the Fluke 1653B installation tester. The data stored for each measurement consists of the test function, user selectable test conditions and unique references. The results can be uploaded for preparing professional reports. These reports can easily be customized to suit individual requirements as well as compliance with local regulations. Standard formats as well as localized forms for Germany (ZVEH), Austria (ÖVE) and Switzerland (electrosuisse, gem. NIV) are also available.

† Not supported in FlukeView Forms Basic

Dati tecnici: FlukeView Forms Software

Specifications	
Operating system for FlukeView Forms	Windows 2000, Windows XP, Windows Vista or Windows 7
Minimum PC Hardware	Pentium class or better microprocessor 32 MB RAM 70 MB hard disk space (100 MB to install) Serial or USB port

Administrator Privileges required to install software on Windows 2000, XP, or Windows Vista

Mechanical & General Specifications	
Size	203 x 100 x 50 mm
Weight	545 g

Modelli



FVF-SC2

FlukeView Forms Software with cable

- CD for FlukeView Forms
- Plastic Infrared Adapter (aids meter/PC connection)
- PC to meter IR-USB cable
- User Manual
- Registration Card
- Software License Agreement
- Installation Instructions for IR-USB cable

FVF-SC4

FlukeView Forms with Cable for 8845/8846

FVF-UG

FlukeView Forms for 8845/8846 Software Upgrade

FVF-Basic

FlukeView® Forms Basic Software with cable (280 Series, 180 Series, 789, 1653B and 1550B)

Includes:

- CD for FlukeView Forms Basic
- Plastic Infrared Adapter (aids meter/PC connection)
- PC to meter IR-USB cable
- User Manual
- Registration Card

- Software License Agreement
 - Installation Instructions for IR-USB cable
-

FVF-SC5

FlukeView® Forms Basic Software - no Cable (For all instruments listed above.)

Includes:

- CD for FlukeView Forms
 - PC to meter serial cable
 - User Manual
 - Registration Card
 - Software License Agreement
-

Fluke. *Keeping your world up and running.®*

Fluke Italia S.r.l.
Viale Lombardia 218
20861 Brugherio (MB)
Tel: +39 02 3600 2000
E-mail: cs.it@fluke.com
www.fluke.it

©2025 Fluke Corporation. Tutti i diritti riservati.
Dati passibili di modifiche senza preavviso.
04/2025

**Non sono ammesse modifiche al presente
documento senza autorizzazione scritta da parte
di Fluke Corporation.**