

Dati tecnici

## 2680A-OPC | OPC software for Fluke 2680 Series



### Descrizione generale del prodotto: 2680A-OPC | OPC software for Fluke 2680 Series

OPC is a standard interface for passing data and communicating information between programs and devices in the Windows environment. When using the 2680A-OPC software, client programs such as National Instruments LabVIEW™, Canary Labs Trend Link, Wonderware® software and many others may request real-time or historical data from the Fluke DAQ database.

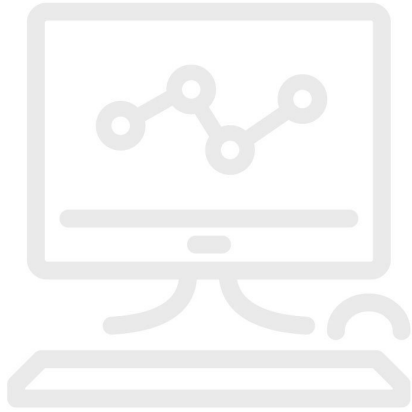
#### Requirements

700 MHz processor or greater

Windows 2000 or later

Free disk space – 400 MB

## Modelli



### **2680A-OPC**

OPC softWare for Fluke 2680 Series

---

**Fluke.** *Keeping your world up and running.®*

**Fluke Italia S.r.l.**  
Viale Lombardia 218  
20861 Brugherio (MB)  
Tel: +39 02 3600 2000  
E-mail: cs.it@fluke.com  
www.fluke.it

©2025 Fluke Corporation. Tutti i diritti riservati.  
Dati passibili di modifiche senza preavviso.  
03/2025

**Non sono ammesse modifiche al presente  
documento senza autorizzazione scritta da parte  
di Fluke Corporation.**