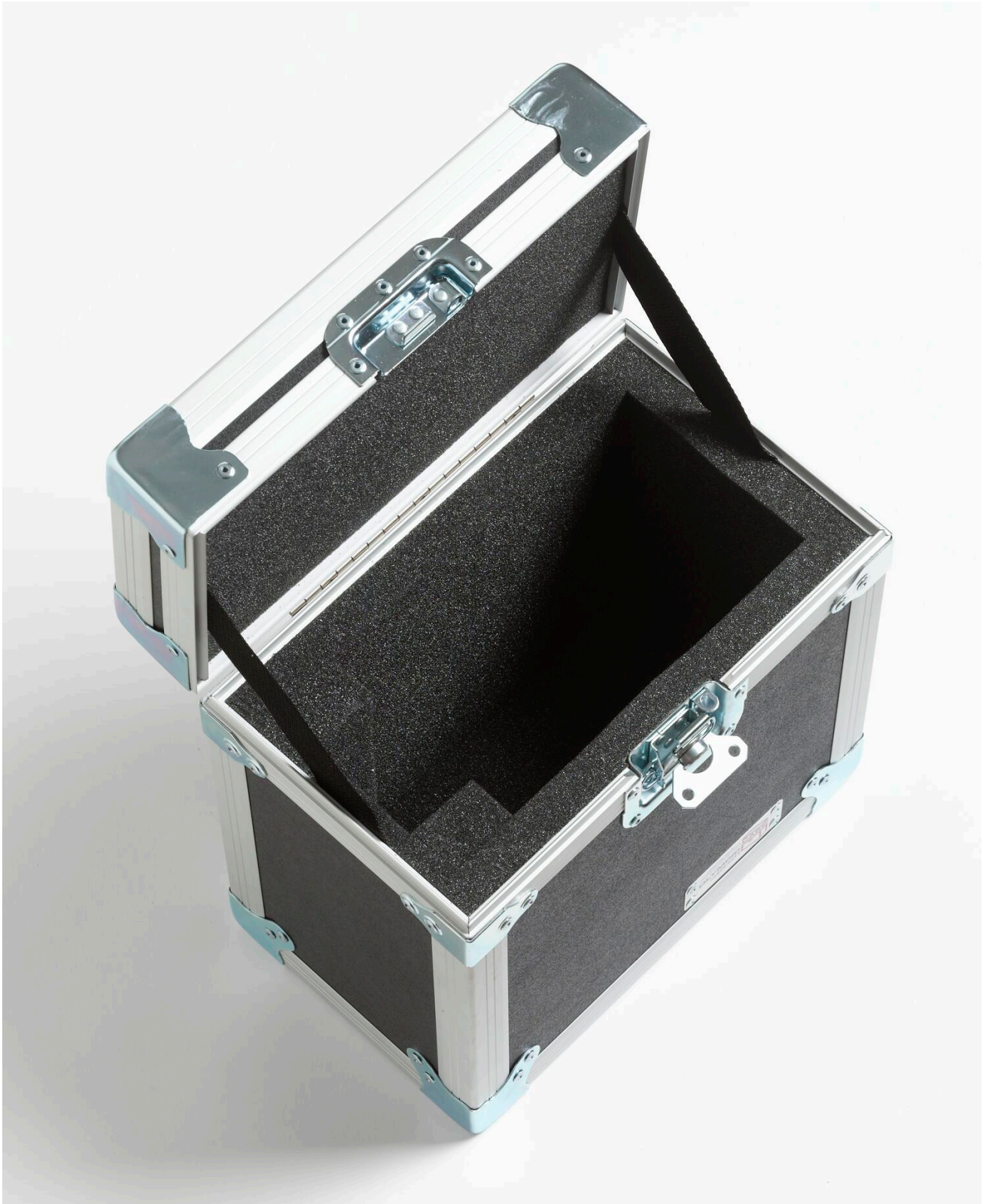


Data teknis

## 9316 | Rugged Carrying Case : 9103





## **Ikhtisar Produk: 9316 | Rugged Carrying Case : 9103**

- Rugged carrying case for the 9103 Dry-Well Calibrator
- Laminated birch or lightweight composite panels

- Recessed steel handles and latches
- Foam lined for impact protection



## Model



### **9316**

Rugged Carrying Case : 9103

---

**Fluke.** *Memastikan aktivitas Anda terus berjalan dan beroperasi.*

**Fluke Corporation**

PO Box 9090, Everett, WA 98206 U.S.A.

**For more information call:**

In the U.S.A. (800) 443-5853

In Europe/M-East/Africa

+31 (0)40 267 5100

In Canada (800)-36-FLUKE

From other countries +1 (425) 446-5500

[www.fluke.com](http://www.fluke.com)

**BUT. FLUKE SOUTH EAST ASIA PTE LTD**

Menera Satu Sentra Kelapa Gading #06-05

Jl. Bulevar Kelapa Gading Kav. LA# No. 1

Summarecon Kelapa Gading

Jakarta Utara 14240

Indonesia

Tel: +62 21 2938 5922

Email: [info.asean@fluke.com](mailto:info.asean@fluke.com)

[www.fluke.com/id](http://www.fluke.com/id)

©2025 Fluke Corporation. Specifications subject to change without notice.

04/2025

**Modification of this document is not permitted without written permission from Fluke Corporation.**