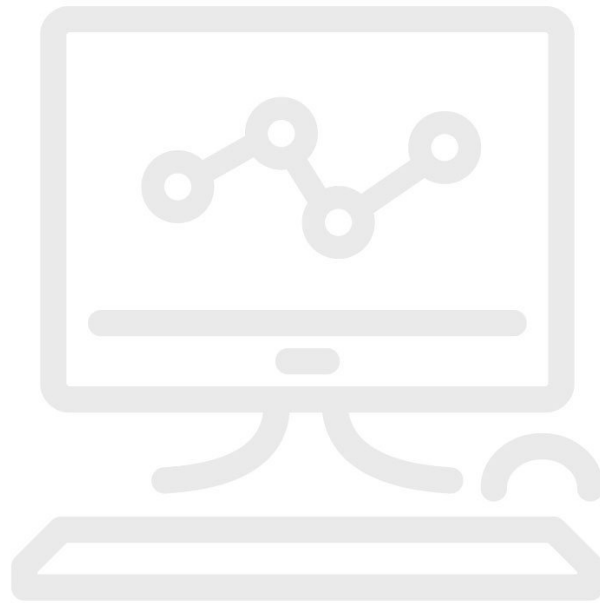


Tekniset tiedot

## Database Migration Assistance



### Tuotekatsaus: Database Migration Assistance

Automated calibration installations are becoming more complex. Often it is a daunting challenge for the cal lab manager to get the hardware and software operating as expected. Fluke can help you migrate calibration data from your old database to a new MET/CAL® Plus database. Here is how this service works:

- You ship your “legacy” data, as a text file in delimited format, to the Fluke MET/SUPPORT product support group.
- You tell us what fields are represented in the legacy data so we know how to correlate them into MET/BASE.
- We will perform the data transfer and send you a populated MET/BASE file.

Database migrations do not, by nature, leave you with a perfect copy of the old data in the new database. Some data may be lost due to improper data entry methods or poor database structure/integrity.

## Mallit



### **MS-MIGRATE**

Database Migration Assistance

---

**Fluke.** *Keeping your world up and running.®*

**Fluke Finland Oy**  
Teknobulevardi 3-5  
01530 VANTAA  
Puh.: 0800 111 862  
E-mail: cs.fi@fluke.com  
www.fluke.fi

©2025 Fluke Corporation. Kaikki oikeudet  
pidätetään. Oikeudet muutoksiin ilman  
ennakkoilmoitusta pidätetään.  
04/2025

**Tätä asiakirjaa ei saa muokata ilman Fluke  
Corporationin kirjallista lupaa.**