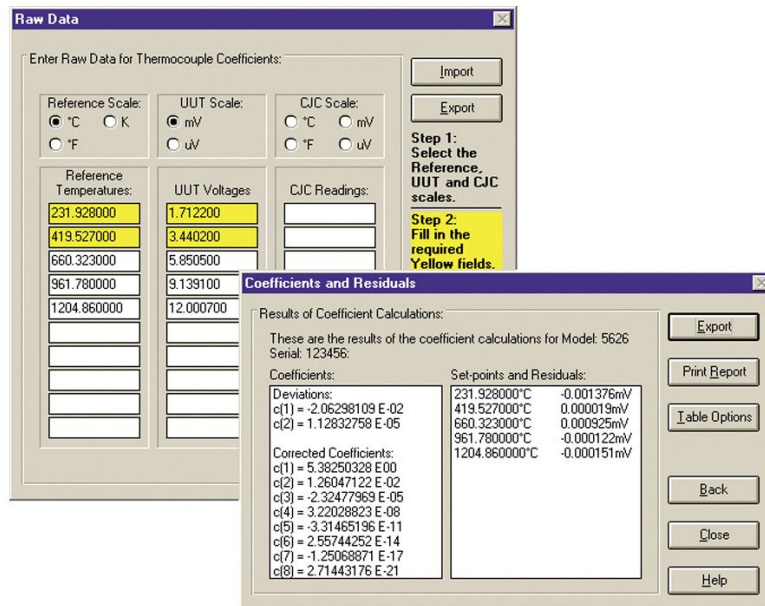


# 9933 TableWare v3 - Temperature Calibration Software



## Tärkeimmät ominaisuudet

- Uses manually entered data for calculations provided by MET/TEMP II.
- Compatible with Windows 7, 8, and 10 operating systems.

## Tuotekatsaus: 9933 TableWare v3 - Temperature Calibration Software

TableWare calculates coefficients for RTDs, thermistors and thermocouples. It uses ITS-90, IPTS-68, Callendar-Van Dusen and polynomial equations. TableWare also generates temperature vs. resistance, temperature vs. ratio and temperature vs. EMF tables.

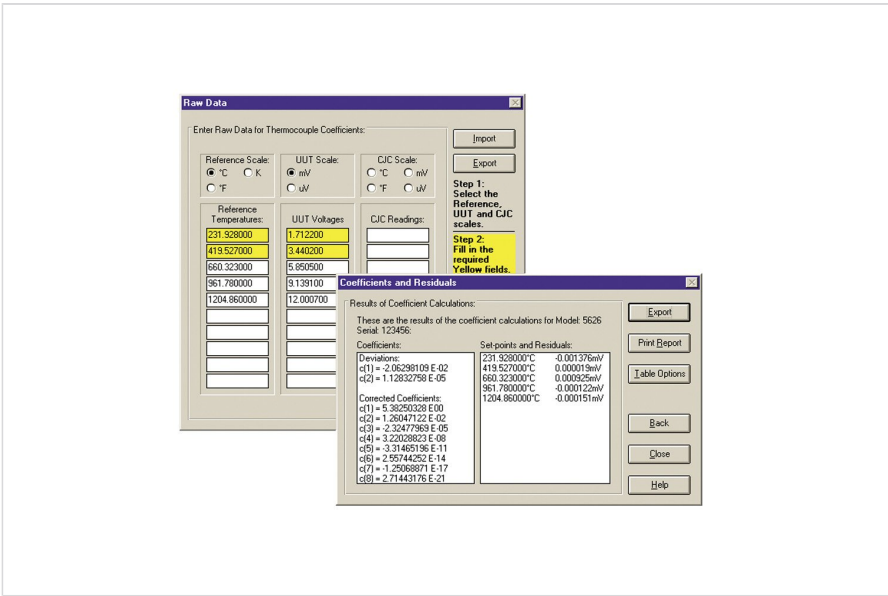
Simply enter or import the raw resistance or voltage data from your calibrations. TableWare generates coefficients, calculates residual values and generates useful tables.

Tables and coefficients can be exported to a text file for analysis in other software packages.

Also, TableWare allows you to generate tables from coefficients that can be entered manually. No raw data is required!

TableWare v3.0 is compatible with Microsoft Windows 7, 8, and 10 operating systems.

# Mallit



## 9933-V3

TableWare Coefficient Calculation and Table Generation Software

**Fluke.** *Keeping your world up and running.®*

**Fluke Finland Oy**  
Teknobulevardi 3-5  
01530 VANTAA  
Puh.: 0800 111 862  
E-mail: cs.fi@fluke.com  
www.fluke.fi

©2025 Fluke Corporation. Kaikki oikeudet  
pidätetään. Oikeudet muutoksiin ilman  
ennakkoilmoitusta pidätetään.  
03/2025

**Tätä asiakirjaa ei saa muokata ilman Fluke  
Corporationin kirjallista lupaa.**