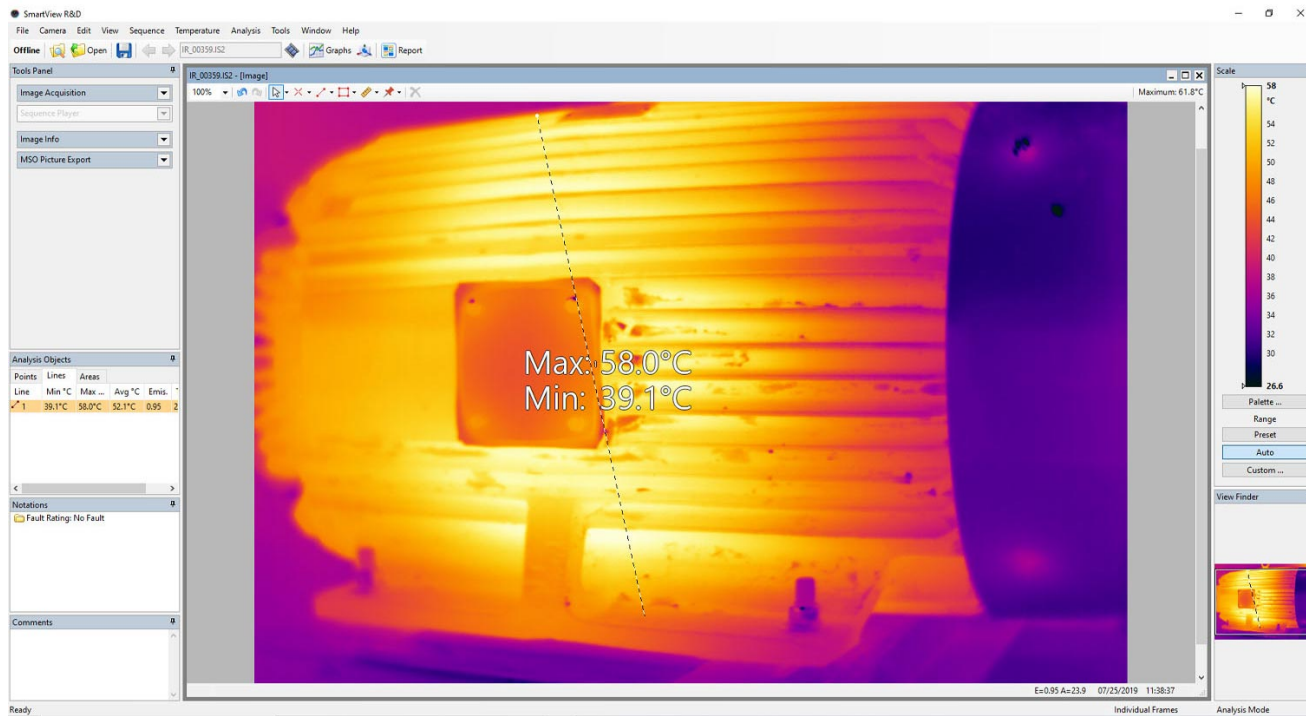



FLUKE®


TECHNICAL DATA

Fluke SmartView R&D Thermal Imaging Software





Foirtive™ User
Fortive™
WPBCSW-X38XG7-HZX3XE-632JYW-ER0DC6-9SRD




SmartView R&D

Version: 7.0
Build: 7.5.151

RSE, T_x500

Fluke Corporation
www.fluke.com
support@fluke.com
Copyright ©2019 Fluke Corporation

Powered by GRAYESS Inc.
www.grayess.com



Key features

- Customizable reports - display the information you need based on your application
- Real time radiometric data streaming capability
- Data trending and time plots
- Advanced analysis features; Spot measures, lines/profiles, area/histograms, hot/cold markers, rulers, adjustable emissivity by object, and more
- Easy to use file management

Product overview: Fluke SmartView R&D Thermal Imaging Software

SmartView R&D provides accurate and detailed analysis for professional thermographers from research and development to high end utilities and preventive maintenance programs. Users can quickly and easily create customized reports to share with the team and stream and analyze data directly from their thermal camera to a computer.

Fluke. *Keeping your world up and running.®*

Fluke Europe B.V.

P.O. Box 1186
5602 BD Eindhoven
The Netherlands
www.fluke.com/en

©2025 Fluke Corporation. All rights reserved.
Data subject to alteration without notice.
04/2025

For more information call:

In Middle East/Africa
+31 (0)40 267 5100

**Modification of this document is not permitted
without written permission from Fluke
Corporation.**