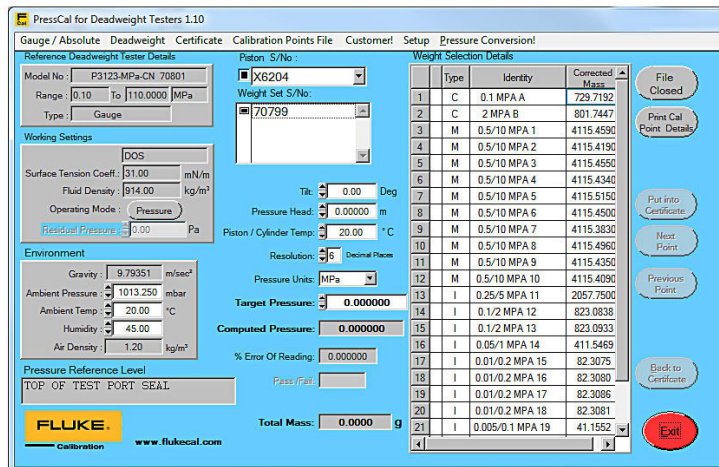


TECHNICAL DATA

PressCal Software



Key features

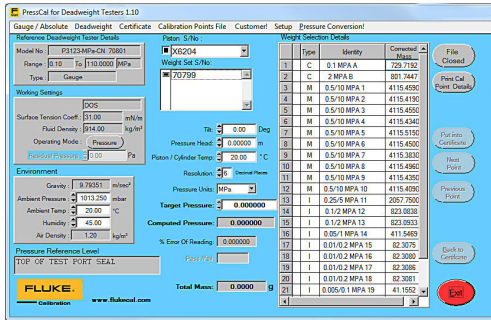
- Menu-driven software for pressure calculation and certificate generation using a deadweight tester.
- Developed for flexibility, speed, ease, and accuracy in calibrations.
- Apply all necessary corrections (e.g., local gravity, pressure head, temperature) to enhance the tester's performance.
- Store calibration details and/or automatically inserts them into a calibration certificate.

Product overview: PressCal Software

PressCal is a menu driven software program for pressure calculation and certificate generation using a deadweight tester as the pressure source. This software has been developed as a flexible working tool to make calibrations quicker, easier and more accurate. PressCal allows users to apply all necessary corrections (local gravity, pressure head, temperature, etc.) to enhance the performance of the deadweight tester. Calibration details are then stored and/or automatically inserted into a calibration certificate.

- Menu-driven, easy-to-use software
- Maintain multiple deadweight tester files
- Pressure equivalent calculations with all corrections applied
- Automatic generation of calibration certificates
- Pre-loaded calibration data
- Twelve pressure units
- Windows 95 or higher running on a 486 PC (minimum)

Ordering information



PressCal Software

Pressure Calibration Software



Fluke. *Keeping your world up and running.®*

Fluke Europe B.V.

P.O. Box 1186
5602 BD Eindhoven
The Netherlands
www.fluke.com/en

©2025 Fluke Corporation. All rights reserved.
Data subject to alteration without notice.
03/2025

For more information call:

In Middle East/Africa
+31 (0)40 267 5100

**Modification of this document is not permitted
without written permission from Fluke
Corporation.**