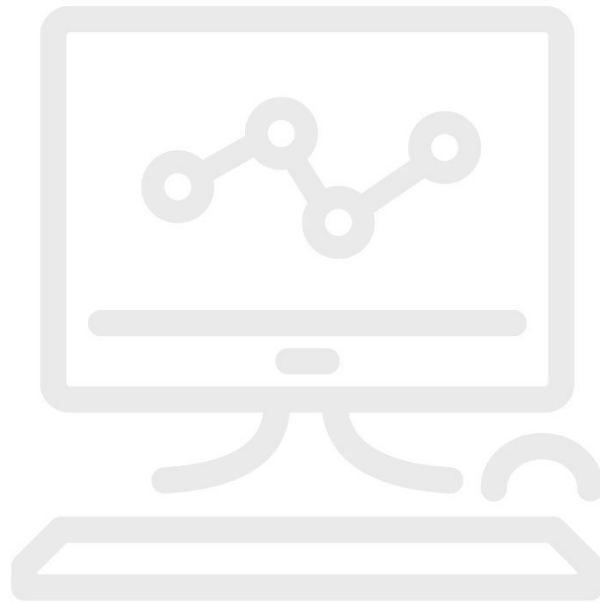


MET/CAL® Installation and Training Service



Key features

- On-Site Integration and Training: Simplifies complex calibration installations.
- Service: A specialist sets up and runs hardware and software, also provides training. Available in US and Canada.
- Three-and-a-half or Five-day assistance may include: database migration and configuration, MET/CAL setup, report installation, and training.

Product overview: MET/CAL® Installation and Training Service

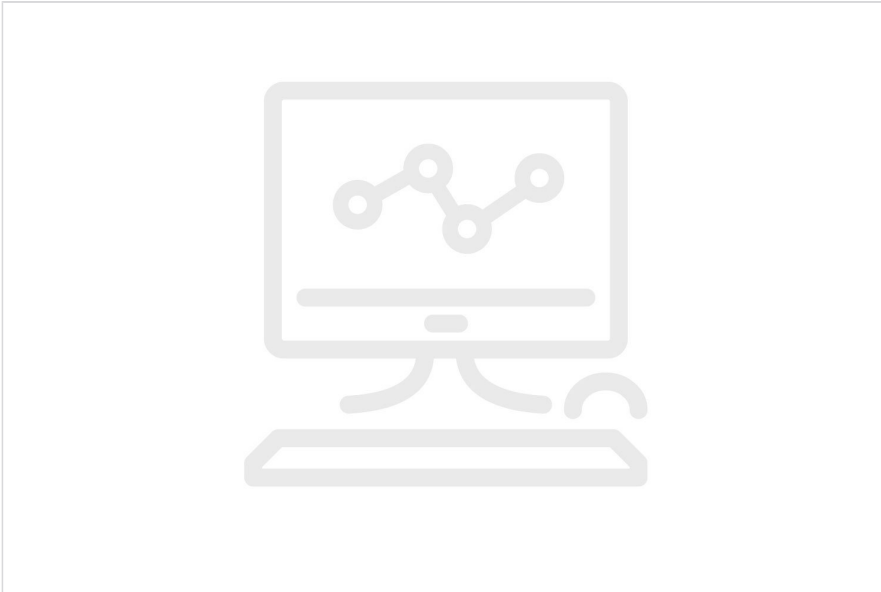
Automated calibration installations are becoming more complex. Often it is a daunting challenge for the cal lab manager to get the hardware and software operating as expected.

Fluke Calibration's On-Site System Integration and Training Option will solve that problem by giving you the opportunity to purchase the services of a qualified systems specialist to set up the hardware and software and get it running, and provide training and transition services. The service is available in the US and Canada only. A Fluke Calibration MET/CAL® specialist will come to your site and in five days provide the following services:

- Database migration
- Database configuration
- Install MET/CAL clients and load existing procedures
- Server and client setup
- Install basic reports

- Provide training with time remaining

Ordering information



MS-Onsite

MET/CAL Plus Installation and Training Service

Fluke. *Keeping your world up and running.®*

Fluke Europe B.V.

P.O. Box 1186
5602 BD Eindhoven
The Netherlands
www.fluke.com/en

©2025 Fluke Corporation. All rights reserved.
Data subject to alteration without notice.
03/2025

For more information call:

In Middle East/Africa
+31 (0)40 267 5100

**Modification of this document is not permitted
without written permission from Fluke
Corporation.**