

TECHNICAL DATA

# Fluke Ti95 Infrared Camera





## Key features

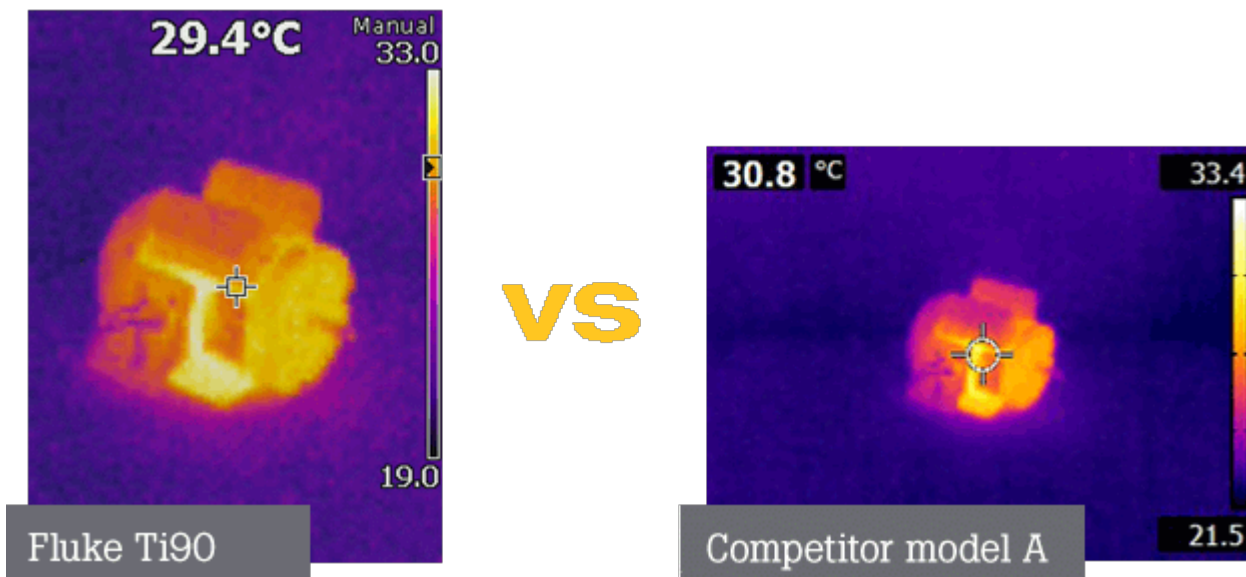
- The only wireless industrial infrared camera in its price class<sup>1</sup> – take advantage of the benefits of Fluke Connect® by seamlessly gathering and sharing inspection results instantly
- Superior image quality, up to 84% better spatial resolution than other competitive models in this price class<sup>1</sup>
- 80 x 80 resolution
- Removable 4GB SD memory card
- 8 GB Fluke Connect® wireless SD Card
- Find potential problems faster and easier with IR-Fusion® picture-in-picture mode
- 2 megapixel built-in digital camera
- 3.5 inch LCD
- Smart Battery System - Lithium ion smart battery pack with five-segment LED display to show charge level
- Rugged, lightweight, point-and-shoot infrared camera

<sup>1</sup> Class is defined as an industrial handheld infrared camera in the same price range based on MSRP as of May 1, 2014.

## Product overview: Fluke Ti95 Infrared Camera

### BETTER detail, BIGGEST display, BEST VALUE in their class<sup>1</sup>

Images were captured under the same conditions and from the same distance of 1.2 m (4 ft) by a professional thermographer and exported in a JPEG format. Except for the captions in the lower, left-hand corner of each image, images are displayed as saved by each infrared camera.



Features rich affordability at your fingertips with DIFFERENCES YOU CAN SEE.

- See more detail with 23% better spatial resolution<sup>1</sup> – increases the detail in your inspection target
- Easier to see potential problems with a 32% larger display<sup>1</sup>



**Prevent unexpected loss of power** with pop in/pop out replaceable smart batteries with handy LED charge level indicator.



**Easy image transfer and more flexibility** with replaceable 12 GB of memory capacity (8 GB Fluke Connect® wireless card and 4 GB memory card.)



**Fluke Connect® compatible** - save and share measurements faster and easier from the field. <sup>2</sup>

**SmartView® software®** is included with all Fluke infrared camera.

<sup>1</sup>Compared to industrial handheld infrared cameras with list prices up to \$2,000.00 (USD) as of September 17, 2014.

<sup>2</sup>Within provider's wireless service area.

## Specifications: Fluke Ti95 Infrared Camera

Key Features	
IFOV (spatial resolution)	5.6 mRad
Detector resolution	80x80 (6,400 pixels)
Field of view	26 °H x 26 °V
Minimum focus distance	46 cm (18 in)
Focus system	Focus free (fixed focus)
Wireless connectivity	Fluke Connect™ app compatible with included wireless SD Card <sup>1</sup>
IR-Fusion® technology	IR-Fusion® Picture-in-Picture (AutoBlend™ mode available in SmartView® software)
Display	3.5 inch diagonal (portrait format)
Design	Rugged, lightweight, ergonomic design for one-handed use

Thermal sensitivity (NETD)	□ 0.10 °C at 30 °C target temp (100 mK)
Temperature measurement range	-20 °C to +250 °C (-4 °F to +482 °F)
Built-in digital camera (visible light)	2 megapixel industrial performance
Frame rate	9 Hz
<b>Data Storage and Image Capture</b>	
Extensive memory options	Removable 4 Gb SD memory card and 8 Gb wireless SD card (where available); direct download via USB-to-PC connection
File formats image	Non-radiometric (.bmp) or (.jpeg) or fully-radiometric (.is2) No analysis software required for non-radiometric (.bmp, .jpg) files
SmartView® software	SmartView® software, Fluke Connect™ <sup>1</sup> , and SmartView® Mobile App—full analysis and reporting software
<b>Baery</b>	
Baeries (field-replaceable, rechargeable)	One lithium ion smart baery pack with five-segment LED display to show charge level
AC baery charging system	In-imager charging. Optional two-bay baery charger or optional 12 V automotive charging adapter
<b>Temperature Measurement</b>	
Accuracy	± 2 °C or 2 % (at 25 °C nominal, whichever is greater)
On-screen emissivity correction	Yes (both value and table)
On-screen reflected background temperature compensation	Yes
<b>General Specifications</b>	
Color palettes	6 standard: Ironbow, Blue-Red, High-Coast, Amber, Hot Metal, Grayscale
Spot temp	Hot and cold spot markers
Center box	Fixed-size measurement box with MIN-MAX-AVG temp
Drop	Engineered to withstand 2 meter (6.5 feet) drop
Size (H x W x L)	28.4 cm x 8.6 cm x 13.5 cm (11.2 in x 3.4 in x 5.3 in)
Weight (baery included)	0.73 kg (1.6 lb)
Enclosure rating	IP54 (protected against dust, limited ingress; protection against water spray from all directions)
Warranty	Two-years (standard), extended warranties are available
<b>Notes</b>	
<sup>1</sup> Fluke Connect™ not available in all countries	

## Ordering information



### **FLK-Ti95 9Hz**

Fluke Ti95 Infrared Camera

Includes:

- Infrared camera
- AC power adapter
- Lithium ion smart battery (1)
- USB cable
- SD memory card
- Fluke Connect™ wireless SD Card (where available, shipped separately in non-European countries)
- Soft transport bag
- Adjustable hand strap (left- or right-handed use)
- Warranty registration card

Available for free download:

- SmartView® Analysis and Reporting Software »
- Manual »

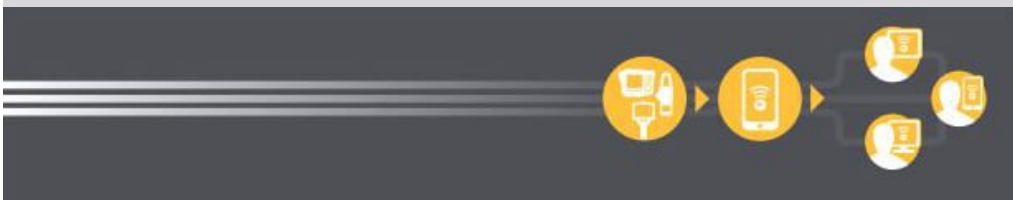


**Preventive maintenance simplified. Rework eliminated.**

Save time and improve the reliability of your maintenance data by wirelessly syncing measurements using the Fluke Connect® system.

- Eliminate data-entry errors by saving measurements directly from the tool and associating them with the work order, report or asset record.
- Maximize uptime and make confident maintenance decisions with data you can trust and trace.
- Access baseline, historical and current measurements by asset.
- Move away from clipboards, notebooks and multiple spreadsheets with a wireless one-step measurement transfer.
- Share your measurement data using ShareLive™ video calls and emails.

Find out more at [flukeconnect.com](http://flukeconnect.com)



All trademarks are the property of their respective owners. WiFi or cellular service required to share data. Smartphone, wireless service and data plan not included with purchase. First 5 GB of storage is free. Phone support details can be viewed at [fluke.com/phones](http://fluke.com/phones).

**Smart phone wireless service and data plan not included with purchase. Fluke Connect is not available in all countries.**