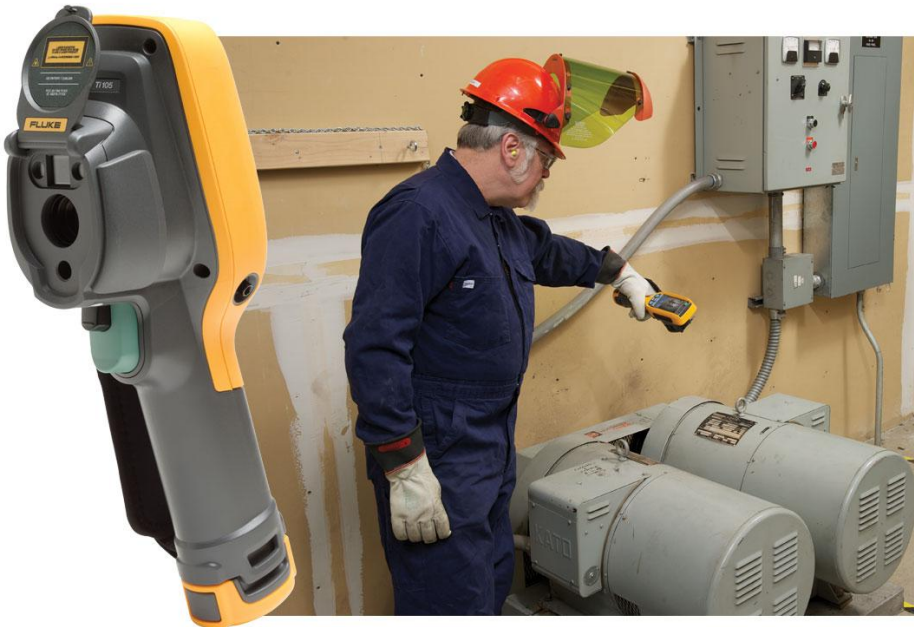
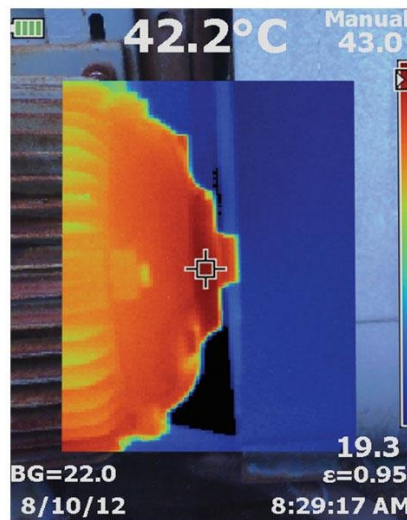


TECHNICAL DATA

Fluke Ti105 Infrared Camera for Industrial and Commercial Applications







Key features

- Experience the ultra-sleek intelligent design developed for you - rugged, ergonomic, lightweight, point-and-shoot, focus-free imager
- Find problems faster and easier with IR-Fusion® technology (Picture in Picture mode, Full IR, Full Visible)
- Illuminate dark places such as electrical cabinets and poorly lit mechanical rooms with integrated torch
- Fluke Connect® App – See It. Save It. Share It. All the facts, right in the field
- Show where the problems exist with the laser pointer
- Enjoy non-stop thermal imaging with field replaceable battery

Spend less time finding problems and more time solving them with Fluke's ultra-sleek Ti105 Industrial-Commercial Infrared Camera.

Product overview: Fluke Ti105 Infrared Camera for Industrial and Commercial Applications

[See How It Works](#)

[Fluke Connect FAQs](#)

Fluke quality, coupled with standard performance for everyday troubleshooting

Industrial and commercial professionals can save time and money identifying problems before they become costly

failures with the Ti105. This thermal imaging camera has 160 x 120 resolution and comes standard with [IR Fusion@Technology](#) - the blending of digital and infrared images into a single image making precise documentation quick and easy. The Ti105 is a cost effective way to perform infrared inspections faster and more efficient.

With thermal sensitivity (NETD) of ± 0.10 °C at 30 °C (100 mK) and a temperature range from -20 °C to 250 °C (-4 °F to 482 °F), the Ti105 is suited for everyday troubleshooting in most industrial applications; for higher temperature ranges see the Fluke Ti125.

The importance of ease of use and comfort while on the job

Using a thermal imaging camera for a long period of time can become uncomfortable and cumbersome very quickly. That's why the Ti105 was designed for one handed operation – it is lightweight and with a 3.5 inch LCD display, professionals can wear gloves and still easily maneuver the menu screen and buttons. The lithium-ion smart battery system with one-touch protective power level indicator is easy to remove and replace.

Introducing the largest system of connected test tools in the world

Unparalleled productivity and communication with the Fluke Connect® mobile app - collaborate and analyze with other Fluke tools from anywhere, with your team, at any time.

Specifications: Fluke Ti105 Infrared Camera for Industrial and Commercial Applications

Key Features	
IFOV (spatial resolution)	3.39 mRad
Detector resolution	160x120 (19,200 pixels)
Field of view	22.5 °H x 31 °V
Minimum focus distance	122 cm (48 in)
Focus system	Focus free (fixed focus)
Wireless connectivity	Fluke Connect™ app compatible with included wireless SD Card ¹
IR-Fusion® technology	IR-Fusion® AutoBlend™ mode (on camera mid IR only) and Picture-in-Picture
Display	3.5 inch diagonal (portrait format)
Design	Rugged, lightweight, ergonomic design for one-handed use
Thermal sensitivity (NETD)	± 0.10 °C at 30 °C target temp (100 mK)
Temperature measurement range	-20 °C to +250 °C (-4 °F to +482 °F)
Built-in digital camera (visible light)	2 megapixel industrial performance
Frame rate	30 Hz or 9 Hz versions
Data Storage and Image Capture	
Extensive memory options	Removable 4 Gb SD memory card and 8 Gb wireless SD card (where available); direct download via USB-to-PC connection

File formats image	Non-radiometric (.bmp) or (.jpeg) or fully-radiometric (.is2) No analysis software required for non-radiometric (.bmp, .jpg) files
SmartView® software	SmartView® software, Fluke Connect™ ¹ , and SmartView® Mobile App—full analysis and reporting software
Baery	
Baeries (field-replaceable, rechargeable)	One lithium ion smart baery pack with five-segment LED display to show charge level
AC baery charging system	In-imager charging. Optional two-bay baery charger or optional 12 V automotive charging adapter
Temperature Measurement	
Accuracy	± 2 °C or 2 % (at 25 °C nominal, whichever is greater)
On-screen emissivity correction	Yes (both value and table)
On-screen reflected background temperature compensation	Yes
General Specifications	
Color palettes	8 standard: Ironbow, Blue-Red, High-Coast, Amber, Amber Inverted, Hot Metal, Grayscale, Grayscale Inverted
Color alarms (temperature alarms)	High temperature
Center box	Expandable-coactible measurement box with MIN-MAX-AVG temp
Drop	Engineered to withstand 2 meter (6.5 feet) drop
Size (H x W x L)	28.4 cm x 8.6 cm x 13.5 cm (11.2 in x 3.4 in x 5.3 in)
Weight (baery included)	0.73 kg (1.6 lb)
Enclosure rating	IP54 (protected against dust, limited ingress; protection against water spray from all directions)
Warranty	Two-years (standard), extended warranties are available
Notes	
¹ Fluke Connect™ not available in all countries	

Ordering information



FLK-Ti105 30Hz

Fluke Ti105 Infrared Camera for Industrial and Commercial Applications

Includes:

- AC power adapter
- Lithium ion smart battery (1)
- USB cable
- SD Memory Card
- Fluke Connect WiFi SD card
- Hard carrying case
- Soft transport bag
- Adjustable hand strap (left- or right-handed use)
- Printed users' manual in English, Spanish, French, German and Simplified Chinese, all other manuals on CD SmartView® software
- Warranty registration card

FLK-Ti105 9 Hz

Industrial Thermal Camera (9 Hz)

Includes:

- Fluke Ti105 Thermal Camera
- AC power adapter
- Lithium ion smart battery (1)
- USB cable
- Fluke Connect® WiFi SD card

- Hard carrying case
 - Soft transport bag
 - Adjustable hand strap (left- or right-handed use)
 - Printed users' manual in English, Spanish, French, German and Simplified Chinese, all other manuals on CD SmartView® software
 - Warranty registration card
-



Preventive maintenance simplified. Rework eliminated.

Save time and improve the reliability of your maintenance data by wirelessly syncing measurements using the Fluke Connect® system.

- Eliminate data-entry errors by saving measurements directly from the tool and associating them with the work order, report or asset record.
- Maximize uptime and make confident maintenance decisions with data you can trust and trace.
- Access baseline, historical and current measurements by asset.
- Move away from clipboards, notebooks and multiple spreadsheets with a wireless one-step measurement transfer.
- Share your measurement data using ShareLive™ video calls and emails.

Find out more at flukeconnect.com



All trademarks are the property of their respective owners. WiFi or cellular service required to share data. Smartphone, wireless service and data plan not included with purchase. First 5 GB of storage is free. Phone support details can be viewed at fluke.com/phones.

Smart phone wireless service and data plan not included with purchase. Fluke Connect is not available in all countries.