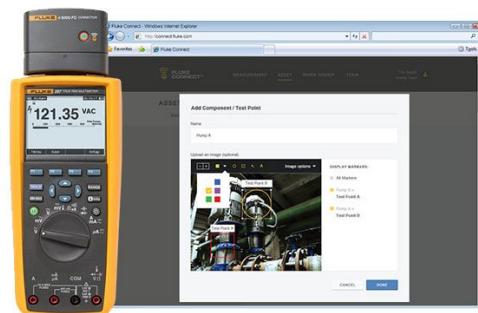
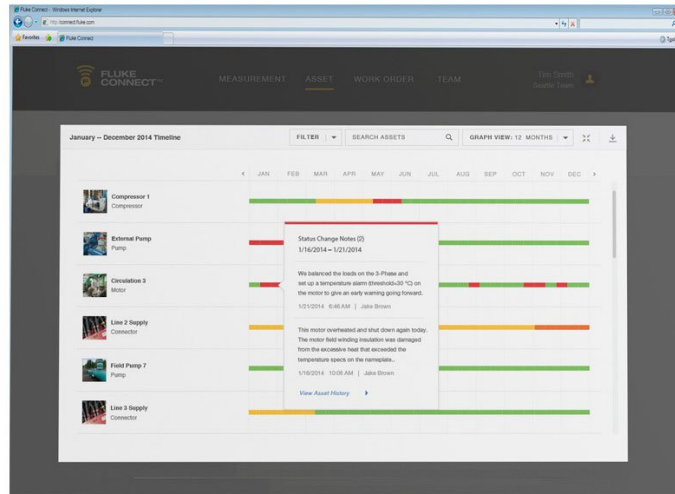


## TECHNICAL DATA

# Fluke 287 FlukeView® Forms Combo Kit





## Key features

### Equipped with new functionality

- NEW – Now compatible with Fluke Connect mobile app and all Fluke FC enabled test tools with optional ir3000 FC infrared connector (sold separately).
- NEW – Let your team see what you see in an instant with ShareLive™ video call (requires Fluke Connect mobile app and ir3000 FC wireless connector).
- TrendCapture quickly graphically displays logged data session to quickly determine whether anomalies may have occurred.
- Zoom on trend provides unprecedented ability to view and analyze TrendCapture data; zoom in up to 14 times.
- Selectable AC filter (smoothing mode) helps display a steadier reading when the input signal is changing rapidly or noisy.
- Adjustable recording and auto hold thresholds, specify a percentage change in the readings that begins a new event.
- Large 50,000 count, 1/4 VGA display with white backlight. Multiple sets of measurement information can be simultaneously displayed at the same time.
- Logging function with expanded memory for unattended monitoring of signals over time. Using on-board TrendCapture users can graphically review logged readings without needing a PC. Store up to 15,000 recorded events.
- On board help screens for measurement functions.
- Saved measurements allow you to name and recall measurements made in the field.
- Multi-lingual interface.
- Multiple logging sessions possible without download.
- 0.025% basic DC accuracy.
- 100 kHz ac bandwidth.
- Real time clock for automatic time stamping of saved readings.
- True RMS AC voltage and current for accurate measurements on complex signals or non-linear loads. AC bandwidth specified to 100 kHz.
- Measure up to 10 A (20 A for 30 seconds).
- 100 mF capacitance range.
- Temperature function.
- Relative mode to remove test lead resistance from low ohms or capacitance measurements.
- Peak capture to record transients as fast as 250  $\mu$ s.
- Premium test leads and alligator clips included.
- Amp jack plugs included.
- FlukeView forms enable you to document, store and analyze individual readings or a series of measurements, then convert them into professional-looking documents.
- Optional magnetic hanger allows you to hang the meter for easy viewing while freeing your hands to focus on the job.
- Limited lifetime warranty.

## Product overview: Fluke 287 FlukeView® Forms Combo Kit

### Now compatible with Fluke Connect® Mobile App

Maximize productivity with the combined Fluke 287 and FlukeView® forms combo kit. Designed for today's professionals involved in R&D, maintenance, manufacture and design of electronic circuits or systems. With built-in

data logger and TrendCapture™ (the meters on screen graphical display) capability, the 287 helps you track down elusive, intermittent problems or monitor equipment with any of its functions.

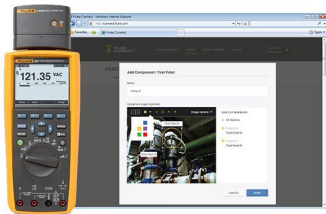
FlukeView Forms enables you to document, store, and analyze individual readings or series of measurements, overlay logged data to find cause and effect relationships, or turn your data into meaningful graphs and tables for a professional report. The 287 is compatible with the new Fluke ir3000 FC Infrared Connector, allowing you to share live measurements on your iOS or Android smart device with the Fluke Connect mobile app. The 287/FVF combo kit gives you a practical and affordable approach to documenting circuit design performance.

## Specifications: Fluke 287 FlukeView® Forms Combo Kit

Specifications		
Function		
DC volts	Range / resolution	50.000 mV, 500.00 mV, 5.0000 V, 50.000 V, 500.00 V, 1000.0 V
	Basic accuracy	0.025%
AC volts	Range / resolution	50.000 mV, 500.00 mV, 5.0000 V, 50.000 V, 500.00 V, 1000.0 V
	Basic accuracy	0.4% (True-RMS)
DC current	Range / resolution	500.00 µA, 5000.0 µA, 50.000 mA, 400.00 mA, 5.0000 A, 10.000 A
	Basic accuracy	0.05%
AC current	Range / resolution	500.00 µA, 5000.0 µA, 50.000 mA, 400.00 mA, 5.0000 A, 10.000 A
	Basic accuracy	0.6% (True-RMS)
Temperature (excluding probe)	Range / resolution	-200.0°C to 1350.0°C (-328.0°F to 2462.0°F)
	Basic accuracy	1.0%
Resistance	Range / resolution	500.00 Ω, 5.0000 kΩ, 50.000 kΩ, 500.00 kΩ, 5.0000 MΩ, 50.00 MΩ, 500.0 MΩ
	Basic accuracy	0.05%
Capacitance	Range / resolution	1.000 n, 10.00 nF, 100.0 nF, 1.000 µF, 10.00 µF, 100.0 µF, 1000 µF, 10.00 mF, 100 mF
	Basic accuracy	1.0%
Frequency	Range / resolution	99.999 Hz, 999.99 Hz, 9.9999 kHz, 99.999 kHz, 999.99 kHz
	Basic accuracy	0.005%
Connectivity	Optional infrared connector via Fluke ir3000 FC	
General Specifications		
Maximum voltage between any terminal and earth ground	1000 V	
Baery type	6 AA alkaline baeries, NEDA 15A IECLR6	

Baery life	100 hours minimum, 200 hours in logging mode	
Temperature	<b>Operating</b>	-20°C to 55°C
	<b>Storage</b>	-40°C to 60°C
Relative humidity	0 to 90% (0 to 37°C), 0 to 65% (37°C to 45°C), 0 to 45% (45°C to 55°C)	
Electromagnetic compatibility	EMC EN61326-1	
Vibration	Random vibration per MIL-PRF-28800F Class 2	
Shock	1 meter drop per IEC/EN 61010-1 3rd Edition	
Size (H x W x L)	22.2 x 10.2 x 6 cm (8.75 x 4.03 x 2.38 in)	
Weight	870.9 g (28 oz)	
Multiple on screen displays	Yes	
True-RMS AC bandwidth	100 kHz	
dBV/dBm	Yes	
DC mV resolution	1 $\mu$ V	
Megohm range	Up to 500 M $\Omega$	
Conductance	50.00 nS	
Continuity beeper	Yes	
Baery/fuse access	Yes/Yes	
Elapse time clock	Yes	
Time of day clock	Yes	
Min-max-avg	Yes	
Peak	250 $\mu$ s	
Duty cycle	0.01% to 99.99%	
Pulse width	0.025 ms, 0.25 ms, 2.5 ms, 1250.0 ms	
Hold	Yes	
Isolated optical interface	Yes	
Auto/touch hold	Yes	
Reading memory	Yes	
Log to PC	Yes	
Interval/event logging	Yes	
Logging memory	Up to 10,000 readings	
Wireless connectivity (optional)	Yes	

## Ordering information



### Fluke 287 Kit

Fluke 287 FlukeView® Forms Combo Kit

Includes:

- Fluke 287 Multimeter
- FlukeView® Forms Software with cable
- 80BK-A Thermocouple Probe
- CAT III 1000 V 10 A Modular Test Leads (red, black)
- CAT II 1000 V 10 A Modular Test Probes (red, black) and CAT III rated caps
- CAT III 1000 V 10 A Alligator Clips (red, black)
- Magnetic hanging strap
- TLK287 Electronic Test Lead Set
- C280 Soft Case
- Amp Jack Plug Set

Requires Fluke ir3000 FC Infrared Connector for Fluke Connect communication (not included in FVF Kit)

**Fluke.** *Keeping your world up and running.®*

**Fluke Corporation**  
PO Box 9090, Everett, WA 98206 U.S.A.

**For more information call:**  
In the U.S.A. (800) 443-5853  
In Canada (800) 36-FLUKE  
From other countries +1 (425) 446-5500  
[www.fluke.com](http://www.fluke.com)

©2025 Fluke Corporation.  
Specifications subject to change without notice.  
04/2025

**Modification of this document is not permitted  
without written permission from Fluke  
Corporation.**