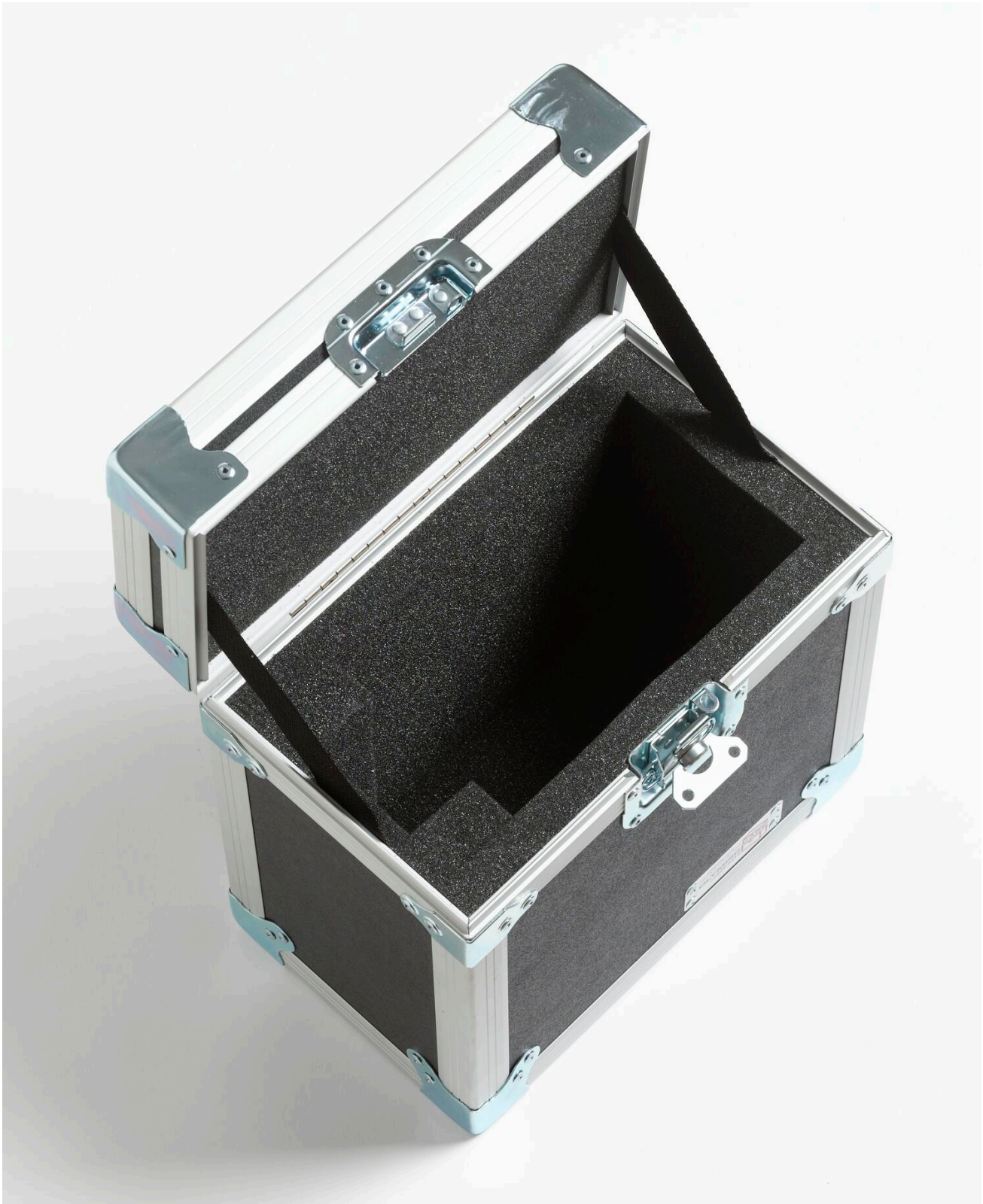


TECHNICAL DATA

9316 | Rugged Carrying Case : 9103





Product overview: 9316 | Rugged Carrying Case : 9103

- Rugged carrying case for the 9103 Dry-Well Calibrator
- Laminated birch or lightweight composite panels

- Recessed steel handles and latches
- Foam lined for impact protection

Ordering information



9316

Rugged Carrying Case : 9103

Fluke. *Keeping your world up and running.®*

Fluke Corporation
PO Box 9090, Everett, WA 98206 U.S.A.

For more information call:
In the U.S.A. (800) 443-5853
In Europe/M-East/Africa
+31 (0)40 267 5100
In Canada (800)-36-FLUKE
From other countries +1 (425) 446-5500
www.fluke.com/en-th

©2025 Fluke Corporation. Specifications subject to
change without notice.
04/2025

**Modification of this document is not permitted
without written permission from Fluke
Corporation.**