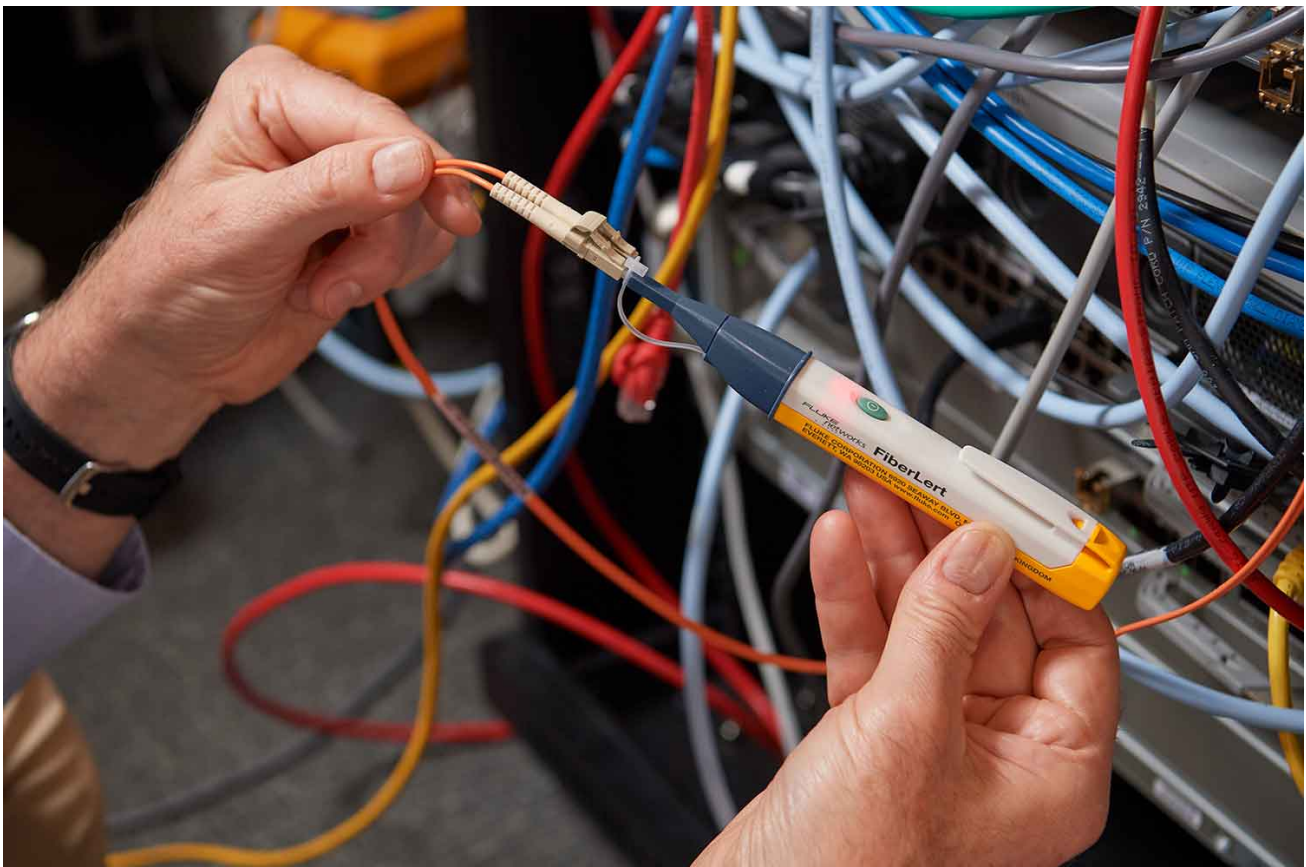
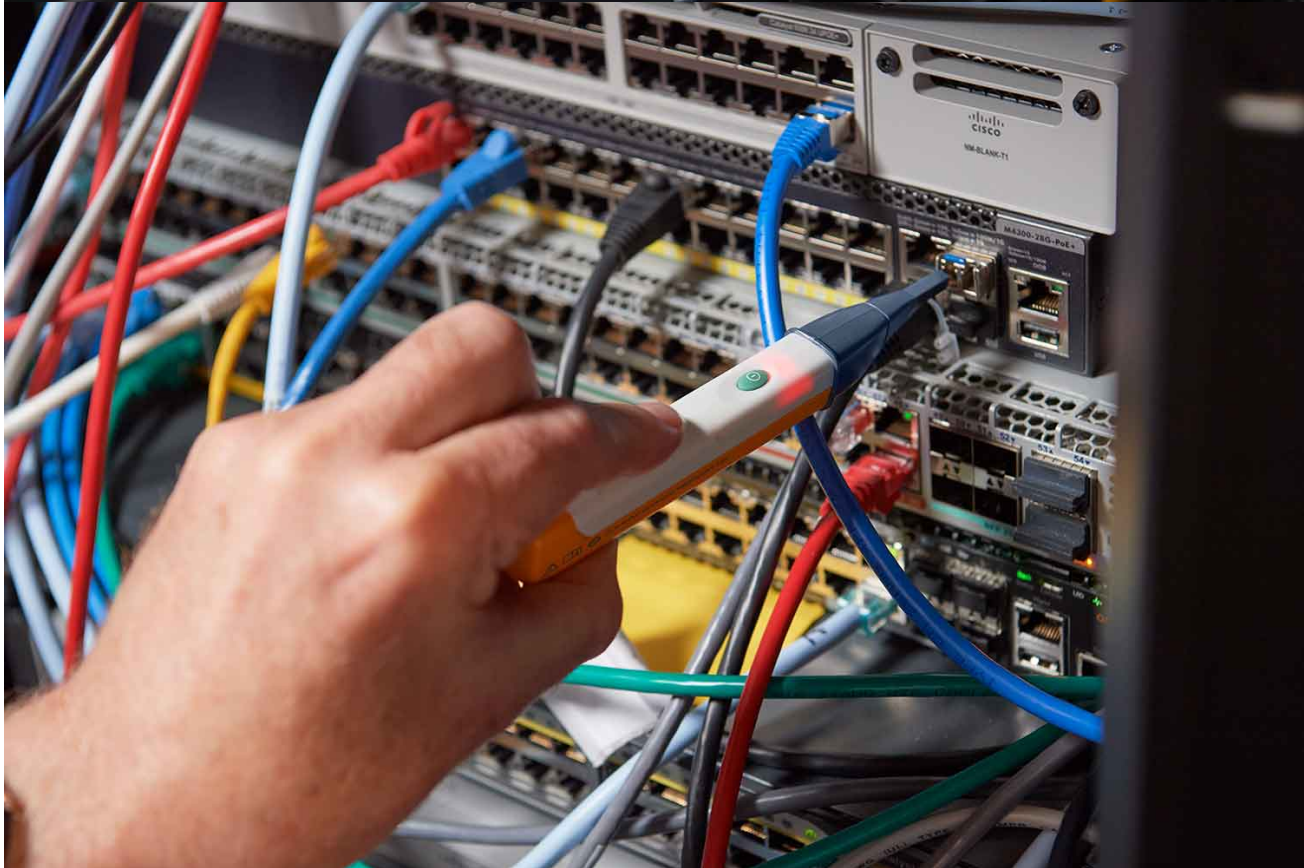


TECHNICAL DATA

Fluke Networks FiberLert™ Detector





Key features

- Detects optical power in SM and MM fiber (850 to 1625 nm)
- No setup or interpretation – light and sound indicate signal
- “Non-contact” detector reduces risk of contamination and damage
- Suitable for ports and patch cords, SM, MM, UPC and APC
- LightBeat™ feature indicates operation and battery status

Product overview: Fluke Networks FiberLert™ Detector



Quickly check fiber activity, polarity, and connectivity

Just place in front of the fiber end face or port and a light and tone indicate an active fiber (850 nm to 1625 nm) - no setup or interpretation required.

This pocket-sized tool tests:

- Single-mode
- Multimode
- UPC and APC patch cords
- Ports with a non-contact / non-contaminating detector

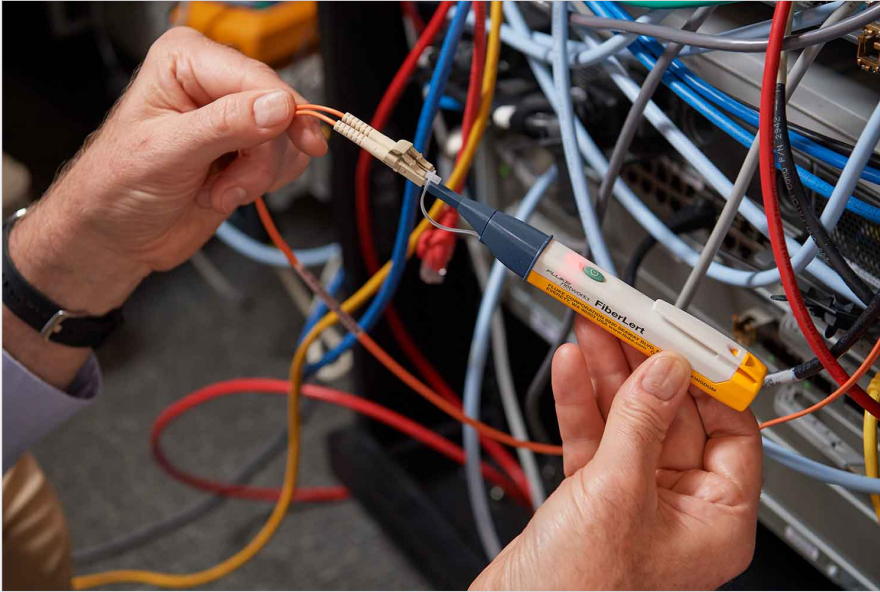
The LightBeat™ feature flashes the LED, indicating a powered-on condition and good battery and a timer shuts FiberLert™ Detector off after five minutes of inactivity to extend battery life (2xAAA, included). Rugged design includes a convenient pocket clip and is backed by a two-year warranty.

Specifications: Fluke Networks FiberLert™ Detector

Specifications	
Operating Principle	FiberLert is a live fiber detector that senses near infrared light emitted from fiber optic cabling. A continuous red glow at the handle and an audible beeping noise (if not switched off) indicates the presence of near infrared light.
Optical Interface	Non-contact ceramic ferrule. Fits directly with 1.25 mm LC receptacles. Tethered ferrule adapter for testing 1.25 mm ferrule patch cord. Supports single-mode, multimode, UPC and APC connectors and ports.
Wavelength Detection	850 nm to 1625 nm
Optical Power Detection Range	+3 dBm to -30 dBm

Light Detection	Visible steady red LED indicator when optical power is detected
Lightbeat™ Indicator	Flashes twice every two seconds when unit is on and battery strength is sufficient.
Battery Saver	Unit automatically turns off after five minutes of inactivity
Batteries	2 AAA alkaline batteries included
Battery Life	Typically, greater than 1 year (5 hrs. of use a week)
Item Size	0.6" x 1.0" x 6.6" / 1.6 x 2.5 x 16.8 cm
Item Weight	2.1 oz / 59 g
Operating Temperature Range	-10 °C to 50 °C
Operating Humidity Ranges	95 % (10 °C to 35 °C)
	Non-condensing 75 % (35 °C to 40 °C)
	Non-condensing uncooled < 10 °C
Operating Altitude	□ 3000 meters
Storage Temperature	-20 °C to 50 °C

Ordering information



FIBERLERT-125

FiberLert™ Detector

Includes:

- FiberLert™ Detector
 - Instruction card
 - 2 AAA batteries
-



Fluke. *Keeping your world up and running.®*

Fluke Corporation
PO Box 9090, Everett, WA 98206 U.S.A.

For more information call:
In the U.S.A. (800) 443-5853
In Canada (800) 36-FLUKE
From other countries +1 (425) 446-5500
www.fluke.com

©2025 Fluke Corporation.
Specifications subject to change without notice.
03/2025

**Modification of this document is not permitted
without written permission from Fluke
Corporation.**