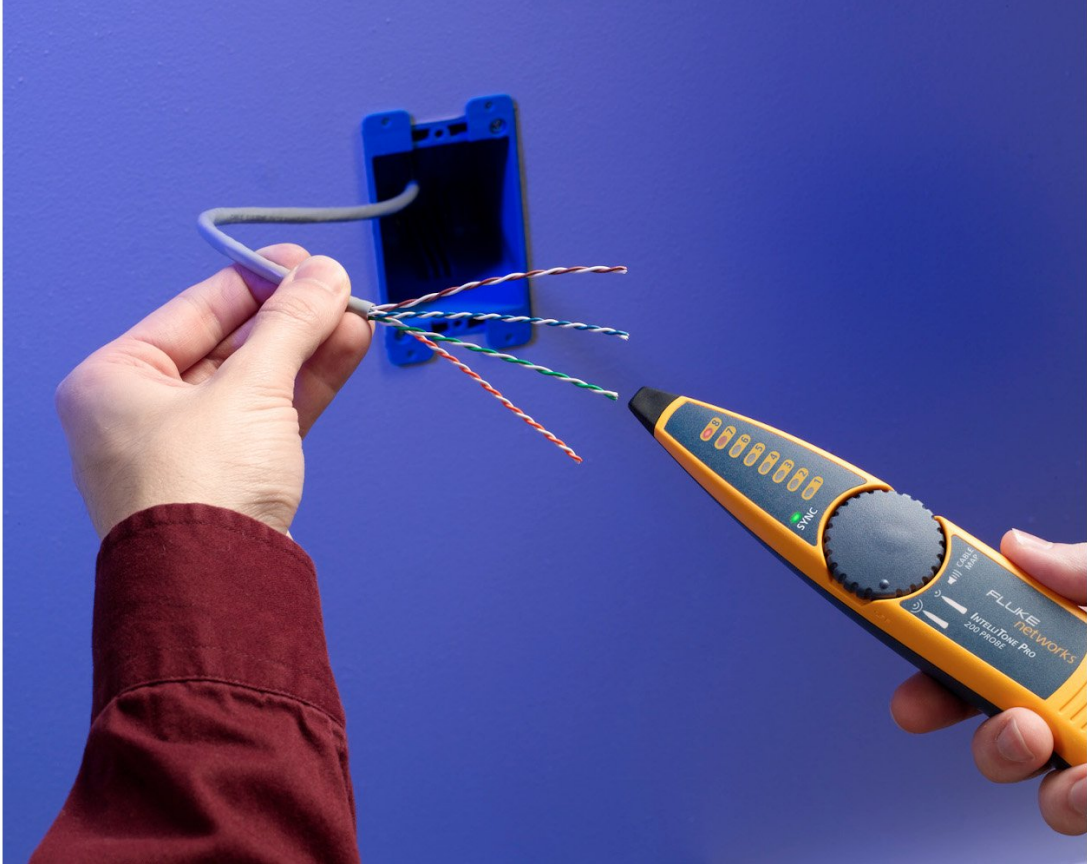
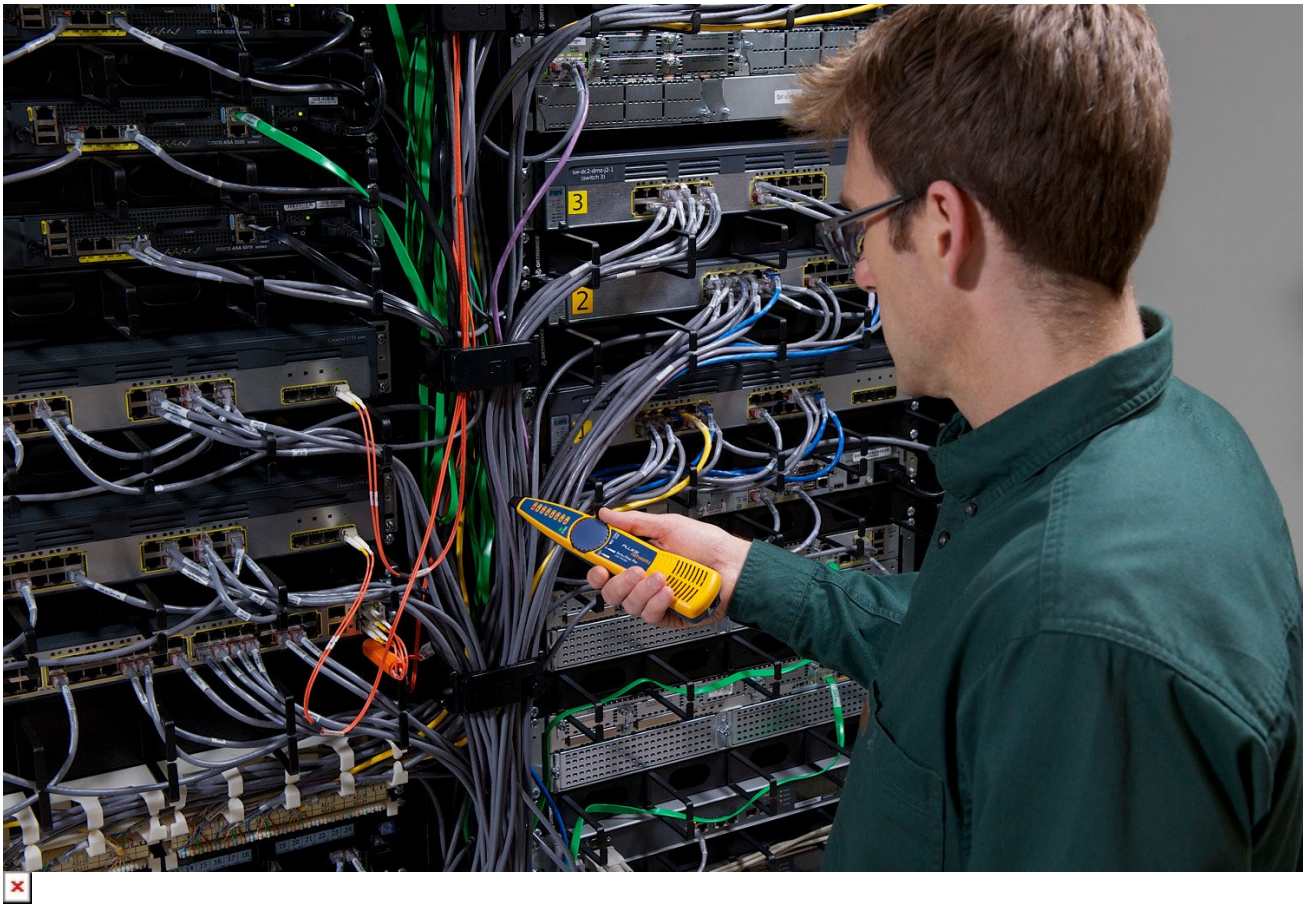


TECHNICAL DATA

# Fluke Networks MT-8200-63A IntelliTone™ Pro 200 Probe







## Key features

- Detects IntelliTone™ digital signals on active networks
- Includes: IntelliTone™ Pro 200 probe, RJ11 and RJ 45 patch cables, 9-V battery
- Identifies signals audibly and with 8 LEDs
- LED shows battery strength at power up and confirms signals
- Turns off automatically after 1 hour of inactivity

## Product overview: Fluke Networks MT-8200-63A IntelliTone™ Pro 200 Probe

MT-8200-63A Probe detects IntelliTone™ digital signals on active networks and 500 to 1,200 Hz analog signals on inactive networks to locate, trace, and isolate copper cabling

## Specifications: Fluke Networks MT-8200-63A IntelliTone™ Pro 200 Probe

### General specifications

Operating temperature	32 °F to 104 °F (0 °C to 40 °C)
-----------------------	---------------------------------

Storage temperature	-4 °F to +140°F (-20 °C to °C)
Operating relative humidity (% RH without condensation)	95 % (50 °F to 95 °F; 10 °C to 35 °C) 75 % (95 °F to 104 °F; 35 °C to 40 °C) Uncooled < 50 °F (< 10 °C)
Vibration	Random, 2 g, 5 Hz-500 Hz
Shock	1 m drop test
Safety	EN 61010-1, Category: None
Altitude	3000 m
EMC	EN 61326-1, FCC Part 15 B
Battery type and life	9 V alkaline (NEDA 1604A or IEC 6LR61); 20 hours typical
Applications	Copper cabling media including; 75 or 50 Ohm Coaxial cable; Two Conductor coax, security, generic cabling. 10 Base-T or 10/100 Base-T datacom networks. UTP cable. Shielded Twisted Pair supported in Cable Map function of the IntelliTone 200.
<b>Probe specifications</b>	
Dimensions	8.73 x 1.88 x 1.26 in (22.2 x 4.8 x 3.2 cm)
Display	(8) LED indicators, Sync LED indicator
Audio	IntelliTone: Microprocessor cooled audio files Analog: Detected toner signal
Cool	Thumbwheel switch, volume cool wheel
Tone detection	Detects IntelliTone™ digital signal for Locate, Isolate, and Cable Map Detects analog SmartTone signal (500-1200Hz) and other analog toners.
Toner interface	Main Mod8 port for Cable Map on all 4 pairs of UTP / STP cabling.
Auto power down	Tus off automatically after 1 hour of inactivity



**Fluke.** *Keeping your world up and running.®*

**Fluke Corporation**  
PO Box 9090, Everett, WA 98206 U.S.A.

**For more information call:**  
In the U.S.A. (800) 443-5853  
In Canada (800) 36-FLUKE  
From other countries +1 (425) 446-5500  
[www.fluke.com](http://www.fluke.com)

©2025 Fluke Corporation.  
Specifications subject to change without notice.  
04/2025

**Modification of this document is not permitted  
without written permission from Fluke  
Corporation.**