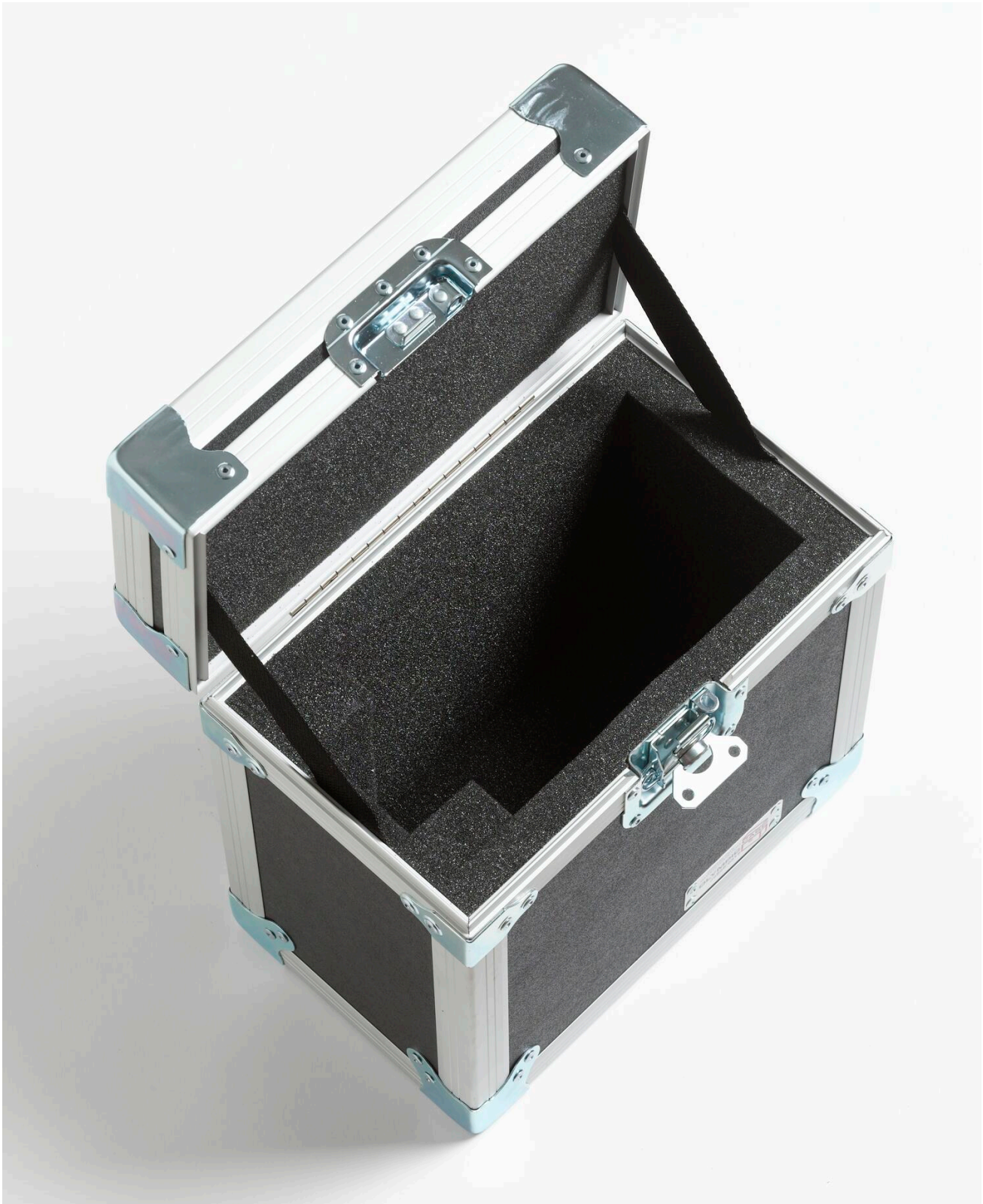


TECHNICAL DATA

# 9316 | Rugged Carrying Case : 9103





## Product overview: 9316 | Rugged Carrying Case : 9103

- Rugged carrying case for the 9103 Dry-Well Calibrator
- Laminated birch or lightweight composite panels

- Recessed steel handles and latches
- Foam lined for impact protection



## Ordering information



### **9316**

Rugged Carrying Case : 9103

**Fluke.** *Keeping your world up and running.®*

**Fluke Corporation**

PO Box 9090, Everett, WA 98206 U.S.A.

**For more information call:**

In the U.S.A. (800) 443-5853

In Canada (800) 36-FLUKE

From other countries +1 (425) 446-5500

[www.fluke.com](http://www.fluke.com)

©2025 Fluke Corporation.

Specifications subject to change without notice.  
03/2025

**Modification of this document is not permitted  
without written permission from Fluke  
Corporation.**