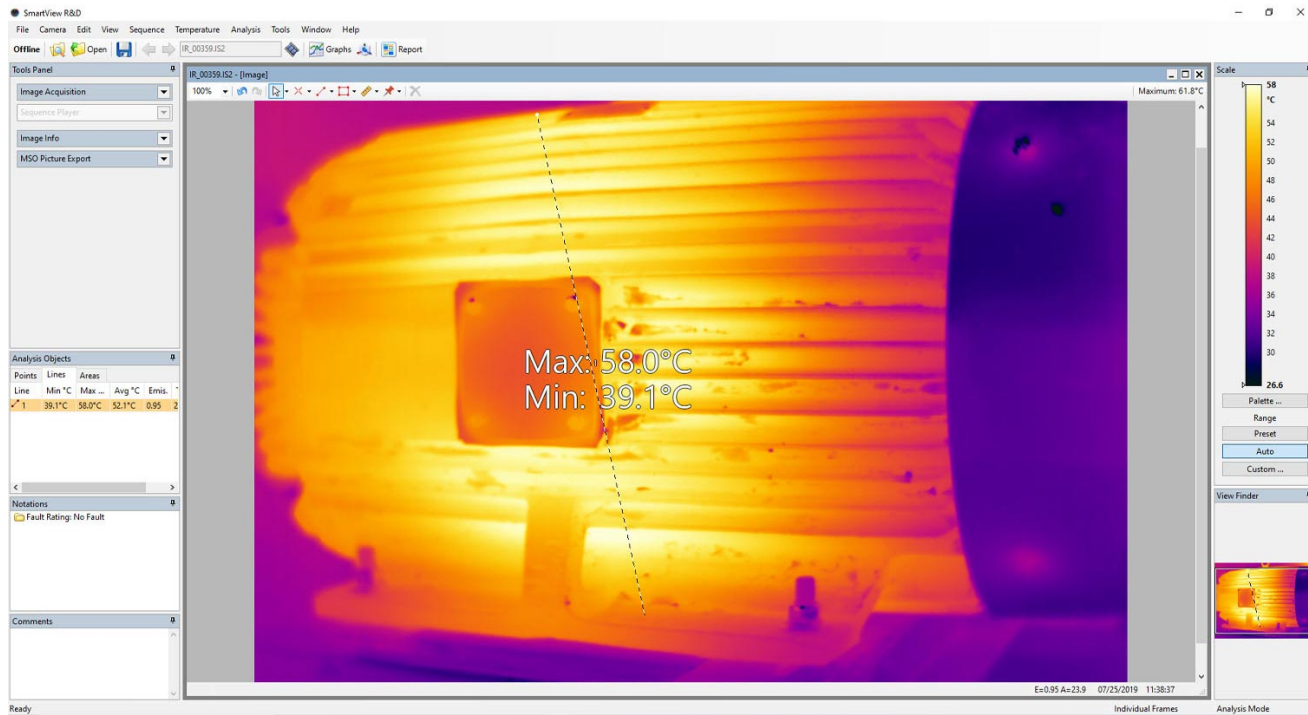



FLUKE®

TECHNICAL DATA

Fluke SmartView R&D Thermal Imaging Software





Foirtive™ User
Fortive™
WPBCSW-X38XG7-HZX3XE-632JYW-ER0DC6-9SRD

SmartView R&D

Version: 7.0
Build: 7.5.151

RSE, Tix500

Fluke Corporation
www.fluke.com
support@fluke.com
Copyright ©2019 Fluke Corporation

Powered by GRAYESS Inc.
www.grayess.com

GRAYESS®

Key features

- Customizable reports - display the information you need based on your application
- Real time radiometric data streaming capability
- Data trending and time plots
- Advanced analysis features; Spot measures, lines/profiles, area/histograms, hot/cold markers, rulers, adjustable emissivity by object, and more
- Easy to use file management

Product overview: Fluke SmartView R&D Thermal Imaging Software

SmartView R&D provides accurate and detailed analysis for professional thermographers from research and development to high end utilities and preventive maintenance programs. Users can quickly and easily create customized reports to share with the team and stream and analyze data directly from their thermal camera to a computer.

Fluke. *Keeping your world up and running.®*

Fluke Corporation

PO Box 9090, Everett, WA 98206 U.S.A.

For more information call:

In the U.S.A. (800) 443-5853

In Europe/M-East/Africa +31 (0)40 267 5100

In Canada (800)-36-FLUKE

From other countries +1 (425) 446-5500

Fluke Electronics (Malaysia) Sdn Bhd

Suite D-3A-4, Block D

SouthGage Commercial Centre, No2

Jalan Dua Off Jln Chan Sow Lin

55200 KL

Malaysia

Email: info.asean@fluke.com

www.fluke.com/my

©2025 Fluke Corporation. Specifications subject to change without notice.

04/2025

Modification of this document is not permitted without written permission from Fluke Corporation.