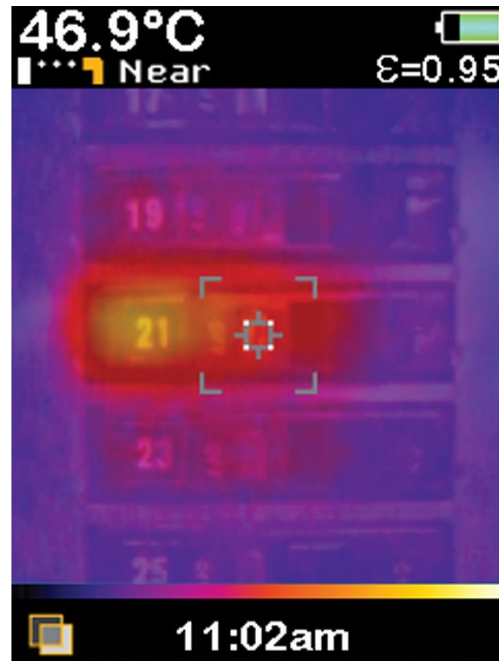


TECHNICAL DATA

Fluke VT04 visual IR thermometer maintenance combo kit







Key features

- **Unlimited applications** – See [data sheet](#) for powerful applications and details
- **Built-in digital camera** – Every Fluke Visual IR Thermometer has a built-in digital camera
- **Exclusive thermal heat map blending overlay** – With one button, blend digital images and thermal heat maps to instantly show the exact location of the issue
- **No training required** - Fully automatic with built-in intelligence
- **True pocket size design** – Less than half the size of an average infrared camera
- **SmartView® reporting software** – Store up to 10,000 images per Gb on included SD card and make professional reports on included professional software
- **Automatic hot and cold spot trackers**
- **Breakthrough affordability** – Fraction of the cost of infrared cameras that require costly training and software
- **Powerful resolution with PyroBlend® Plus optics:**
 - Best-in-class field of view: 28 ° x 28 ° (40% wider for tight spaces)
 - 4 times sharper images
- **Alarm and time lapse features:**
 - **Hi/Lo temperature alarm** – Find hot spots in seconds with the alarm feature
 - **Time lapse image capture** – Automatically monitor equipment over time
 - **Automated monitoring alarm** – Automatically capture images after an alarm has been triggered

Product overview: Fluke VT04 visual IR thermometer

maintenance combo kit

Optimized for the world you work in, the VT04 Visual IR Thermometer Maintenance Kit includes:

- VT04 Visual IR Thermometer
- 1507 Insulation Tester

This kit:

- stretches your tool budget further
- adds infrared detection services to your business at breakthrough affordability
- adds infrared detection services to expand your business

The VT04 Visual IR Thermometer provides a built in digital camera with a thermal heat map overlay to detect hot and cold spots instantly. The VT04 eliminates the tedious task of recording multiple measurements manually.

See the Difference

Hot and cold spot trackers and temperature alarms help you measure with confidence knowing that you did not miss a hot or cold spot. In addition, the VT04:

- Requires no training
- Is designed to fit in your pocket
- Uncovers hidden issues instantly
- Documents needed repairs with a push of the button
- Includes professional [SmartView®](#) reporting software to communicate needed repairs

[Download 15 Powerful Applications for the Fluke Visual IR Thermometer](#)

The **Fluke 1507 Insulation Tester** is compact, rugged, reliable, and easy to use for professional insulation diagnostics. With its multiple test voltages, the 1507 is ideal for many troubleshooting, commissioning, and preventive maintenance applications. Additional features, like the remote probe on these tools, save both time and money when performing tests.

Stretch your dollar further, increase your productivity on the job and expand your business by documenting needed repairs with the VT04 Visual IR Thermometer Maintenance Kit.

View other VT04 combination kits: [VT04 Visual IR Thermometer Electrical Combo Kit](#) and the [VT04 Visual IR Thermometer HVAC Combo Kit](#).

1507 Insulation Resistance Tester features:

- Insulation test range:
 - 1507: 0.01 MΩ to 10 GΩ
- Insulation test voltages:
 - 1507: 50 V, 100 V, 250 V, 500 V, 1000 V
- Save both time and money with automatic calculation of Polarization Index and Dielectric Absorption Ratio
- Make repetitive tests simple and easy with the 1507's Compare (Pass/Fail) function
- Repetitive or hard-to-reach testing is easy with the remote test probe
- Live circuit detection prevents insulation test if voltage > 30 V is detected for added user protection

- Auto-discharge of capacitive voltage for added user protection
- AC/DC voltage: 0.1 V to 600 V
- 200 mA Continuity
- Resistance: 0.01 Ω to 20.00 k Ω
- Save battery power with auto power off
- Read measurements easily with large, backlit display
- CAT IV 600 V overvoltage category rating for added user protection
- Remote probe, test leads, probes and alligator clips included with each tester
- Accepts optional Fluke TPAK magnetic hanging system to free your hands for other work
- Our AA alkaline batteries (NEDA 15 A or IEC LR6) for at least 1000 insulation tests

Specifications: Fluke VT04 visual IR thermometer maintenance combo kit

Fluke VT04 Visual IR Thermometer

| Key Features | |
|--|---|
| Built-in digital camera | Yes |
| Thermal heat map overlay | Yes, five blending modes |
| Image optics system | PyroBlend® Plus optic *4x sharper image than VT02 |
| Field of view | 28° x 28° |
| Hi-Lo temperature alarms | Yes |
| Time lapse image capture | Yes |
| Auto-monitor alarm | Yes |
| Battery type | Li-Ion rechargeable |
| Training | No training required |
| Ergonomics | Slim pocket-sized design |
| Hot and cold markers | Yes |
| General Features | |
| Battery life | Eight (8) hours |
| Temperature measurement range | -10°C to +250°C (14°F to 482°F) |
| Temperature measurement accuracy | ±2°C or ±2% |
| Temperature measurement | Yes, centerpoint |
| Storage medium (micro SD card) | Stores up to 10,000 images per Gb (4 Gb card included) |
| Infrared spectral band | 6.5 μm to 14 μm |
| Level and span | Auto |
| Focus mechanism | Focus free, no training required with built-in intelligence |
| Focus options-exclusive user selectable NEAR/FAR options | NEAR < 23 cm (9 in); FAR > 23 cm (9 in) |

| | |
|-----------------------|--|
| Dimensions | 21 x 7.5 x 5.5 cm (8.3 x 3 x 2.2 in); < 300 g (10.5 oz) |
| File format | .is2 format saved to SD card. User can create professional reports or export images in SmartView (BMP, DIB, GIF, SPE, FIF, SPEG, JPG, PNG, TIF and TIFF) |
| Safety and compliance | CFR47: 2009 Class A. Part 15 subpart B; CE: EN 61326:2006; IEC/EN 61010-1:2010 |
| Warranty | Two (2) years |

Fluke 1507 Insulation Resistance Testers

| AC/DC Voltage Measurement | | |
|---|---|-----------------|
| Accuracy | Range | 600.0 V |
| | Resolution | 0.1 V |
| | 50 Hz to 400 Hz $\pm(\% \text{ of Rdg} + \text{Digits})$ | $\pm(2\% + 3)$ |
| Input impedance | 3 M Ω (nominal), < 100 pF | |
| Common mode rejection ratio (1 k Ω unbalanced) | > 60 dB at DC, 50 or 60 Hz | |
| Overload protection | 600 V rms or DC | |
| Earth Bond Resistance Measurement | | |
| Range/Resolution | 20.00 Ω | 0.01 Ω |
| | 200.0 Ω | 0.1 Ω |
| | 2000 Ω | 1.0 Ω |
| | 20.00 k Ω | 0.01 k Ω |
| Accuracy | $\pm(1.5\% + 3)$ | |
| Overload protection | 2 V rms or DC | |
| Open circuit test voltage | > 4.0 V, < 8 V | |
| Short circuit current | > 200.0 mA | |
| Insulation Specifications | | |
| Measurement range | 0.01 M Ω to 10 G Ω | |
| Test voltage | 50 V, 100 V, 250 V, 500 V, 1000 V | |
| Test voltage accuracy | +20%, - 0% | |
| Short circuit current | 1 mA nominal | |
| Auto discharge | Discharge time < 0.5 second for C = 1 μ F or less | |
| Live circuit indicator | Inhibit test if terminal voltage > 30 V prior to initialization of test | |
| Maximum capacitive load | Operable with up to 1 μ F load | |

| | | |
|---|---|---|
| Measure accuracy | 50 V | $\pm(3\% + 5)$ |
| | 100 V | $\pm(3\% + 5)$ |
| | 250 V | $\pm(1.5\% + 5)$ |
| | 500 V | $\pm(1.5\% + 5)$ |
| | 1000 V | $\pm(1.5\% + 5)$ to 2000 M Ω , $\pm(10\% + 3)$ above 2000 M Ω |
| General Specifications | | |
| Maximum voltage applied to any terminal | 600 V AC rms or DC | |
| Storage temperature | -40°C to 60°C (-40°F to 140°F) | |
| Operating temperature | -20°C to 55°C (-4°F to 131°F) | |
| Temperature coefficient | 0.05 x (specified accuracy) per°C for temperatures < 18°C or > 28°C (< 64°F or > 82°F) | |
| Relative humidity | 0% to 95% @ 10°C to 30°C (50°F to 86°F) | |
| | 0% to 75% @ 30°C to 40°C (86°F to 104°F) | |
| | 0% to 40% @ 40°C to 55°C (104°F to 131°F) | |
| Vibration | Random, 2 g, 5-500 Hz per MIL-PRF-28800F, Class 2 instrument | |
| Shock | 1 meter drop per IEC 61010-1 2nd Edition (1 meter drop test, six sides, oak floor) | |
| Electromagnetic compatibility | In an RF field of 3 V/M, accuracy = specified accuracy (EN 61326-1:1997) | |
| Safety | Complies with ANSI/ISA 82.02.01 (61010-1) 2004, CAN/CSA-C22.2 NO. 61010-1-04, and IEC/EN 61010-1 2nd Edition for measurement category IV 600 V (CAT IV) | |
| Certifications | CSA per standard CSA/CAN C22.2 No. 61010.1-04; TUV per standard IEC/EN 61010-1 2nd Edition | |
| Baeries | Four AA baeries (NEDA 15A or IEC LR6) | |
| Baery life | Insulation test use | Tester can perform at least 1000 insulation tests with fresh alkaline baeries at room temperature. These are standard tests of 1000 V into 1 M Ω with a duty cycle of 5 seconds on and 25 seconds off. |
| | Resistance measurements | Tester can perform at least 2500 earth bond resistance measurements with fresh alkaline baeries at room temperature. These are standard tests of 1 Ω with a duty cycle of 5 seconds on and 25 seconds off. |
| Size (H x W x L) | 5.0 x 10.0 x 20.3 cm (1.97 x 3.94 x 8.00 in) | |
| Weight | 550 g (1.2 lb) | |
| IP rating | IP40 | |
| Altitude | Operating | 2000 m CAT IV 600 V, 3000 m CAT III 600 V |
| | Non-operating (storage) | 12,000 m |
| Over-range capability | 110% of range | |



| | |
|----------------------|---|
| Included accessories | TL224 Test Leads, TP74 Test Probes, clips PN 1958654 (red) and PN 1958646 (black), holster and remote probe |
|----------------------|---|

Ordering information



FLK-VT04-M-Kit

Fluke VT04 Visual IR Thermometer Maintenance Combo Kit

Includes:

VT04 Visual IR Thermometer includes:

- Hard case*
- Micro-SD card
- Micro-SD conversion adapter to standard
- Li-Ion rechargeable battery
- Printed Quick Start guides (English, French, German, Spanish, Simplified Chinese)

Available for free download*:

- SmartView® analysis and reporting software »
- Manual »
- Quick Start guide »

*To lower pricing on the VT04, future inventory no longer includes the lanyard, the SmartView® software CD, and the Manual CD.

1507 Insulation Tester includes:

- Remote probe
- Test leads
- Test probes
- Alligator clips
- User documentation



Fluke. *Keeping your world up and running.®*

Fluke (UK) Ltd.
52 Hurricane Way
Norwich, Norfolk
NR6 6JB
United Kingdom
Tel.: +44 (0)20 7942 0708
E-mail: cs.uk@fluke.com
www.fluke.com

©2025 Fluke Corporation. All rights reserved.
Data subject to alteration without notice.
04/2025

**Modification of this document is not permitted
without written permission from Fluke
Corporation.**