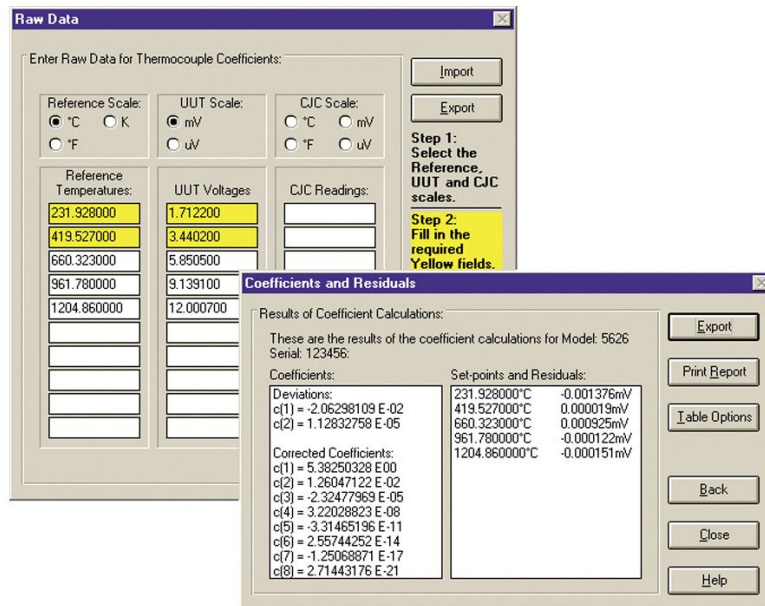


# 9933 TableWare v3 - Temperature Calibration Software



## Key features

- Uses manually entered data for calculations provided by MET/TEMP II.
- Compatible with Windows 7, 8, and 10 operating systems.

## Product overview: 9933 TableWare v3 - Temperature Calibration Software

TableWare calculates coefficients for RTDs, thermistors and thermocouples. It uses ITS-90, IPTS-68, Callendar-Van Dusen and polynomial equations. TableWare also generates temperature vs. resistance, temperature vs. ratio and temperature vs. EMF tables.

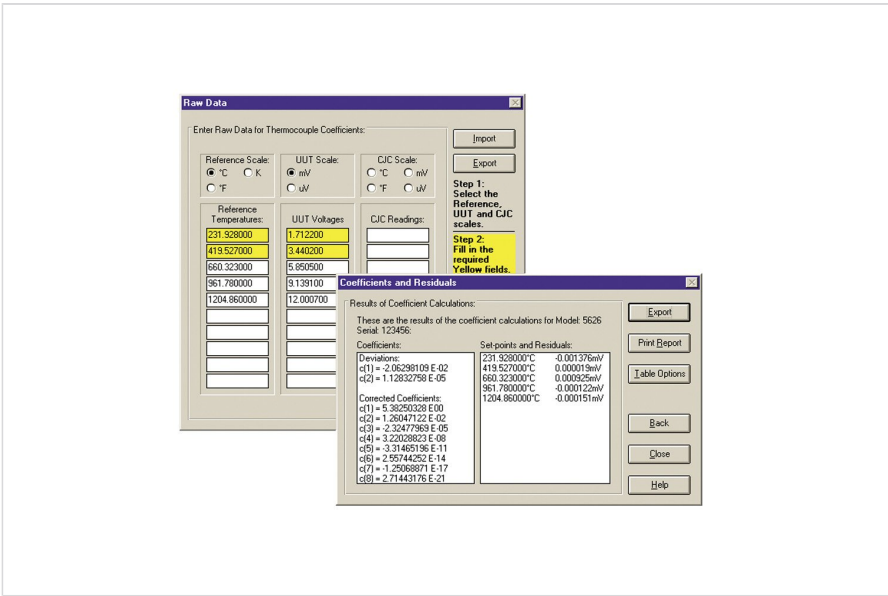
Simply enter or import the raw resistance or voltage data from your calibrations. TableWare generates coefficients, calculates residual values and generates useful tables.

Tables and coefficients can be exported to a text file for analysis in other software packages.

Also, TableWare allows you to generate tables from coefficients that can be entered manually. No raw data is required!

TableWare v3.0 is compatible with Microsoft Windows 7, 8, and 10 operating systems.

# Ordering information



## 9933-V3

TableWare Coefficient Calculation and Table Generation Software

**Fluke.** *Keeping your world up and running.®*

**Fluke (UK) Ltd.**  
52 Hurricane Way  
Norwich, Norfolk  
NR6 6JB  
United Kingdom  
Tel.: +44 (0)20 7942 0708  
E-mail: [cs.uk@fluke.com](mailto:cs.uk@fluke.com)  
[www.fluke.com](http://www.fluke.com)

©2025 Fluke Corporation. All rights reserved.  
Data subject to alteration without notice.  
03/2025

**Modification of this document is not permitted  
without written permission from Fluke  
Corporation.**