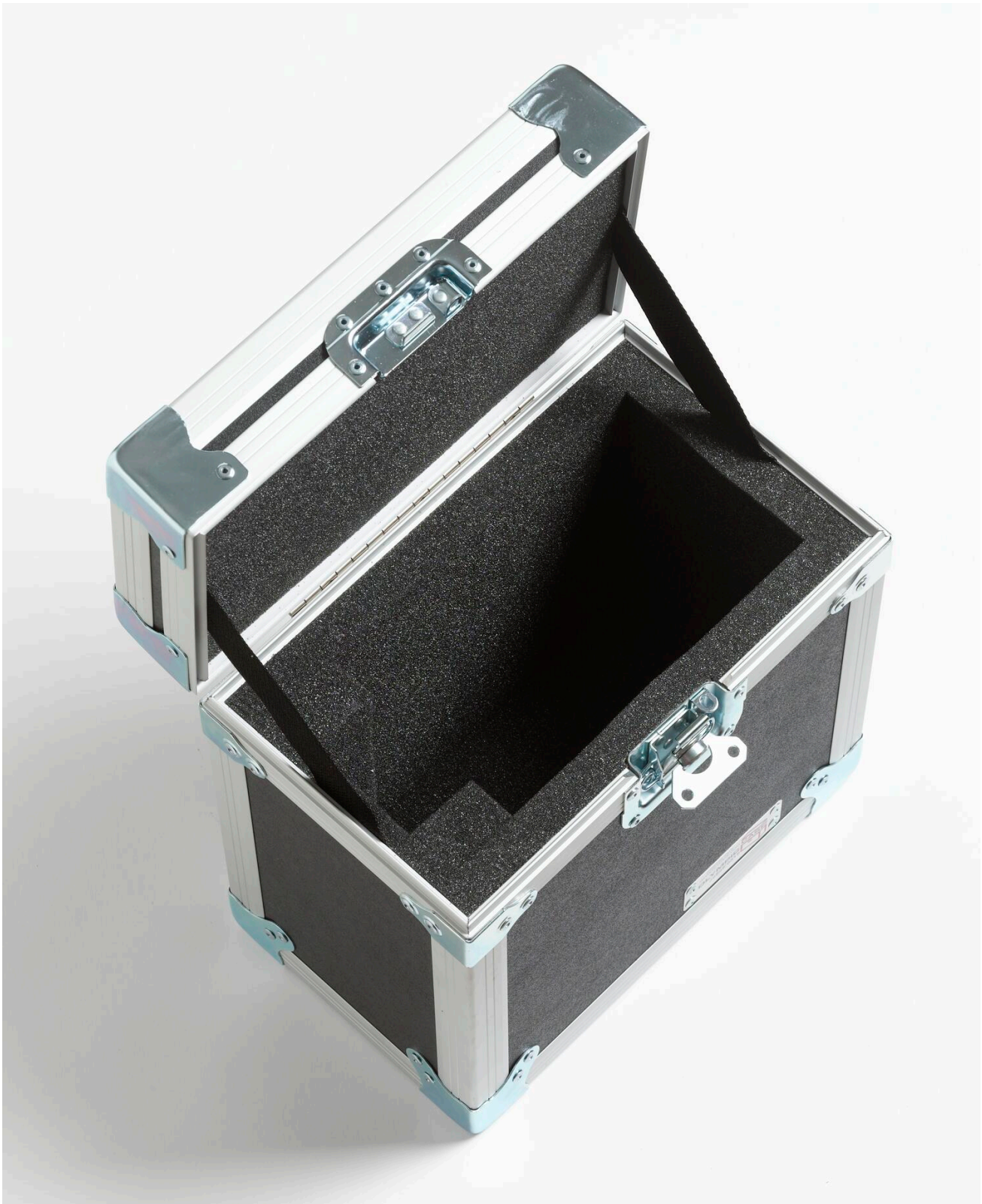


TECHNICAL DATA

9316 | Rugged Carrying Case : 9103





Product overview: 9316 | Rugged Carrying Case : 9103

- Rugged carrying case for the 9103 Dry-Well Calibrator
- Laminated birch or lightweight composite panels

- Recessed steel handles and latches
- Foam lined for impact protection

Ordering information



9316

Rugged Carrying Case : 9103

Fluke. *Keeping your world up and running.®*

Fluke Corporation

PO Box 9090, Everett, WA 98206 U.S.A.

For more information call:

In the U.S.A. (800) 443-5853

In Europe/M-East/Africa

+31 (0)40 267 5100

In Canada (800)-36-FLUKE

From other countries +1 (425) 446-5500

BUT. FLUKE SOUTH EAST ASIA PTE LTD

Menera Satu Sentra Kelapa Gading #06-05

Jl. Bulevar Kelapa Gading Kav. LA# No. 1

Summarecon Kelapa Gading

Jakarta Utara 14240

Indonesia

Tel: +62 21 2938 5922

Email: info.asean@fluke.com

www.fluke.com/id-en

©2025 Fluke Corporation. Specifications subject to change without notice.

03/2025

Modification of this document is not permitted without written permission from Fluke Corporation.