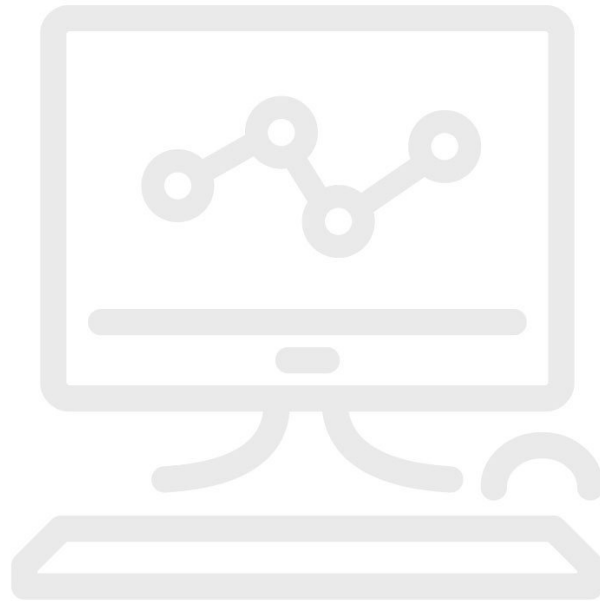


## TECHNICAL DATA

# Data Recovery from Corrupted Database



## Product overview: Data Recovery from Corrupted Database

MET/CAL® *Plus* calibration management software is quite robust; however, as with any software application, the possibility exists for corruption of data. Our MS-DBFIX service lets us repair damaged databases in most cases, and return your data ready to use.

To accomplish a recovery, the database file and log file is sent to the Fluke Calibration MET/SUPPORT group. Using special tools and utilities, we repair the damage (if we can) and return the data ready to use. When you purchase MS-DBFIX, MET/SUPPORT will use our best efforts to retrieve all, or as much as of the data possible, but no guarantee of any recovery will be made. Fluke Calibration will charge for this service whether or not any data recovery is actually successful.

This service may be purchased separately. It also is included in the [MET/SUPPORT Gold](#) Priority Support program for MET/CAL® *Plus*.

## Ordering information



### **MS-DBFIX**

Data Recovery from Corrupted Database

---

**Fluke.** *Keeping your world up and running.®*

**Fluke (UK) Ltd.**  
52 Hurricane Way  
Norwich, Norfolk  
NR6 6JB  
United Kingdom  
Tel.: +44 (0)20 7942 0708  
E-mail: [cs.uk@fluke.com](mailto:cs.uk@fluke.com)  
[www.fluke.com/en-gb](http://www.fluke.com/en-gb)

©2025 Fluke Corporation. All rights reserved.  
Data subject to alteration without notice.  
04/2025

**Modification of this document is not permitted  
without written permission from Fluke  
Corporation.**