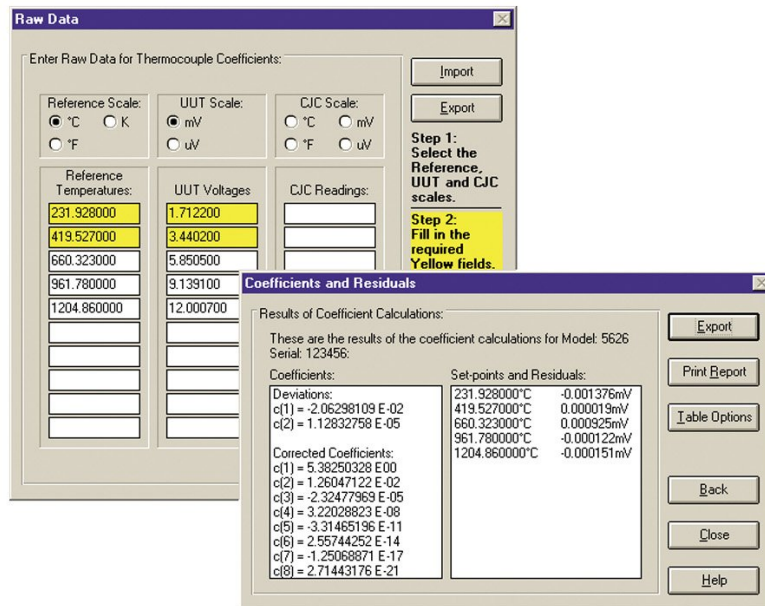


9933 TableWare v3 - Temperature Calibration Software



Key features

- Uses manually entered data for calculations provided by MET/TEMP II.
- Compatible with Windows 7, 8, and 10 operating systems.

Product overview: 9933 TableWare v3 - Temperature Calibration Software

TableWare calculates coefficients for RTDs, thermistors and thermocouples. It uses ITS-90, IPTS-68, Callendar-Van Dusen and polynomial equations. TableWare also generates temperature vs. resistance, temperature vs. ratio and temperature vs. EMF tables.

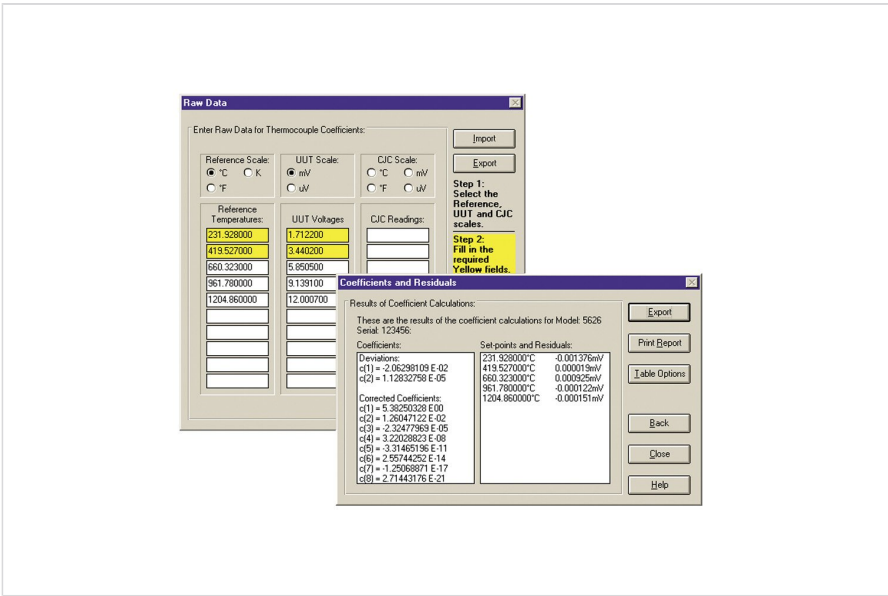
Simply enter or import the raw resistance or voltage data from your calibrations. TableWare generates coefficients, calculates residual values and generates useful tables.

Tables and coefficients can be exported to a text file for analysis in other software packages.

Also, TableWare allows you to generate tables from coefficients that can be entered manually. No raw data is required!

TableWare v3.0 is compatible with Microsoft Windows 7, 8, and 10 operating systems.

Ordering information



9933-V3

TableWare Coefficient Calculation and Table Generation Software

Fluke. *Keeping your world up and running.®*

Fluke (UK) Ltd.
52 Hurricane Way
Norwich, Norfolk
NR6 6JB
United Kingdom
Tel.: +44 (0)20 7942 0708
E-mail: cs.uk@fluke.com
www.fluke.com/en-gb

©2025 Fluke Corporation. All rights reserved.
Data subject to alteration without notice.
03/2025

**Modification of this document is not permitted
without written permission from Fluke
Corporation.**