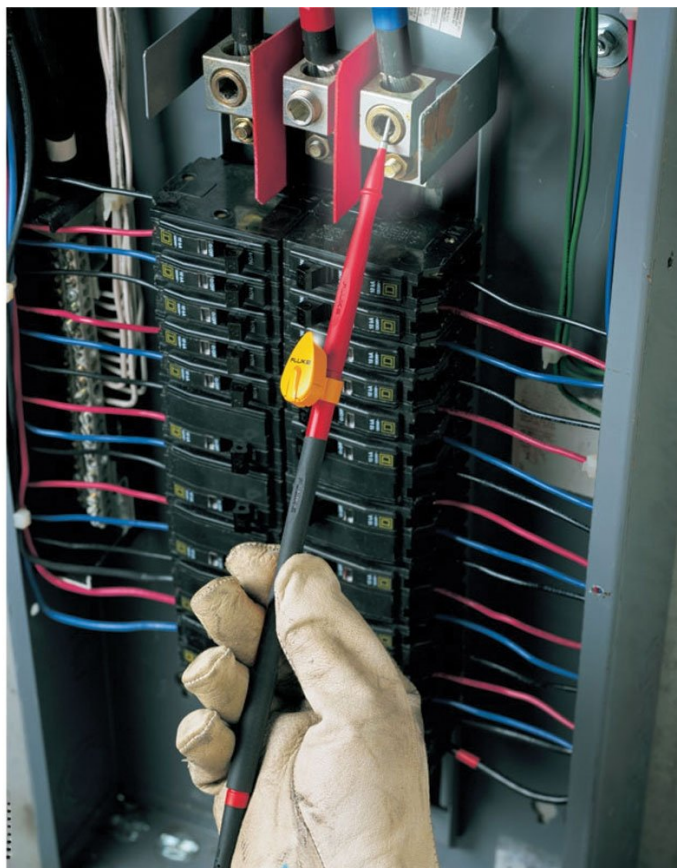


TECHNICAL DATA

# Fluke L210 Probe Light Kit



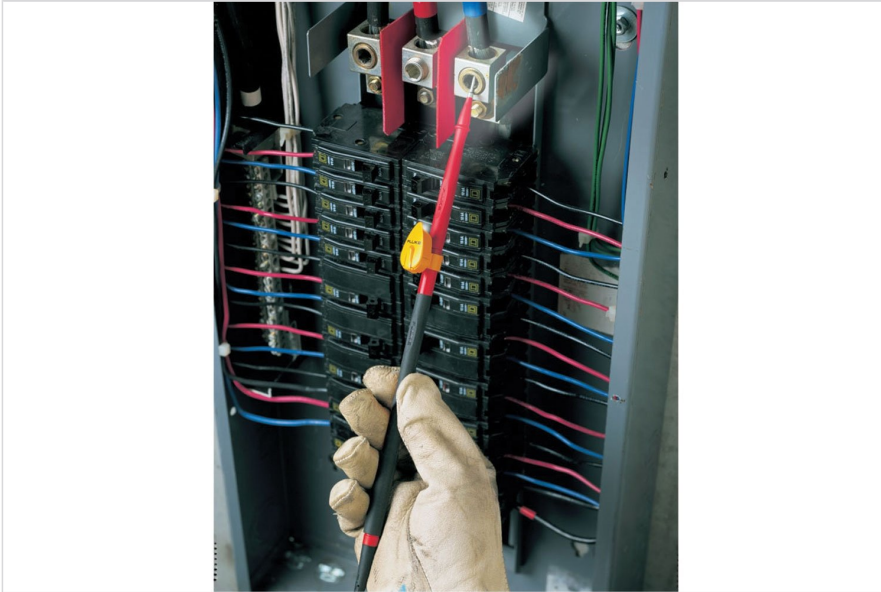
## Key features

- Bright white LED illuminates contact area
- 8" probe extenders keep hands away from live circuits
- Extender fits between modular test probe and test lead
- Small, rugged light frees both hands for work
- 120 hours of battery life
- Uses 2 3-volt watch batteries

## Product overview: Fluke L210 Probe Light Kit

L210 Probe Light and Probe Extenders

## Ordering information



### **Fluke L210**

---

Includes L200 Probe Light and TP280 Test Probe Extenders

---



**Fluke.** *Keeping your world up and running.®*

**Fluke (UK) Ltd.**  
52 Hurricane Way  
Norwich, Norfolk  
NR6 6JB  
United Kingdom  
Tel.: +44 (0)20 7942 0708  
E-mail: [cs.uk@fluke.com](mailto:cs.uk@fluke.com)  
[www.fluke.com/en-gb](http://www.fluke.com/en-gb)

©2025 Fluke Corporation. All rights reserved.  
Data subject to alteration without notice.  
04/2025

**Modification of this document is not permitted  
without written permission from Fluke  
Corporation.**