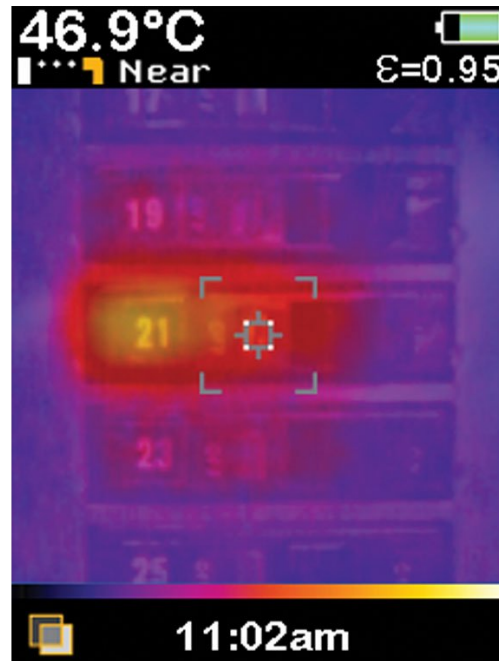


## TECHNICAL DATA

# Fluke VT04 visual IR thermometer maintenance combo kit







## Key features

- **Unlimited applications** – See [data sheet](#) for powerful applications and details
- **Built-in digital camera** – Every Fluke Visual IR Thermometer has a built-in digital camera
- **Exclusive thermal heat map blending overlay** – With one button, blend digital images and thermal heat maps to instantly show the exact location of the issue
- **No training required** - Fully automatic with built-in intelligence
- **True pocket size design** – Less than half the size of an average infrared camera
- **SmartView® reporting software** – Store up to 10,000 images per Gb on included SD card and make professional reports on included professional software
- **Automatic hot and cold spot trackers**
- **Breakthrough affordability** – Fraction of the cost of infrared cameras that require costly training and software
- **Powerful resolution with PyroBlend® Plus optics:**
  - Best-in-class field of view: 28 ° x 28 ° (40% wider for tight spaces)
  - 4 times sharper images
- **Alarm and time lapse features:**
  - **Hi/Lo temperature alarm** – Find hot spots in seconds with the alarm feature
  - **Time lapse image capture** – Automatically monitor equipment over time
  - **Automated monitoring alarm** – Automatically capture images after an alarm has been triggered

## Product overview: Fluke VT04 visual IR thermometer

## maintenance combo kit

**Optimized for the world you work in, the VT04 Visual IR Thermometer Maintenance Kit includes:**

- VT04 Visual IR Thermometer
- 1507 Insulation Tester

### **This kit:**

- stretches your tool budget further
- adds infrared detection services to your business at breakthrough affordability
- adds infrared detection services to expand your business

The VT04 Visual IR Thermometer provides a built in digital camera with a thermal heat map overlay to detect hot and cold spots instantly. The VT04 eliminates the tedious task of recording multiple measurements manually.

### **See the Difference**

Hot and cold spot trackers and temperature alarms help you measure with confidence knowing that you did not miss a hot or cold spot. In addition, the VT04:

- Requires no training
- Is designed to fit in your pocket
- Uncovers hidden issues instantly
- Documents needed repairs with a push of the button
- Includes professional [SmartView@](#) reporting software to communicate needed repairs

[Download 15 Powerful Applications for the Fluke Visual IR Thermometer](#)

The **Fluke 1507 Insulation Tester** is compact, rugged, reliable, and easy to use for professional insulation diagnostics. With its multiple test voltages, the 1507 is ideal for many troubleshooting, commissioning, and preventive maintenance applications. Additional features, like the remote probe on these tools, save both time and money when performing tests.

Stretch your dollar further, increase your productivity on the job and expand your business by documenting needed repairs with the VT04 Visual IR Thermometer Maintenance Kit.

View other VT04 combination kits: [VT04 Visual IR Thermometer Electrical Combo Kit](#) and the [VT04 Visual IR Thermometer HVAC Combo Kit](#).

### **1507 Insulation Resistance Tester features:**

- Insulation test range:
  - 1507: 0.01 MΩ to 10 GΩ
- Insulation test voltages:
  - 1507: 50 V, 100 V, 250 V, 500 V, 1000 V
- Save both time and money with automatic calculation of Polarization Index and Dielectric Absorption Ratio
- Make repetitive tests simple and easy with the 1507's Compare (Pass/Fail) function
- Repetitive or hard-to-reach testing is easy with the remote test probe
- Live circuit detection prevents insulation test if voltage > 30 V is detected for added user protection

- Auto-discharge of capacitive voltage for added user protection
- AC/DC voltage: 0.1 V to 600 V
- 200 mA Continuity
- Resistance: 0.01  $\Omega$  to 20.00 k $\Omega$
- Save battery power with auto power off
- Read measurements easily with large, backlit display
- CAT IV 600 V overvoltage category rating for added user protection
- Remote probe, test leads, probes and alligator clips included with each tester
- Accepts optional Fluke TPAK magnetic hanging system to free your hands for other work
- Our AA alkaline batteries (NEDA 15 A or IEC LR6) for at least 1000 insulation tests

## Specifications: Fluke VT04 visual IR thermometer maintenance combo kit

### Fluke VT04 Visual IR Thermometer

Key Features	
Built-in digital camera	Yes
Thermal heat map overlay	Yes, five blending modes
Image optics system	PyroBlend® Plus optic *4x sharper image than VT02
Field of view	28° x 28°
Hi-Lo temperature alarms	Yes
Time lapse image capture	Yes
Auto-monitor alarm	Yes
Battery type	Li-Ion rechargeable
Training	No training required
Ergonomics	Slim pocket-sized design
Hot and cold markers	Yes
General Features	
Battery life	Eight (8) hours
Temperature measurement range	-10°C to +250°C (14°F to 482°F)
Temperature measurement accuracy	±2°C or ±2%
Temperature measurement	Yes, centerpoint
Storage medium (micro SD card)	Stores up to 10,000 images per Gb (4 Gb card included)
Infrared spectral band	6.5 $\mu\text{m}$ to 14 $\mu\text{m}$
Level and span	Auto
Focus mechanism	Focus free, no training required with built-in intelligence
Focus options-exclusive user selectable NEAR/FAR options	NEAR < 23 cm (9 in); FAR > 23 cm (9 in)

Dimensions	21 x 7.5 x 5.5 cm (8.3 x 3 x 2.2 in); < 300 g (10.5 oz)
File format	.is2 format saved to SD card. User can create professional reports or export images in SmartView (BMP, DIB, GIF, SPE, FIF, SPEG, JPG, PNG, TIF and TIFF)
Safety and compliance	CFR47: 2009 Class A. Part 15 subpart B; CE: EN 61326:2006; IEC/EN 61010-1:2010
Warranty	Two (2) years

## Fluke 1507 Insulation Resistance Testers

AC/DC Voltage Measurement		
Accuracy	<b>Range</b>	600.0 V
	Resolution	0.1 V
	50 Hz to 400 Hz $\pm(\% \text{ of Rdg} + \text{Digits})$	$\pm(2\% + 3)$
Input impedance	3 M $\Omega$ (nominal), < 100 pF	
Common mode rejection ratio (1 k $\Omega$ unbalanced)	> 60 dB at DC, 50 or 60 Hz	
Overload protection	600 V rms or DC	
Earth Bond Resistance Measurement		
Range/Resolution	<b>20.00 <math>\Omega</math></b>	0.01 $\Omega$
	200.0 $\Omega$	0.1 $\Omega$
	2000 $\Omega$	1.0 $\Omega$
	20.00 k $\Omega$	0.01 k $\Omega$
Accuracy	$\pm(1.5\% + 3)$	
Overload protection	2 V rms or DC	
Open circuit test voltage	> 4.0 V, < 8 V	
Short circuit current	> 200.0 mA	
Insulation Specifications		
Measurement range	0.01 M $\Omega$ to 10 G $\Omega$	
Test voltage	50 V, 100 V, 250 V, 500 V, 1000 V	
Test voltage accuracy	+20%, - 0%	
Short circuit current	1 mA nominal	
Auto discharge	Discharge time < 0.5 second for C = 1 $\mu$ F or less	
Live circuit indicator	Inhibit test if terminal voltage > 30 V prior to initialization of test	
Maximum capacitive load	Operable with up to 1 $\mu$ F load	

Measure accuracy	<b>50 V</b>	$\pm(3\% + 5)$
	100 V	$\pm(3\% + 5)$
	250 V	$\pm(1.5\% + 5)$
	500 V	$\pm(1.5\% + 5)$
	1000 V	$\pm(1.5\% + 5)$ to 2000 M $\Omega$ , $\pm(10\% + 3)$ above 2000 M $\Omega$
<b>General Specifications</b>		
Maximum voltage applied to any terminal	600 V AC rms or DC	
Storage temperature	-40°C to 60°C (-40°F to 140°F)	
Operating temperature	-20°C to 55°C (-4°F to 131°F)	
Temperature coefficient	0.05 x (specified accuracy) per°C for temperatures < 18°C or > 28°C (< 64°F or > 82°F)	
Relative humidity	0% to 95% @ 10°C to 30°C (50°F to 86°F)	
	0% to 75% @ 30°C to 40°C (86°F to 104°F)	
	0% to 40% @ 40°C to 55°C (104°F to 131°F)	
Vibration	Random, 2 g, 5-500 Hz per MIL-PRF-28800F, Class 2 instrument	
Shock	1 meter drop per IEC 61010-1 2nd Edition (1 meter drop test, six sides, oak floor)	
Electromagnetic compatibility	In an RF field of 3 V/M, accuracy = specified accuracy (EN 61326-1:1997)	
Safety	Complies with ANSI/ISA 82.02.01 (61010-1) 2004, CAN/CSA-C22.2 NO. 61010-1-04, and IEC/EN 61010-1 2nd Edition for measurement category IV 600 V (CAT IV)	
Certifications	CSA per standard CSA/CAN C22.2 No. 61010.1-04; TUV per standard IEC/EN 61010-1 2nd Edition	
Baeries	Four AA baeries (NEDA 15A or IEC LR6)	
Baery life	<b>Insulation test use</b>	Tester can perform at least 1000 insulation tests with fresh alkaline baeries at room temperature. These are standard tests of 1000 V into 1 M $\Omega$ with a duty cycle of 5 seconds on and 25 seconds off.
	Resistance measurements	Tester can perform at least 2500 earth bond resistance measurements with fresh alkaline baeries at room temperature. These are standard tests of 1 $\Omega$ with a duty cycle of 5 seconds on and 25 seconds off.
Size (H x W x L)	5.0 x 10.0 x 20.3 cm (1.97 x 3.94 x 8.00 in)	
Weight	550 g (1.2 lb)	
IP rating	IP40	
Altitude	<b>Operating</b>	2000 m CAT IV 600 V, 3000 m CAT III 600 V
	Non-operating (storage)	12,000 m
Over-range capability	110% of range	



Included accessories	TL224 Test Leads, TP74 Test Probes, clips PN 1958654 (red) and PN 1958646 (black), holster and remote probe
----------------------	---



## Ordering information



### **FLK-VT04-M-Kit**

Fluke VT04 Visual IR Thermometer Maintenance Combo Kit

Includes:

VT04 Visual IR Thermometer includes:

- Hard case\*
- Micro-SD card
- Micro-SD conversion adapter to standard
- Li-Ion rechargeable battery
- Printed Quick Start guides (English, French, German, Spanish, Simplified Chinese)

Available for free download\*:

- SmartView® analysis and reporting software »
- Manual »
- Quick Start guide »

\*To lower pricing on the VT04, future inventory no longer includes the lanyard, the SmartView® software CD, and the Manual CD.

1507 Insulation Tester includes:

- Remote probe
- Test leads
- Test probes
- Alligator clips
- User documentation



**Fluke.** *Keeping your world up and running.®*

**Fluke Corporation**  
PO Box 9090, Everett, WA 98206 U.S.A.

**For more information call:**  
In the U.S.A. (800) 443-5853  
In Canada (800) 36-FLUKE  
From other countries +1 (425) 446-5500  
[www.fluke.com](http://www.fluke.com)

©2025 Fluke Corporation.  
Specifications subject to change without notice.  
04/2025

**Modification of this document is not permitted  
without written permission from Fluke  
Corporation.**