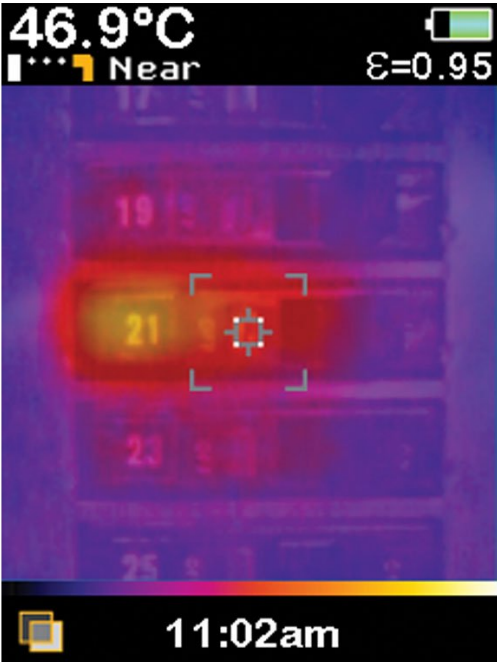


TECHNICAL DATA

Fluke VT04 visual IR thermometer HVAC combo kit



Key features

VT04 Visual IR Thermometer features:

- **Unlimited applications** – See [data sheet](#) for powerful applications and details
- **Built-in digital camera** – Every Fluke Visual IR Thermometer has a built-in digital camera
- **Exclusive thermal heat map blending overlay** – With one button, blend digital images and thermal heat maps to instantly show the exact location of the issue
- **No training required** - Fully automatic with built-in intelligence
- **True pocket size design** – Less than half the size of an average infrared camera
- **SmartView® reporting software** – Store up to 10,000 images per Gb on included SD card and make professional reports on included professional software
- **Automatic hot and cold spot trackers**
- **Breakthrough affordability** – Fraction of the cost of infrared cameras that require costly training and software
- **Powerful resolution with PyroBlend® Plus optics:**
 - Best-in-class field of view: 28 ° x 28 ° (40% wider for tight spaces)
 - 4 times sharper images
- **Alarm and time lapse features:**
 - **Hi/Lo temperature alarm**– Find hot spots in seconds with the alarm feature
 - **Time lapse image capture**– Automatically monitor equipment over time
 - **Automated monitoring alarm** – Automatically capture images after an alarm has been triggered

902 HVAC Clamp Meter features:

- Designed for HVAC applications with capacitance, DC Current (μ A), and temperature measurements
- Small body and jaws fit perfectly in your hand and into tight places
- Handy 'Display Hold' button keeps measurements on the display
- Meter controls are positioned so current measurements can be done with one hand (index finger on clamp opening lever and thumb on rotary switch)
- Large, backlit display is easy-to-see in less than ideal conditions
- Auto shut-off maximizes battery life so the meter works when you need it
- Three year warranty

116 Digital Multimeter features:

- Built-in thermometer for HVAC applications
- Microamps to test flame sensors
- Low input impedance: helps prevent false readings due to ghost voltage
- Large white LED backlight to work in poorly lit areas
- Resistance, continuity, frequency and capacitance
- Min/Max/Average with elapsed time to record signal fluctuations
- Compact ergonomic design for one-handed operation
- Compatible with optional magnetic hanger (ToolPak™)
- CAT III 600 V safety rated

Product overview: Fluke VT04 visual IR thermometer HVAC combo kit

Optimized for the world you work in, the VT04 Visual IR Thermometer HVAC Combo Kit includes:

- VT04 Visual IR Thermometer
- 902 HVAC Clamp Meter
- 116 Digital Multimeter



This kit is ideal for HVAC professionals and:

- stretches your tool budget further
- is optimized to meet the demands of troubleshooting HVAC systems at breakthrough affordability
- adds infrared detection services to your business to expand your business

The VT04 Visual IR Thermometer provides a built in digital camera with a thermal heat map overlay to detect hot and cold spots instantly. The VT04 eliminates the tedious task of recording multiple measurements manually.

See the Difference

Hot and cold spot trackers and temperature alarms help you measure with confidence, knowing that you did not miss a hot or cold spot. In addition, the VT04:

- Requires no training
- Is designed to provide powerful infrared detection on the go
- Uncovers hidden issues instantly
- Documents needed repairs with a push of the button
- Includes professional [SmartView®](#) reporting software to communicate needed repairs

[Download 15 powerful applications for the fluke Visual IR Thermometer](#)

The **902 HVAC Clamp Meter** delivers the utility and function needed to do jobs safely and accurately including True RMS technology, continuity, and a k type thermocouple. Small body and jaws fit perfectly in your hand and into tight places, and a convenient thumb dial allows you to easily navigate between settings.

The **Fluke 116 Digital Multimeter** is a must have for HVAC professionals with everything you need in an HVAC meter, including AutoV/LoZ function to prevent false readings caused by ghost voltage and microamp measurements to help you quickly troubleshoot flame sensors. It also measures resistance, continuity, frequency, and capacitance and provides Min/Max/Average readings with elapsed time to record signal fluctuations.

The Fluke 116 Multimeter and 902 HVAC Clamp Meter are independently tested for safe use in CAT III 600V environments.

Stretch your dollar further, increase your productivity on the job and expand your business by documenting needed repairs with the VT04 Visual IR Thermometer HVAC Combo Kit.

View other VT04 combination kits: [VT04 Visual IR Thermometer Electrical Combo Kit](#) and [VT04 Visual IR Thermometer Maintenance Combo Kit](#).

Specifications: Fluke VT04 visual IR thermometer HVAC combo kit

Fluke VT04 Visual IR Thermometer

| Key Features | |
|--------------------------|---|
| Built-in digital camera | Yes |
| Thermal heat map overlay | Yes, five blending modes |
| Image optics system | PyroBlend® Plus optic *4x sharper image than VT02 |
| Field of view | 28° x 28° |
| Hi-Lo temperature alarms | Yes |

| | |
|--|---|
| Time lapse image capture | Yes |
| Auto-monitor alarm | Yes |
| Baery type | Li-Ion rechargeable |
| Training | No training required |
| Ergonomics | Slim pocket-sized design |
| Hot and cold markers | Yes |
| General Features | |
| Baery life | Eight (8) hours |
| Temperature measurement range | -10°C to +250°C (14°F to 482°F) |
| Temperature measurement accuracy | ±2°C or ±2% |
| Temperature measurement | Yes, centerpoint |
| Storage medium (micro SD card) | Stores up to 10,000 images per Gb (Four (4) Gb card included) |
| Infrared spectral band | 6.5 μm to 14 μm |
| Level and span | Auto |
| Focus mechanism | Focus free, no training required with built-in intelligence |
| Focus options-exclusive user selectable NEAR/FAR options | NEAR < 23 cm (9 in); FAR > 23 cm (9 in) |
| Dimensions | 21 x 7.5 x 5.5 cm (8.3 x 3 x 2.2 in); < 300 g (10.5 oz) |
| File format | .is2 format saved to SD card. User can create professional reports or export images in SmartView® (BMP, DIB, GIF, SPE, FIF, SPEG, JPG, PNG, TIF and TIFF) |
| Safety and compliance | CFR47: 2009 Class A. Part 15 subpart B; CE: EN 61326:2006; IEC/EN 61010-1:2010 |
| Warranty | Two (2) years |

Fluke 902 True RMS HVAC Clamp Meter

| Specifications | | |
|-----------------------|--------------|----------------------------|
| Voltage DC | Range | 0 – 600.0 V |
| | Accuracy | 1% ± 5 counts |
| Voltage AC (True RMS) | Range | 0 – 600.0 V |
| | Accuracy | 1% ± 5 counts (50/60 Hz) |
| Current AC (True RMS) | Range | 0 – 600.0 A |
| | Accuracy | 2.0% ± 5 counts (50/60 Hz) |
| Current DC | Range | 0 - 200.0 μA |
| | Accuracy | 1.0% ± 5 counts |
| Resistance | Range | 0 – 9999 Ω |
| | Accuracy | 1.5% ± 5 counts |

| | | |
|--------------------------|--------------|--|
| Continuity | | □ 30 Ω |
| Temperature ¹ | Range | -10°C to 400°C (-14°F to 752°F) |
| | Accuracy | ±1.0% + 0.8°C (±1.0% + 1.5°F) typical |
| | Range | -40°C to -10°C (-40°F to -14°F) |
| | Accuracy | ±5.0% + 1.5°C (±5.0% + 3.3°F) typical |
| Capacitance | Range | 1-1000 μF |
| | Accuracy | 1.9% ±2 counts |

1. Error does not include Type K Thermocouple errors

Mechanical and General Specifications

| | |
|------------|---|
| Weight | 1.5 lbs (.7 kg) |
| Dimensions | 10.75 x 4.25 x 2.44 in (27.3 x 10.8 x 6.2 cm) |
| Baery type | (2) AA Alkaline Baeries |

Fluke 116 Digital Multimeter

Specifications

| | |
|---|--|
| Maximum voltage between any terminal and earth ground | 600 V |
| Surge protection | 6 kV peak per IEC 61010-1 600 VCAT III, Pollution Degree 2 |
| Display | Digital: 6,000 counts, updates 4 per second |
| Bar graph | 33 segments, updates 32 per second |
| Operating temperature | -10°C to +50°C |
| Storage temperature | -40°C to +60°C |
| Baery type | 9 volt Alkaline, NEDA 1604A/ IEC 6LR61 |
| Baery life | 400 hours typical, without backlight |

Accuracy Specifications

| | | |
|---------------|-------------------------|--|
| DC millivolts | Range/Resolution | 600.0 mV / 0.1 mV |
| | Accuracy | ±([% of reading] + [counts]): 0.5% + 2 |
| DC volts | Range/Resolution | 6.000 V / 0.001 V 60.00 V / 0.01 V 600.00 V / 0.1 V |
| | Accuracy | ±([% of reading] + [counts]): 0.5% + 2 |
| Auto volts | Range/Resolution | 600.0 V / 0.1 V |
| | Accuracy | 2.0% + 3 (DC, 45 Hz to 500 Hz) 4.0% + 3 (500 Hz to 1 kHz) |

| | | |
|-------------------------------------|-------------------------|--|
| AC millivolts ¹ True RMS | Range/Resolution | 600.0 mV / 0.1 mV |
| | Accuracy | 1.0% + 3 (DC, 45 Hz to 500 Hz) 2.0% + 3 (500 Hz to 1 kHz) |
| AC volts ¹ True RMS | Range/Resolution | 6.000 V / 0.001 V 60.00 V / 0.01 V 600.0 V / 0.1 V |
| | Accuracy | 1.0% + 3 (DC, 45 Hz to 500 Hz) 2.0% + 3 (500 Hz to 1 kHz) |
| Continuity | Range/Resolution | 600 Ω / 1 Ω |
| | Accuracy | Beeper on < 20 Ω, off > 250 Ω; detects opens or shorts of 500 μs or longer. |
| Ohms | Range/Resolution | 600.0 Ω / 0.1 Ω 6.000 kΩ / 0.001 kΩ 60.00 kΩ / 0.01 kΩ 600.0 kΩ / 0.1 kΩ 6.000 MΩ / 0.001 MΩ |
| | Accuracy | 0.9% + 1 |
| | Range/Resolution | 40.00 MΩ / 0.01 MΩ |
| | Accuracy | 5% + 2 |
| Diode test | Range/Resolution | 2.00 V / 0.001 V |
| | Accuracy | 0.9% + 2 |
| Capacitance | Range/Resolution | 1000 nF / 1 nF 10.00 μF / 0.01 μF 100.0 μF / 0.1 μF 9999 μF / 1 μF 100 μF to 1000 μF |
| | Accuracy | 1.9% + 2 |
| | Range/Resolution | > 1000 μF |
| | Accuracy | 5% + 20% |
| Lo-Z capacitance | Range | 1 nF to 500 μF |
| | Accuracy | 10% + 2 typical |
| Temperature ² | Range/Resolution | -40°C to 400°C / 0.1°C |
| | Accuracy | 1% + 10 ² |
| | Range/Resolution | -40°F to 752°F / 0.2°F |
| | Accuracy | 1% + 18 ² |
| AC μamps True RMS (45 Hz to 500 Hz) | Range/Resolution | 600.0 μA / 0.1 μA |
| | Accuracy | 1.0% + 2 |
| DC μamps | Range/Resolution | 600.0 μA / 0.1 μA |
| | Accuracy | 1.0% + 2 |

| | | |
|--|--|---|
| Hz (V or A input) ² | Range/Resolution | 99.99 Hz / 0.01 Hz 999.99 Hz / 0.1 Hz 9.999 Hz / 0.001 Hz 50.00 Hz / 0.01 Hz |
| | Accuracy | 0.1% + 2 |
| <p>1. All AC voltage ranges except Auto-V/LoZ are specified from 1% to 100% of range. Auto-V/LoZ is specified from 0.0 V.</p> <p>2. Temperature uncertainty (accuracy) does not include the error of the thermocouple probe.</p> <p>3. Frequency is AC coupled, 5 Hz to 50 kHz for AC voltage. Frequency is DC coupled, 45 Hz to 5 kHz for AC current.</p> <p>4. Temperature Range/Resolution: -40°F to 752°F / 0.2°F.</p> | | |
| Mechanical and General Specifications | | |
| Size | 167 x 84 x 46 mm (6.57 x 3.31 x 1.82 in) | |
| Weight | 550 g | |
| Warranty | 3 years | |

Ordering information



FLK-VT04-H-KIT

Fluke VT04 Visual IR Thermometer HVAC Combo Kit

Includes:

VT04 Visual IR Thermometer includes:

- Hard case*
- Micro-SD card
- Micro-SD conversion adapter to standard
- Li-Ion rechargeable battery
- Printed Quick Start guides (English, French, German, Spanish, Simplified Chinese)

Available for free download*:

- SmartView® analysis and reporting software »
- Manual »
- Quick Start guide »

*To lower pricing on the VT04, future inventory no longer includes the lanyard, the SmartView® software CD, and the Manual CD.

902 HVAC Clamp Meter includes:

- AA Alkaline batteries (2)
- Users manual w/safety information
- Soft carrying case
- TL75 Test Leads (1 pair)
- 80BK Integrated DMM Temperature Probe (1)

116 Digital Multimeter includes:

- 4 mm silicone test lead set
- 80BK Integrated Temperature probe
- Holster

- Installed 9 V battery
 - User manual
-



Fluke. *Keeping your world up and running.®*

Fluke Corporation
PO Box 9090, Everett, WA 98206 U.S.A.

For more information call:
In the U.S.A. (800) 443-5853
In Canada (800) 36-FLUKE
From other countries +1 (425) 446-5500
www.fluke.com

©2025 Fluke Corporation.
Specifications subject to change without notice.
04/2025

**Modification of this document is not permitted
without written permission from Fluke
Corporation.**