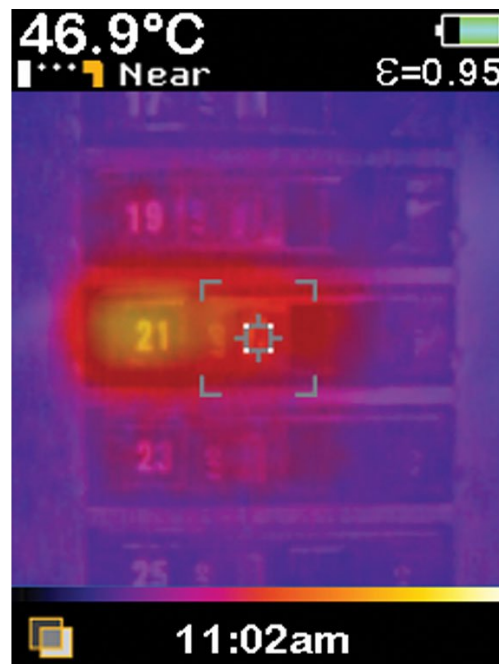


## TECHNICAL DATA

# Fluke VT04 visual IR thermometer electrical combo kit







## Key features

### VT04 Visual IR Thermometer features:

- **Unlimited applications** – See [data sheet](#) for powerful applications and details
- **Built-in digital camera** – Every Fluke Visual IR Thermometer has a built-in digital camera
- **Exclusive thermal heat map blending overlay** – With one button, blend digital images and thermal heat maps to instantly show the exact location of the issue
- **No training required** - Fully automatic with built-in intelligence
- **True pocket size design** – Less than half the size of an average infrared camera
- **SmartView® reporting software** – Store up to 10,000 images per Gb on included SD card and make professional reports on included professional software
- **Automatic hot and cold spot trackers**
- **Breakthrough affordability** – Fraction of the cost of infrared cameras that require costly training and software
- **Powerful resolution with PyroBlend® Plus optics:**
  - Best-in-class field of view: 28 ° x 28 ° (40% wider for tight spaces)
  - 4 times sharper images
- **Alarm and time lapse features**
  - **Hi/Lo temperature alarm** – Find hot spots in seconds with the alarm feature
  - **Time lapse image capture** – Automatically monitor equipment over time
  - **Automated monitoring alarm** – Automatically capture images after an alarm has been triggered

### 376 True RMS AC/DC Clamp Meter with iFlex features:

- iFlex flexible current probe expands the measurement range to 2500 A AC
- CAT IV 600 V, CAT III 1000 V
- True-rms ac voltage and current for accurate measurements on non-linear signals
- Min, max, average and inrush recording to capture variations automatically
- Integrated low pass filter and state of the art signal processing allows for use in noisy electrical environments while providing stable readings
- Proprietary inrush measurement technology to filter out noise and capture motor starting current exactly as the circuit protection sees it
- Ergonomic design fits in your hand and can be used while wearing protective equipment
- Large, easy to read backlight display automatically sets the correct measurement range so you do not need to change the switch positions while taking a measurement
- Soft carrying case

### **117 Digital Multimeter features:**

- VoltAlert™ technology for non-contact voltage detection
- AutoVolt automatic AC/DC voltage selection
- Low input impedance: helps prevent false readings due to ghost voltage
- Large white LED backlight to work in poorly lit areas
- True-rms for accurate measurements on non-linear loads
- Measures 10 A (20 A overload for 30-seconds)
- Resistance, continuity, frequency and capacitance
- Min/Max/Average with elapsed time to record signal fluctuations
- Compact ergonomic design for one-handed operation
- Compatible with optional magnetic hanger (ToolPak™) for hands free operation
- CAT III 600 V safety rated

## **Product overview: Fluke VT04 visual IR thermometer electrical combo kit**

Optimized for the world you work in, the VT04 Visual IR Thermometer Electrical Combo Kit includes:

- VT04 Visual IR Thermometer
- 376 Clamp Meter
- 117 Digital Multimeter

This kit is ideal for electrical professionals and:

- stretches your tool budget further
- is optimized to meet the demands of troubleshooting electrical systems at breakthrough affordability
- adds infrared detection services to expand your business

The VT04 Visual IR Thermometer provides a built in digital camera with a thermal heat map overlay to detect hot and cold spots instantly. The VT04 eliminates the tedious task of recording multiple measurements manually.

### **See the Difference**

Hot and cold spot trackers and temperature alarms help you measure with confidence knowing that you did not miss a hot or cold spot. In addition, the VT04:

- Requires no training
- Is designed to fit in your pocket
- Uncovers hidden issues instantly
- Documents needed repairs with a push of the button
- Includes professional [SmartView®](#) reporting software to communicate needed repairs

[Download 15 Powerful Applications for the Fluke Visual IR Thermometer](#)

The **Fluke 117 Digital Multimeter** offers accurate and reliable performance with a rugged design. The compact 117 True RMS digital multimeter is optimized to help you keep mission critical infrastructure up and running. The 117 Digital Multimeter:

- Delivers true-rms ac voltage and current readings with 6000-count resolution
- Min/Max/Average readings
- Frequency and capacitance
- Battery door is easy to access, so you and your Fluke 117 can stay on the job

The **Fluke 376 Clamp Meter** offers optimal performance even in tight spaces with the iFlex flexible current probe which expands the measurement range to 2500 A AC. It also provides increased display flexibility, ability to measure around awkward sized conductors and improved wire access. Adapt to a wide range of current measurement situations. With true-rms voltage and current measurements, the Fluke 376 can read up to 1000 V and 1000 A in both AC and DC modes.

The Fluke 117 multimeter and 376 Clamp Meter are independently tested for safe use in CAT III 600V environments.

Stretch your dollar further, increase your productivity on the job and expand your business by documenting needed repairs with the VT04 Visual IR Thermometer Electrical Combo Kit.

View other VT04 combination kits: [VT04 Visual IR Thermometer HVAC Combo Kit](#) and the [VT04 Visual IR Thermometer Maintenance Combo Kit](#).

## Specifications: Fluke VT04 visual IR thermometer electrical combo kit

### Fluke VT04 Visual IR Thermometer

Key Features	
Built-in digital camera	Yes
Thermal heat map overlay	Yes, five blending modes
Image optics system	PyroBlend® Plus optic *4x sharper image than VT02
Field of view	28° x 28°
Hi-Lo temperature alarms	Yes
Time lapse image capture	Yes
Auto-monitor alarm	Yes
Battery type	Li-Ion rechargeable

Training	No training required
Ergonomics	Slim pocket-sized design
Hot and cold markers	Yes
<b>General Features</b>	
Baery life	Eight (8) hours
Temperature measurement range	-10°C to +250°C (14°F to 482°F)
Temperature measurement accuracy	±2°C or ±2%
Temperature measurement	Yes, centerpoint
Storage medium (micro SD card)	Stores up to 10,000 images per Gb (Four (4) Gb card included)
Infrared spectral band	6.5 µm to 14 µm
Level and span	Auto
Focus mechanism	Focus free, no training required with built-in intelligence
Focus options-exclusive user selectable NEAR/FAR options	NEAR < 23 cm (9 in) FAR > 23 cm (9 in)
Dimensions	21 x 7.5 x 5.5 cm (8.3 x 3 x 2.2 in); < 300 g (10.5 oz)
File format	.is2 format saved to SD card. User can create professional reports or export images in SmartView (BMP, DIB, GIF, SPE, FIF, SPEG, JPG, PNG, TIF and TIFF)
Safety and compliance	CFR47: 2009 Class A. Part 15 subpart B; CE: EN 61326:2006; IEC/EN 61010-1:2010
Warranty	Two (2) years

## Fluke 376 Clamp Meter

<b>Specifications</b>	
Diameter of measurable conductor	01.3 or 34 mm max
Operating temperature	-14 to 122°F (-10 to 50°C)
Storage temperature	-40 to 140°F (-40 to 60°C)
Operating humidity	< 90% @ 10 to 30°C, < 75% @ 30 to 40°C
Operating altitude	0 to 3000 m
Size	246 x 83 x 43 mm (9.685 x 3.267 x 1.692 in)
Weight	388 g (14 oz)
Temperature coefficient	0.01%°C (< 18°C or > 28°C)
Warranty	Three years for electronics One year for cable and clamp assembly

## Fluke 117 Digital Multimeter

### Specifications

Maximum voltage between any terminal and earth ground	600 V
Surge protection	6 kV peak per IEC 61010-1 600 VCAT III, Pollution Degree 2
Fuse for A input	11 A, 1000 V FAST Fuse (Fluke PN 803293)
Display	Digital: 6,000 counts, updates 4 per second
Bar graph	33 segments, updates 32 per second
Operating temperature	-10°C to +50°C
Storage temperature	-40°C to +60°C
Baery type	9 volt Alkaline, NEDA 1604A/ IEC 6LR61
Baery life	400 hours typical, without backlight

### Accuracy Specifications

DC millivolts	<b>Range/Resolution</b>	600.0 mV / 0.1 mV
	Accuracy	±[% of reading] + [counts]: 0.5% + 2
DC volts	<b>Range/Resolution</b>	6.000 V / 0.001 V 60.00 V / 0.01 V 600.00 V / 0.1 V
	Accuracy	±[% of reading] + [counts]: 0.5% + 2
Auto volts	<b>Range/Resolution</b>	600.0 V / 0.1 V
	Accuracy	2.0% + 3 (DC, 45 Hz to 500 Hz) 4.0% + 3 (500 Hz to 1 kHz)
AC millivolts <sup>1</sup> true-rms	<b>Range/Resolution</b>	600.0 mV / 0.1 mV
	Accuracy	1.0% + 3 (DC, 45 Hz to 500 Hz) 2.0% + 3 (500 Hz to 1 kHz)
AC volts <sup>1</sup> true-rms	<b>Range/Resolution</b>	6.000 V / 0.001 V 60.00 V / 0.01 V 600.0 V / 0.1 V
	Accuracy	1.0% + 3 (DC, 45 Hz to 500 Hz) 2.0% + 3 (500 Hz to 1 kHz)
Continuity	<b>Range/Resolution</b>	600 Ω / 1 Ω
	Accuracy	Beeper on < 20 Ω, off > 250 Ω; detects opens or shorts of 500 μs or longer.
Ohms	<b>Range/Resolution</b>	600.0 Ω / 0.1 Ω 6.000 kΩ / 0.001 kΩ 60.00 kΩ / 0.01 kΩ 600.0 kΩ / 0.1 kΩ 6.000 MΩ / 0.001 MΩ
	Accuracy	0.9% + 1
	Range/Resolution	40.00 MΩ / 0.01 MΩ
	Accuracy	5% + 2

Diode test	<b>Range/Resolution</b>	2.00 V / 0.001 V
	Accuracy	0.9% + 2
Capacitance	<b>Range/Resolution</b>	1000 nF / 1 nF 10.00 $\mu$ F / 0.01 $\mu$ F 100.0 $\mu$ F / 0.1 $\mu$ F 9999 $\mu$ F / 1 $\mu$ F 100 $\mu$ F to 1000 $\mu$ F
	Accuracy	1.9% + 2
	<b>Range/Resolution</b>	> 1000 $\mu$ F
	Accuracy	5% + 20%
Lo-Z capacitance	<b>Range</b>	1 nF to 500 $\mu$ F
	Accuracy	10% + 2 typical
AC amps True RMS (45 Hz to 500 Hz)	<b>Range/Resolution</b>	6.000 A / 0.1 A 10.00 A / 0.01 A
	Accuracy	1.5% + 3 20 A continuous overload for 30 seconds max
DC amps	<b>Range/Resolution</b>	6.000 A / 0.1 A 10.00 A / 0.01 A
	Accuracy	1.0% + 3 20 A continuous overload for 30 seconds max
Hz (V or A input) <sup>2</sup>	<b>Range/Resolution</b>	99.99 Hz / 0.01 Hz 999.99 Hz / 0.1 Hz 9.999 Hz / 0.001 Hz 50.00 Hz / 0.01 Hz
	Accuracy	0.1% + 2
<p>1. All AC voltage ranges except Auto-V/LoZ are specified from 1% to 100% of range. Auto-V/LoZ is specified from 0.0 V.</p> <p>2. Temperature uncertainty (accuracy) does not include the error of the thermocouple probe.</p> <p>3. Frequency is AC coupled, 5 Hz to 50 kHz for AC voltage. Frequency is DC coupled, 45 Hz to 5 kHz for AC current.</p> <p>4. Temperature Range/Resolution: -40°F to 752°F / 0.2°F.</p>		
<b>Mechanical and General Specifications</b>		
Size	167 x 84 x 46 mm (6.57 x 3.31 x 1.82 in)	
Weight	550 g	
Warranty	3 years	



## Ordering information



### **FLK-VT04-E-KIT**

Fluke VT04 Visual IR Thermometer Electrical Combo Kit

Includes:

VT04 Visual IR Thermometer includes:

- Hard case\*
- Micro-SD card
- Micro-SD conversion adapter to standard
- Li-Ion rechargeable battery
- Printed Quick Start guides (English, French, German, Spanish, Simplified Chinese)

Available for free download\*:

- SmartView® analysis and reporting software »
- Manual »
- Quick Start guide »

\*To lower pricing on the VT04, future inventory no longer includes the lanyard, the SmartView® software CD, and the Manual CD.

376 Clamp Meter - True-rms AC/DC Clamp Meter with iFlex™ includes:

- 18-inch iFlex™ flexible current probe
- Coated instruction card
- Safety information sheet
- Soft carrying case
- TL75 test leads
- Two AA Alkaline batteries

117 Digital Multimeter - The Electrician's Multimeter with Non-Contact Voltage includes:

- 4 mm silicone test lead set
  - Holster
  - User manual
-



**Fluke.** *Keeping your world up and running.®*

**Fluke Corporation**  
PO Box 9090, Everett, WA 98206 U.S.A.

**For more information call:**  
In the U.S.A. (800) 443-5853  
In Canada (800) 36-FLUKE  
From other countries +1 (425) 446-5500  
[www.fluke.com](http://www.fluke.com)

©2025 Fluke Corporation.  
Specifications subject to change without notice.  
04/2025

**Modification of this document is not permitted  
without written permission from Fluke  
Corporation.**