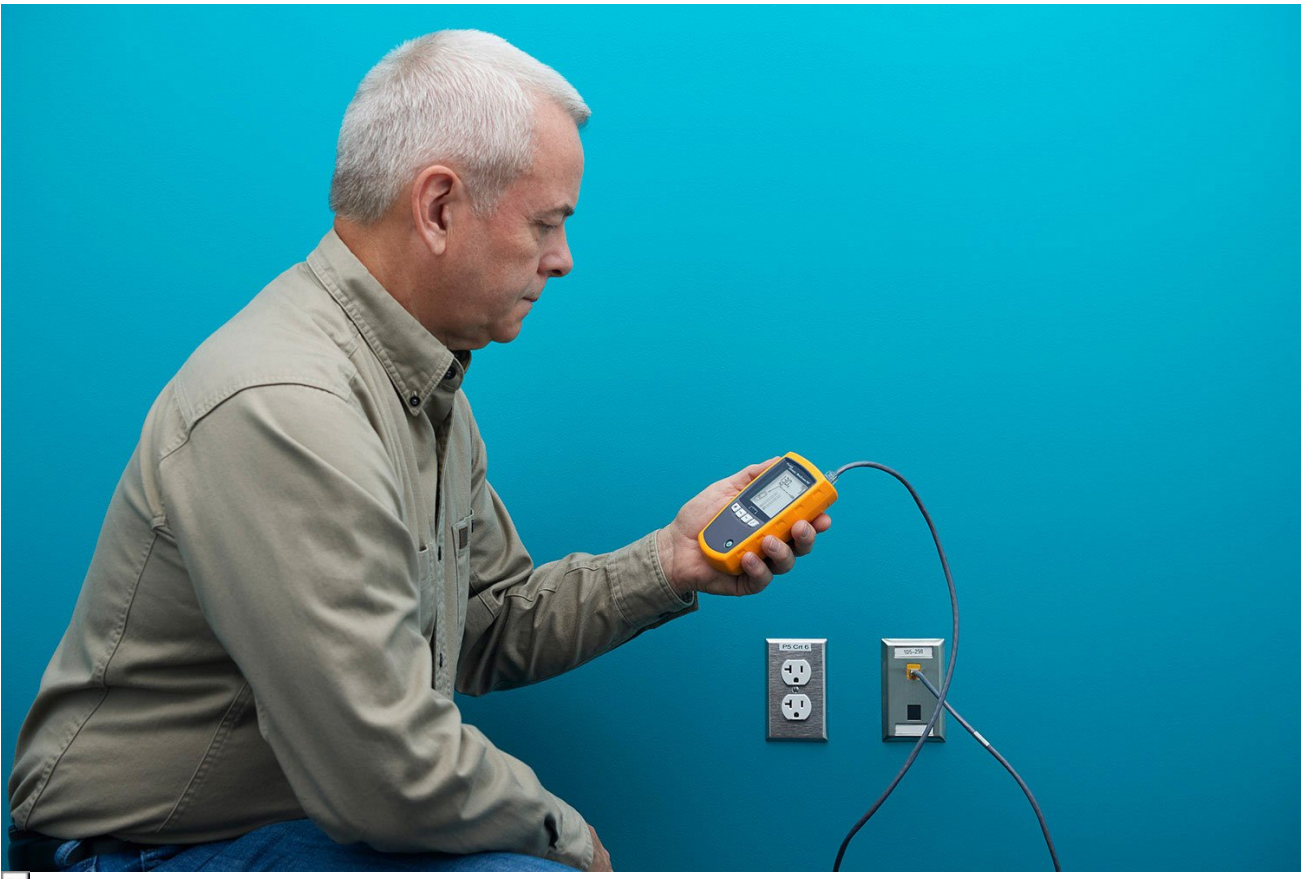


TECHNICAL DATA

Fluke Networks MicroScanner™ Cable / PoE Tester







Key features

- Report PoE class (0-8)
- Display network switch speeds capabilities up to 10G
- Ethernet Alliance Certified to IEEE-802.3™ standards
- Display cable length, wiremap and distance to fault
- Locate and trace cable with toning (probe sold separately)

Product overview: Fluke Networks MicroScanner™ Cable / PoE Tester

MicroScanner™ PoE cuts through the confusion of your PoE installation by providing swift and simple PoE verification.

The tester detects the available PoE class (0-8) in accordance to the latest PoE standards and displays the voltage from passive PoE sources. Everything cable technicians need to know, including available services (up to 10G Ethernet), cable length, wiremap, cable ID, and distance to fault are all shown on the LCD screen.

Built-in IntelliTone digital and analog toning precisely locates virtually any cable or wire pair – even on active networks.

The ergonomic design features sleek rubber overmold to enhance grip and ruggedness.

Includes MicroScanner™ POE (Power over Ethernet) cable verifier with detachable wiremap adapter, getting started guide (10 languages), 2 AA alkaline batteries, carry pouch, and one year warranty.

Specifications: Fluke Networks MicroScanner™ Cable / PoE Tester

Specifications apply at 23 °C (73 °F), unless otherwise noted.

Environmental specifications	
Operating temperature	32 °F to 113 °F (0 °C to 45 °C)
Storage temperature	-4 °F to +140 °F (-20 °C to +60 °C)
Operating relative humidity (% RH without condensation)	90 % (50 °F to 95 °F 10 °C to 35 °C) 75 % (95 °F to 113 °F 35 °C to 45 °C)
Shock and Vibration	Random, 2 g, 5 Hz-500 Hz (Class 2) 1 m drop test with and without wiremap adapter aached
Safety	IEC 61010-1 3rd Edition
Altitude	4,000 m; Storage: 12,000 m
EMC	IEC 61326-1
General specifications	
Test connectors	Shielded 8-pin modular jack accepts 8-pin modular (RJ45) and 4-pin modular (RJ11) plugs.
Power	Baery type: 2 AA (NEDA 15A, IEC LR6) alkaline baeries Baery life: 20 hours of typical use Other compatible baery types: 2 AA photo lithium, NIMH, NICAD
Dimensions and weight (with baeries installed and wiremap adapter aached)	3 in x 6.4in x 1.4 in (7.6 cm x 16.3 cm x 3.6 cm) MicroScanner™ PoE: 10.6 oz (300 g)
Display	Monochrome LCD with backlight
Test modes	
Cable test	Measures length, verifies wiremap, identifies remote ID locators, and detects Etheet ports. MicroScanner™ PoE also shows HIGH Ω when the resistance of the cable is more than 12.5 Ω . Displays results on one screen.
Tone	Generates IntelliTone™ and normal analog toning signals
PoE	MicroScanner™ PoE: Solicits and detects the presence of 802.3af, at, bt, and UPOE (Cisco's Universal Power over Etheet) compatible PoE devices
Performance specifications	
Cable types tested	Twisted pair: UTP, FTP, SSTP
Length test	Range: 460 m (1500 ft) Resolution: 0.3 m (1 ft) Typical accuracy: \pm 4% or 0.6 m (2 ft) whichever is greater. NVP uncertainty is an additional error. Calibration: User-seable NVP for twisted pair. Can determine actual NVP with known length of cable.
Wiremap test	Detects single-wire faults, shorts, miswires, split pairs, and up to seven far-end adapter IDs. The wiremap is drawn with proportional length to visually indicate the approximate location of faults.
Etheet port detection	MicroScanner™ PoE: Detects the advertised speed of 802.3 Etheet ports with speeds of 10 Mbps, 100 Mbps, 1 Gbps, 2.5 Gbps, 5 Gbps, and 10 Gbps.



Tone generator	Supports toning and cable mapping with a Fluke Networks digital IntelliTone™ probe. Generates four tones compatible with typical analog probes. SmartTone™ feature gives positive identification of cables in bundles when using an IntelliTone or an analog probe.
----------------	---

Ordering information



MS-POE

MS-POE Cable Verifier

Includes:

- MicroScanner™ POE (Power over Ethernet) cable verifier with detachable wiremap adapter
- Getting started guide (10 languages)
- 2 AA alkaline batteries
- Carry pouch
- One year warranty

Optional accessories

Description

Fluke Networks Industrial Connector Adapter Kit [Fluke Networks Industrial Connector Adapter Kit](#)



Fluke. *Keeping your world up and running.®*

Fluke Corporation
PO Box 9090, Everett, WA 98206 U.S.A.

For more information call:
In the U.S.A. (800) 443-5853
In Canada (800) 36-FLUKE
From other countries +1 (425) 446-5500
www.fluke.com

©2025 Fluke Corporation.
Specifications subject to change without notice.
03/2025

**Modification of this document is not permitted
without written permission from Fluke
Corporation.**