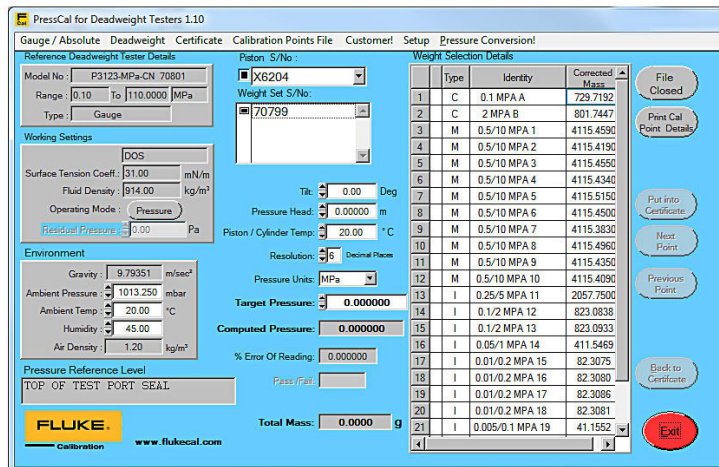


TECHNICAL DATA

# PressCal Software



## Key features

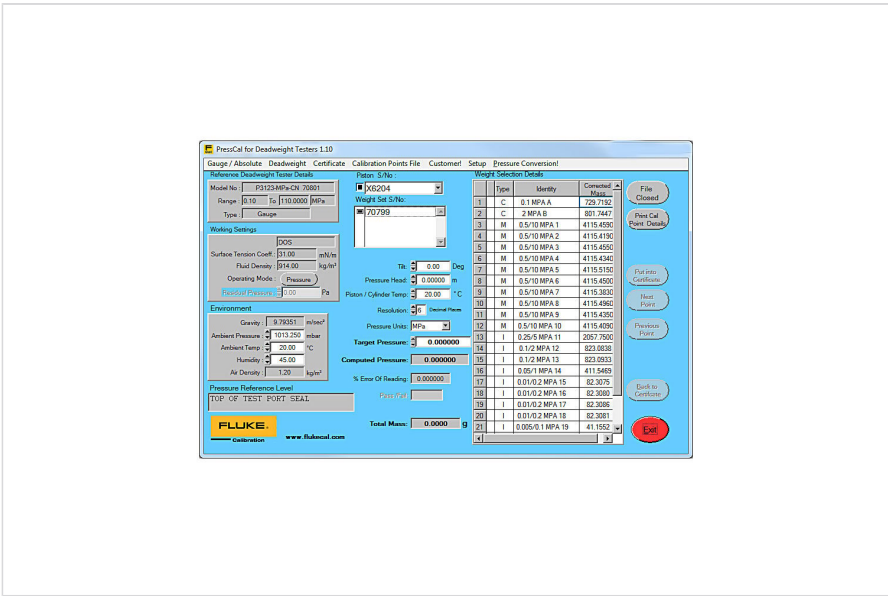
- Menu-driven software for pressure calculation and certificate generation using a deadweight tester.
- Developed for flexibility, speed, ease, and accuracy in calibrations.
- Apply all necessary corrections (e.g., local gravity, pressure head, temperature) to enhance the tester's performance.
- Store calibration details and/or automatically inserts them into a calibration certificate.

## Product overview: PressCal Software

PressCal is a menu driven software program for pressure calculation and certificate generation using a deadweight tester as the pressure source. This software has been developed as a flexible working tool to make calibrations quicker, easier and more accurate. PressCal allows users to apply all necessary corrections (local gravity, pressure head, temperature, etc.) to enhance the performance of the deadweight tester. Calibration details are then stored and/or automatically inserted into a calibration certificate.

- Menu-driven, easy-to-use software
- Maintain multiple deadweight tester files
- Pressure equivalent calculations with all corrections applied
- Automatic generation of calibration certificates
- Pre-loaded calibration data
- Twelve pressure units
- Windows 95 or higher running on a 486 PC (minimum)

# Ordering information



## PressCal Software

Pressure Calibration Software



**Fluke.** *Keeping your world up and running.®*

**Fluke Corporation**  
PO Box 9090, Everett, WA 98206 U.S.A.

**For more information call:**  
In the U.S.A. (800) 443-5853  
In Canada (800) 36-FLUKE  
From other countries +1 (425) 446-5500  
[www.fluke.com](http://www.fluke.com)

©2025 Fluke Corporation.  
Specifications subject to change without notice.  
04/2025

**Modification of this document is not permitted without written permission from Fluke Corporation.**