

Database Migration Assistance



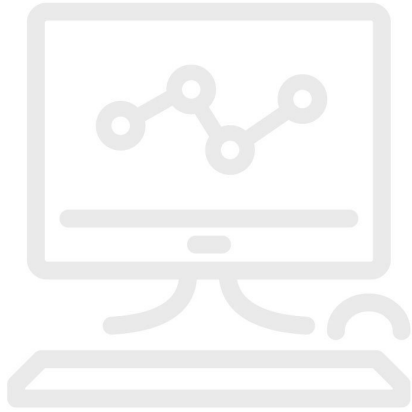
Product overview: Database Migration Assistance

Automated calibration installations are becoming more complex. Often it is a daunting challenge for the cal lab manager to get the hardware and software operating as expected. Fluke can help you migrate calibration data from your old database to a new MET/CAL® Plus database. Here is how this service works:

- You ship your “legacy” data, as a text file in delimited format, to the Fluke MET/SUPPORT product support group.
- You tell us what fields are represented in the legacy data so we know how to correlate them into MET/BASE.
- We will perform the data transfer and send you a populated MET/BASE file.

Database migrations do not, by nature, leave you with a perfect copy of the old data in the new database. Some data may be lost due to improper data entry methods or poor database structure/integrity.

Ordering information



MS-MIGRATE

Database Migration Assistance



Fluke. *Keeping your world up and running.®*

Fluke Corporation
PO Box 9090, Everett, WA 98206 U.S.A.

For more information call:
In the U.S.A. (800) 443-5853
In Canada (800) 36-FLUKE
From other countries +1 (425) 446-5500
www.fluke.com

©2025 Fluke Corporation.
Specifications subject to change without notice.
03/2025

**Modification of this document is not permitted
without written permission from Fluke
Corporation.**