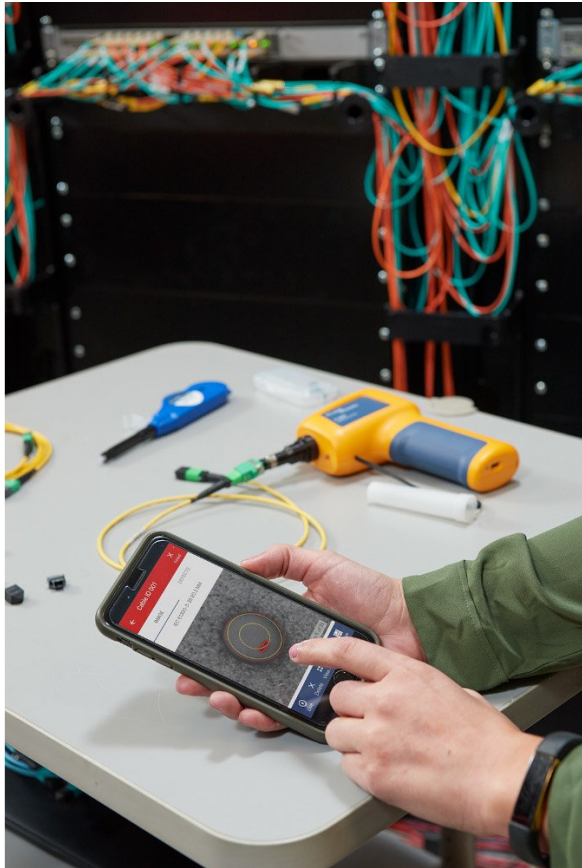


TECHNICAL DATA

Fluke Networks FI-3000 FiberInspector™ Pro Inspection Camera







Key features

- MPO and single strand fiber inspection camera with instant Live View
- Kit includes FI-3000 FiberInspector Ultra camera, tip set, adapter, holster and case
- Autofocus/Auto centering multi-camera design and automated pass/fail
- Total MPO visibility with Live View from full trunk to individual end face
- For single strand and 1 or 2 rows of 8/12/16 UPC or APC connectors

Product overview: Fluke Networks FI-3000 FiberInspector™ Pro Inspection Camera

The FI-3000 FiberInspector™ Pro makes inspecting MPO and single fiber optic cables easy and efficient. Instant, real-time image with simple touchscreen gestures to view the full connector down to individual end faces. Automated pass/fail results are available in seconds. Store results on your phone and share with the mobile app. Versiv owners can also use Link Ware software. Compact, ergonomic design with autofocus makes it comfortable and fast.

Specifications: Fluke Networks FI-3000 FiberInspector™ Pro Inspection Camera

Specifications	
Temperature range	Operating: -10 °C to +45 °C (+14 °F to +113 °F) Storage: -10 °C to +60 °C (+14 °F to +140 °F)
Humidity range	Operating: 0 % to 95 % (32 °F to 95 °F, 0 °C to 35 °C) RH non-condensing Storage: 0 % to 95 % (95 °F to 113 °F, 35 °C to 45 °C) RH non-condensing
Altitude	Operating: 4,000 m (3,200 m with AC adapter) Storage: 12,000 m
Vibration	2 g, 5 Hz to 500 Hz
Shock	1 meter drop test
Safety	IEC 61010-1: Pollution Degree 2
EMC	IEC 61326-1: Cooled Electromagnetic Environment; IEC 61326-2-1 CISPR 11: Group 2, Class A USA (FCC): 47 CFR 15 Intentional Radiators: This device complies with part 15 of the FCC rules.
Endtype support	Single fiber and MPO: 1x8 (8 fibers), 1x12 (8, 10, or 12 fibers), 1x16 (16 fibers), 2x12 (16, 20, or 24 fibers), 2x16 (32 fibers)
Test limits	IEC 61300-3-35 ED. 2 MM IEC 61300-3-35 ED. 2 SM APC Document only
Optional automated pass/fail test time	Less than 2 seconds per fiber
Camera type	5 Megapixel 1/4-inch CMOS sensor

Field of view	610 μm x 460 μm
Resolution	1 μm
Light source	LED, >100,000 hr life
Endface illumination	Coaxial blue LED
Resolution	White LED
Baery type	Lithium-ion; 10.8 hour life
Power adapter	Input: 100 to 240 VAC \pm 10%, 50/60Hz Output: 15 VDC, 2 A maximum Class II
Wireless transmission*	Output power: <100 mW Frequency ranges: 2.4 GHz (2412 MHz to 2462 MHz)
Dimensions	6.625 x 5.375 x 2.125 in (168 x 137 x 54 mm) (with no dust cap or adapter tip) Length with dust cap: 7.5 in (191 mm)
Weight	11.5 oz (326 gm) (with dust cap and no adapter tip)

Ordering information



FI-3000

Fluke Networks FI-3000 FiberInspector™ Pro Inspection Camera

Includes:

- FI-3000 FiberInspector™ Ultra camera
- Tip set (12/24 UPC and 12/24 APC)
- Single fiber adapter for FI-1000 tips
- AC charger
- Getting started guide
- Holster
- Soft carrying case



Fluke. *Keeping your world up and running.®*

Fluke Corporation
PO Box 9090, Everett, WA 98206 U.S.A.

Fluke Australia
Unit 26, 7 Anella Ave
Castle Hill, NSW 2154 Australia
Phone: 61 2 8850-3333
www.fluke.com.au

©2025 Fluke Corporation. All rights reserved.
Specifications subject to change without notice.
03/2025

**Modification of this document is not permitted
without written permission from Fluke
Corporation.**