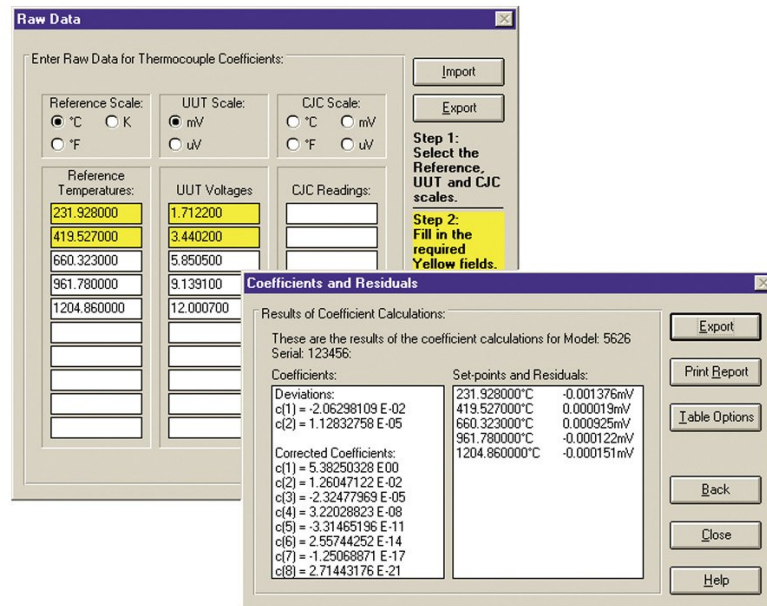


TECHNICAL DATA

9933 TableWare v3 - Temperature Calibration Software



Key features

- Uses manually entered data for calculations provided by MET/TEMP II.
- Compatible with Windows 7, 8, and 10 operating systems.

Product overview: 9933 TableWare v3 - Temperature Calibration Software

TableWare calculates coefficients for RTDs, thermistors and thermocouples. It uses ITS-90, IPTS-68, Callendar-Van Dusen and polynomial equations. TableWare also generates temperature vs. resistance, temperature vs. ratio and temperature vs. EMF tables.

Simply enter or import the raw resistance or voltage data from your calibrations. TableWare generates coefficients, calculates residual values and generates useful tables.

Tables and coefficients can be exported to a text file for analysis in other software packages.

Also, TableWare allows you to generate tables from coefficients that can be entered manually. No raw data is required!

TableWare v3.0 is compatible with Microsoft Windows 7, 8, and 10 operating systems.

Ordering information

The screenshot displays two windows from the 9933 TableWare software. The 'Raw Data' window is titled 'Enter Raw Data for Thermocouple Coefficients' and contains three columns of input fields: 'Reference Temperatures', 'UUT Voltages', and 'CJC Readings'. The 'Reference Temperatures' column has values 231.928000, 419.527000, 660.323000, 961.780000, and 1204.860000. The 'UUT Voltages' column has values 1.712200, 3.440200, 5.850500, 9.139100, and 12.000700. The 'CJC Readings' column is empty. The 'Coefficients and Residuals' window shows the results of coefficient calculations for Model 5626, Serial 123456. It includes sections for 'Coefficients', 'Set-points and Residuals', and 'Corrected Coefficients'.

Raw Data Window:

Reference Scale	UUT Scale	CJC Scale
<input checked="" type="radio"/> °C	<input checked="" type="radio"/> mV	<input checked="" type="radio"/> °C
<input type="radio"/> °F	<input type="radio"/> uV	<input type="radio"/> °F

Step 1: Select the Reference, UUT and CJC scales.

Step 2: Fill in the required Yellow fields.

Coefficients and Residuals Window:

Results of Coefficient Calculations:

These are the results of the coefficient calculations for Model 5626 Serial 123456:

Coefficients:

Deviations:

- c[1] = 2.06239109 E-02
- c[2] = 1.12832759 E-05

Set-points and Residuals:

Set-point	Residual
231.928000°C	-0.001376mV
419.527000°C	0.000013mV
660.323000°C	0.000925mV
961.780000°C	-0.000122mV
1204.860000°C	-0.000151mV

Corrected Coefficients:

- c[1] = 5.38250328 E-00
- c[2] = 1.26047122 E-02
- c[3] = 2.35077363 E-05
- c[4] = 3.22028823 E-08
- c[5] = 3.31485196 E-11
- c[6] = 2.55744252 E-14
- c[7] = -1.25068871 E-17
- c[8] = 2.71443176 E-21

9933-V3

TableWare Coefficient Calculation and Table Generation SoftWare

Fluke. *Keeping your world up and running.®*

Fluke Corporation
PO Box 9090, Everett, WA 98206 U.S.A.

Fluke Australia
Unit 26, 7 Anella Ave
Castle Hill, NSW 2154 Australia
Phone: 61 2 8850-3333
www.fluke.com.au

©2025 Fluke Corporation. All rights reserved.
Specifications subject to change without notice.
04/2025

**Modification of this document is not permitted
without written permission from Fluke
Corporation.**