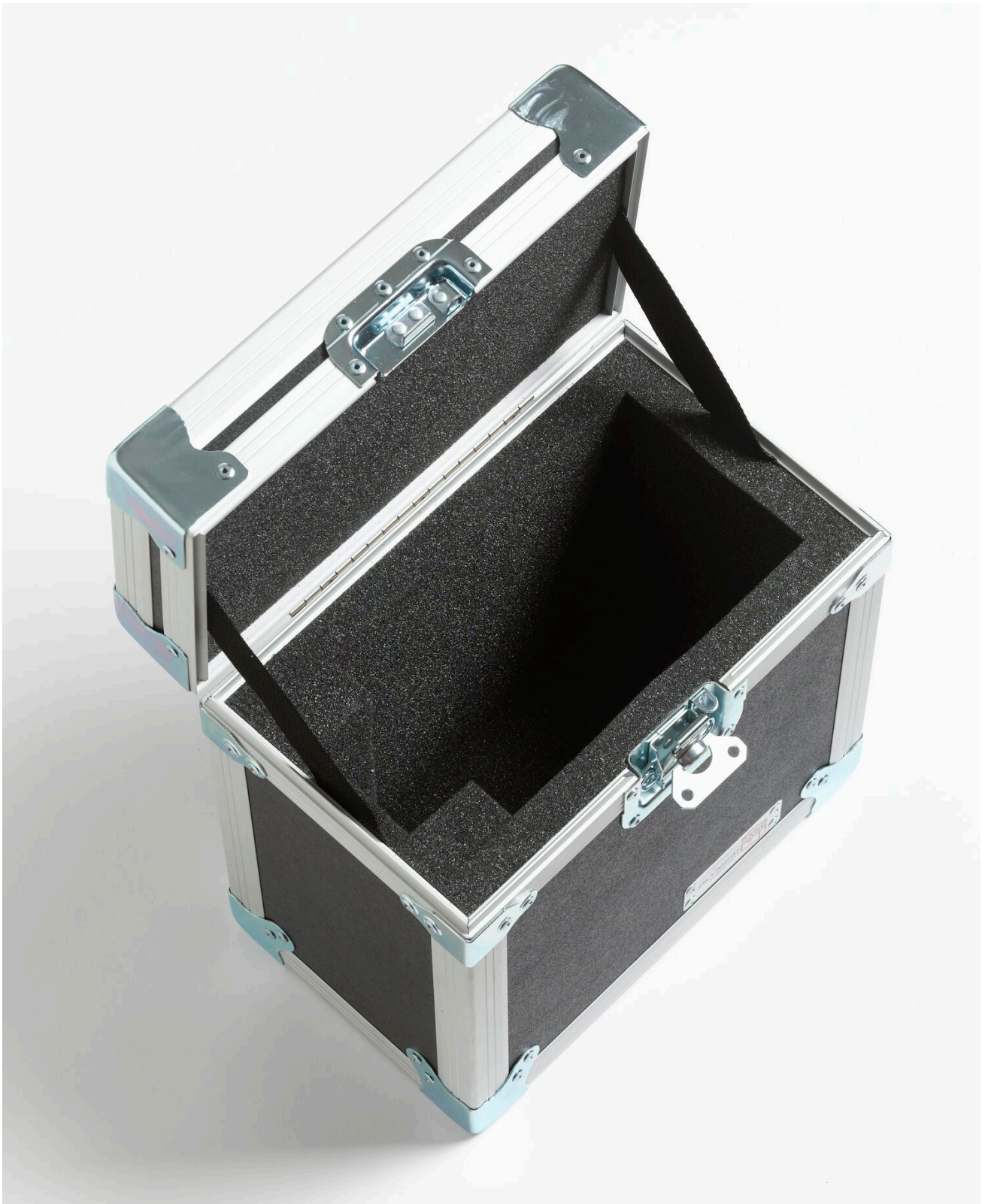


TECHNICAL DATA

# 9316 | Rugged Carrying Case : 9103





## **Product overview: 9316 | Rugged Carrying Case : 9103**

- Rugged carrying case for the 9103 Dry-Well Calibrator
- Laminated birch or lightweight composite panels

- Recessed steel handles and latches
- Foam lined for impact protection



## Ordering information



### **9316**

Rugged Carrying Case : 9103

---



**Fluke.** *Keeping your world up and running.®*

**Fluke Corporation**  
PO Box 9090, Everett, WA 98206 U.S.A.

**Fluke Australia**  
Unit 26, 7 Anella Ave  
Castle Hill, NSW 2154 Australia  
Phone: 61 2 8850-3333  
[www.fluke.com.au](http://www.fluke.com.au)

©2025 Fluke Corporation. All rights reserved.  
Specifications subject to change without notice.  
03/2025

**Modification of this document is not permitted  
without written permission from Fluke  
Corporation.**