

Tekniske data

## Database Migration Assistance



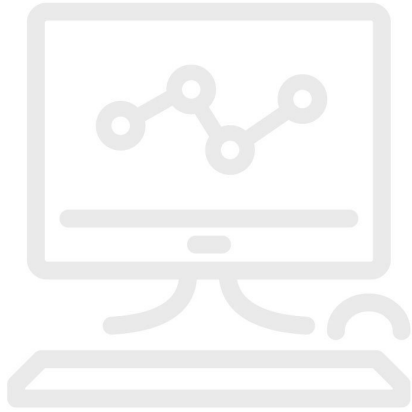
### Produktoversigt: Database Migration Assistance

Automated calibration installations are becoming more complex. Often it is a daunting challenge for the cal lab manager to get the hardware and software operating as expected. Fluke can help you migrate calibration data from your old database to a new MET/CAL® Plus database. Here is how this service works:

- You ship your “legacy” data, as a text file in delimited format, to the Fluke MET/SUPPORT product support group.
- You tell us what fields are represented in the legacy data so we know how to correlate them into MET/BASE.
- We will perform the data transfer and send you a populated MET/BASE file.

Database migrations do not, by nature, leave you with a perfect copy of the old data in the new database. Some data may be lost due to improper data entry methods or poor database structure/integrity.

## Modeller



### **MS-MIGRATE**

Database Migration Assistance

---

**Fluke.** *Keeping your world up and running.®*

**Fluke Danmark A/S**  
c/o Radiometer Medical ApS  
Åkandevvej 21  
2700 Brønshøj  
Danmark  
Tlf.: 70 23 58 53  
E-mail: cs.dk@fluke.com  
www.fluke.dk

©2025 Fluke Corporation. Alle rettigheder  
forbeholdes.  
Oplysningerne kan ændres uden forudgående  
varsel.  
03/2025

**Ændringer i dette dokument er ikke tilladt uden  
skriftlig tilladelse fra Fluke Corporation.**